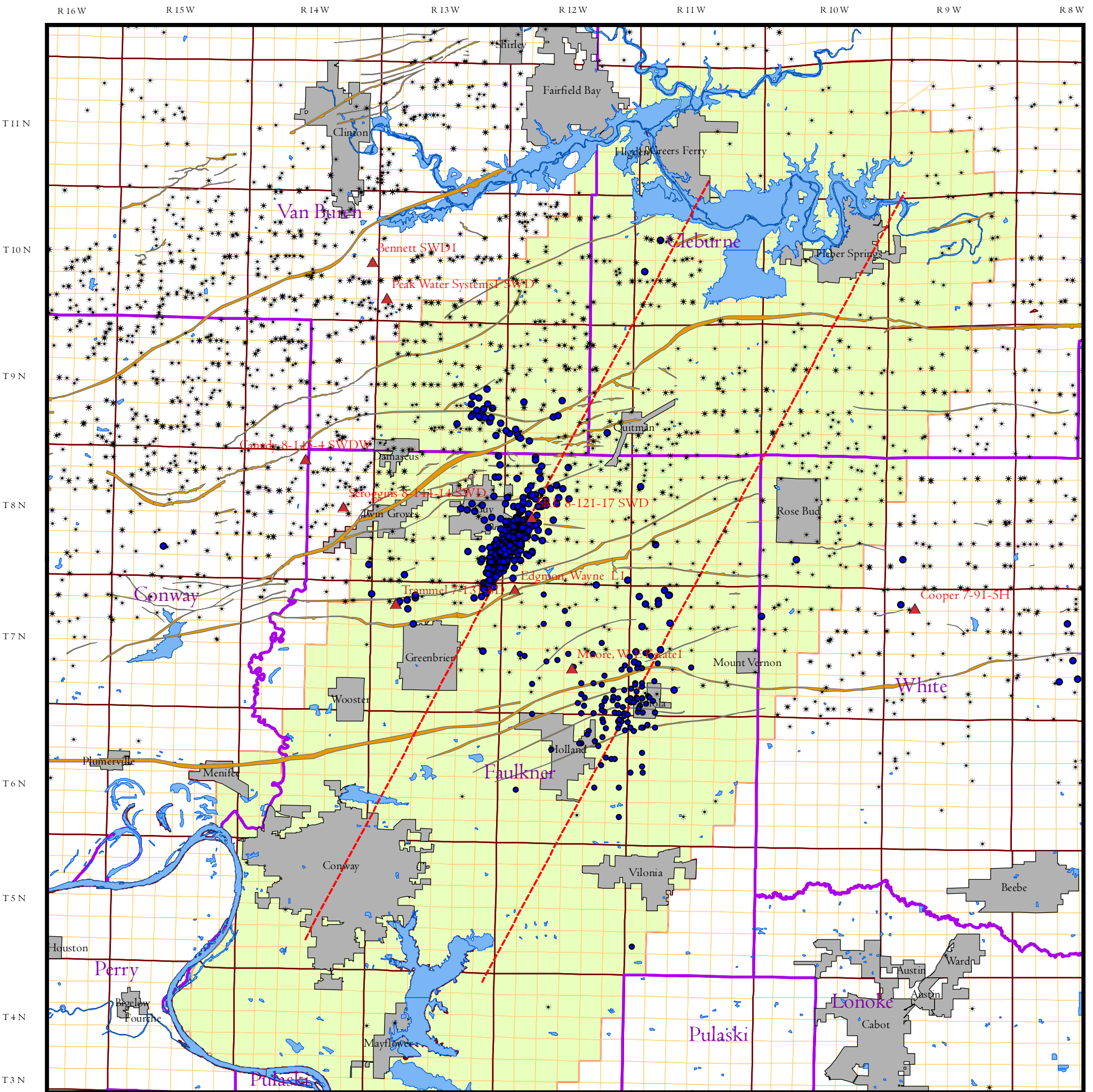
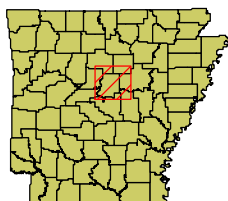
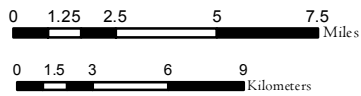


Permanent Disposal Well Moratorium Area



Arkansas Oil and Gas Commission
Lawrence Bengal, Director



Legend

- ▲ Disposal Wells
- * Natural Gas Wells
- Enola1982_1989
- USGS_EVENTS_2010
- - - Proposed Moratorium Center lines
- █ Faults
- █ Moratorium Area
- █ ADMIN_CITY_LIMITS_AHTD_2005_poly



About the Map

The faults depicted on this map are based on available fault data on file at the Arkansas Geological Survey (AGS) and the Arkansas Oil and Gas Commission (AOGC). Faults provided by the AOGC were compiled from integration dockets prepared by various geologists of the companies operating in the Fayetteville Shale Gas Play. These faults are for illustration purposes only and may not represent all faults in a given location or the origin of the earthquakes depicted on this map.

DISCLAIMER

Maps are for graphical purposes only. They do not represent a legal survey. Although this map was compiled from digital data that was successfully processed on a computer system using ESRI ArcGIS 10.x software at the Arkansas Oil and Gas Commission (AOGC), no warranty, expressed or implied, is made by the AOGC regarding the unity of the data on any other system, nor shall the act of distribution constitute any such warranty. While every effort has been made to ensure that these data are accurate and reliable within the limits of the current state of the art, AOGC cannot assume liability for any damages caused by any errors or omissions in the data, nor as a result of the failure of the data to function on a particular system. AOGC makes no warranty, expressed or implied, nor does the fact of distribution constitute such a warranty.

North American Datum 1983
Universal Transverse Mercator
Zone 15 North

Map Compiled by:
Jeremy Ramsey AOGC GIS Analyst
6/7/2011

Sources:
AOGC, AGS, USGS, AHTD, Geostar

Scale: 1:300,000