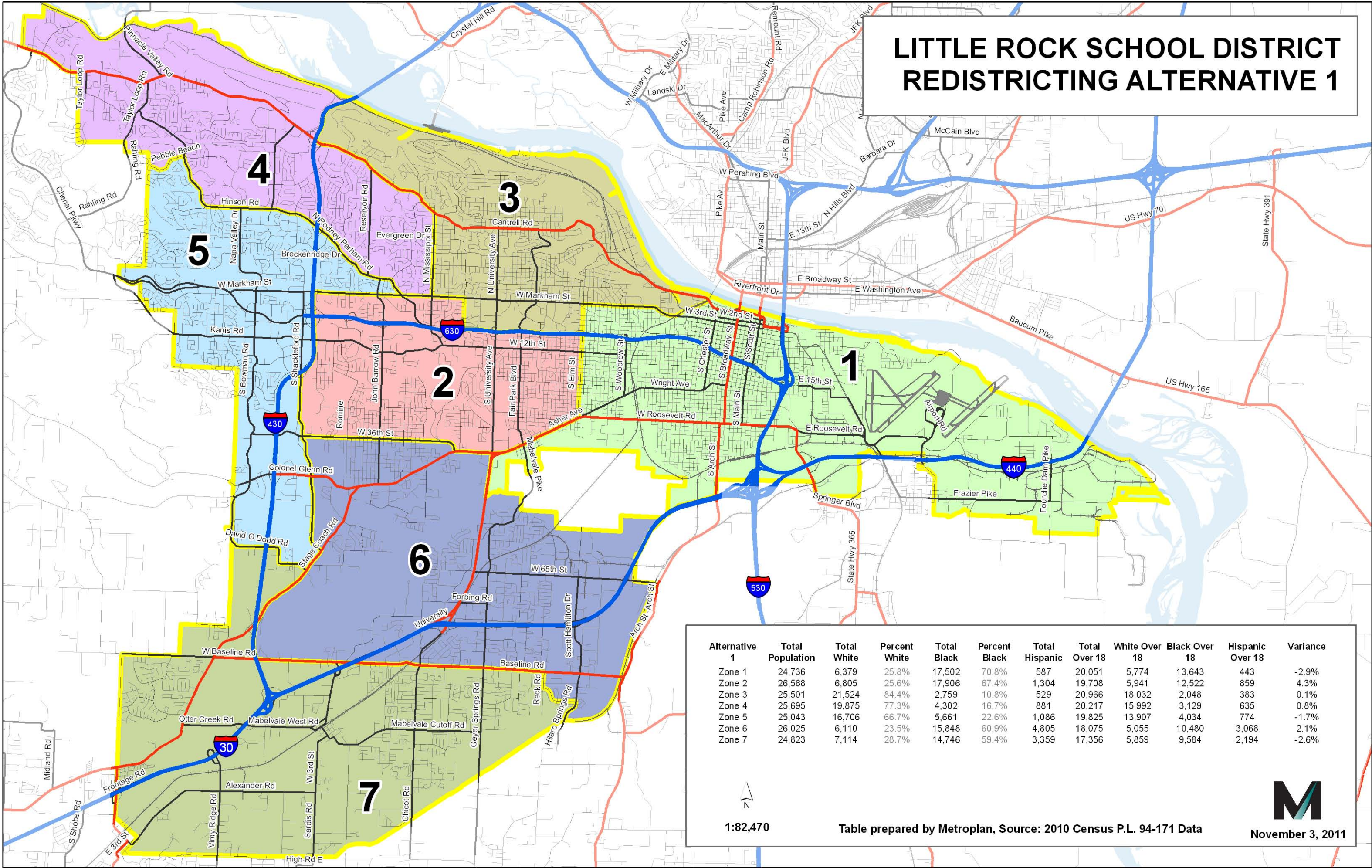


LITTLE ROCK SCHOOL DISTRICT REDISTRICTING ALTERNATIVE 1

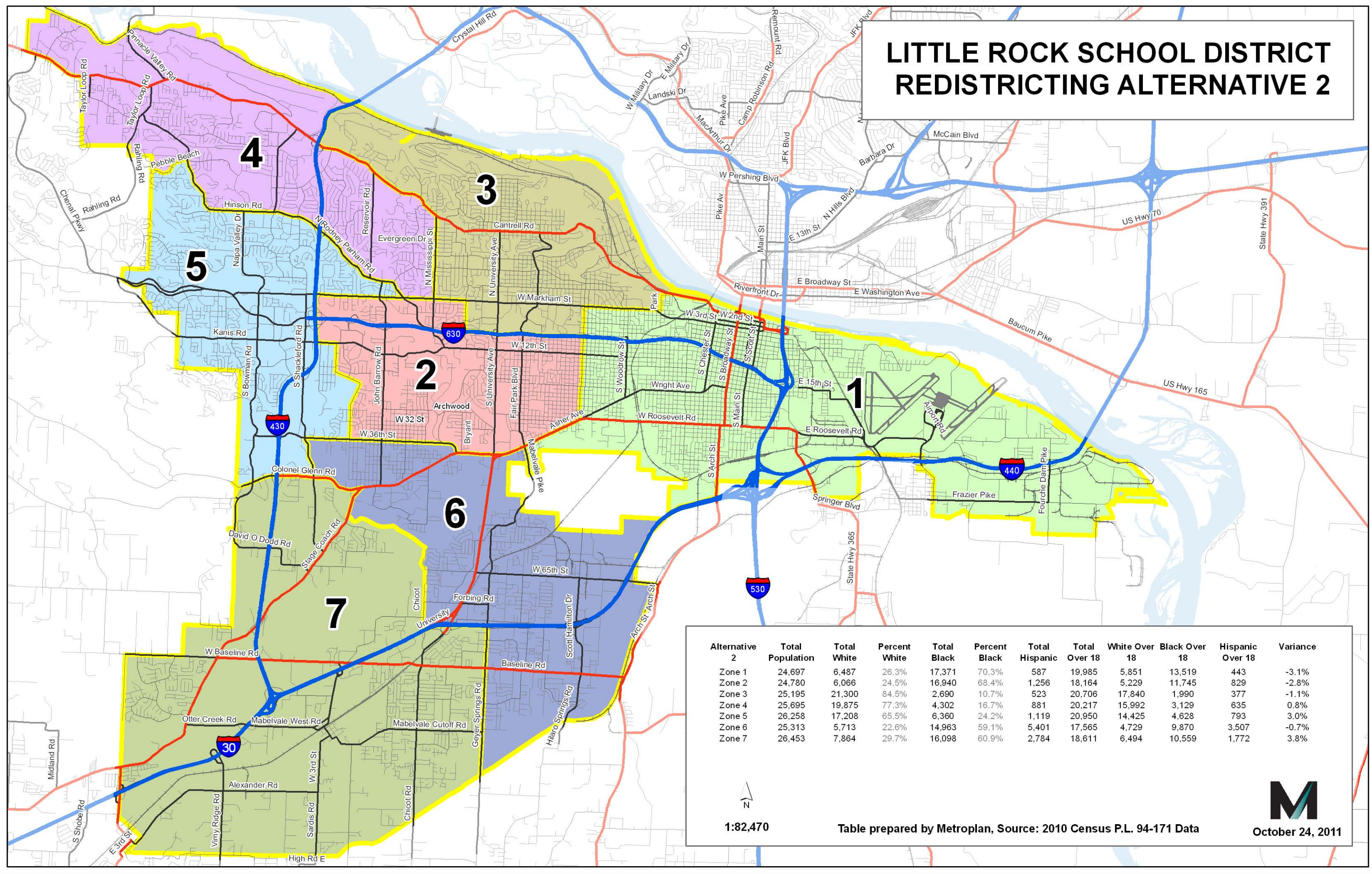


Alternative 1	Total Population	Total White	Percent White	Total Black	Percent Black	Total Hispanic	Total Over 18	White Over 18	Black Over 18	Hispanic Over 18	Variance
Zone 1	24,736	6,379	25.8%	17,502	70.8%	587	20,051	5,774	13,643	443	-2.9%
Zone 2	26,568	6,805	25.6%	17,906	67.4%	1,304	19,708	5,941	12,522	859	4.3%
Zone 3	25,501	21,524	84.4%	2,759	10.8%	529	20,966	18,032	2,048	383	0.1%
Zone 4	25,695	19,875	77.3%	4,302	16.7%	881	20,217	15,992	3,129	635	0.8%
Zone 5	25,043	16,706	66.7%	5,661	22.6%	1,086	19,825	13,907	4,034	774	-1.7%
Zone 6	26,025	6,110	23.5%	15,848	60.9%	4,805	18,075	5,055	10,480	3,068	2.1%
Zone 7	24,823	7,114	28.7%	14,746	59.4%	3,359	17,356	5,859	9,584	2,194	-2.6%

1:82,470

Table prepared by Metroplan, Source: 2010 Census P.L. 94-171 Data

LITTLE ROCK SCHOOL DISTRICT REDISTRICTING ALTERNATIVE 2

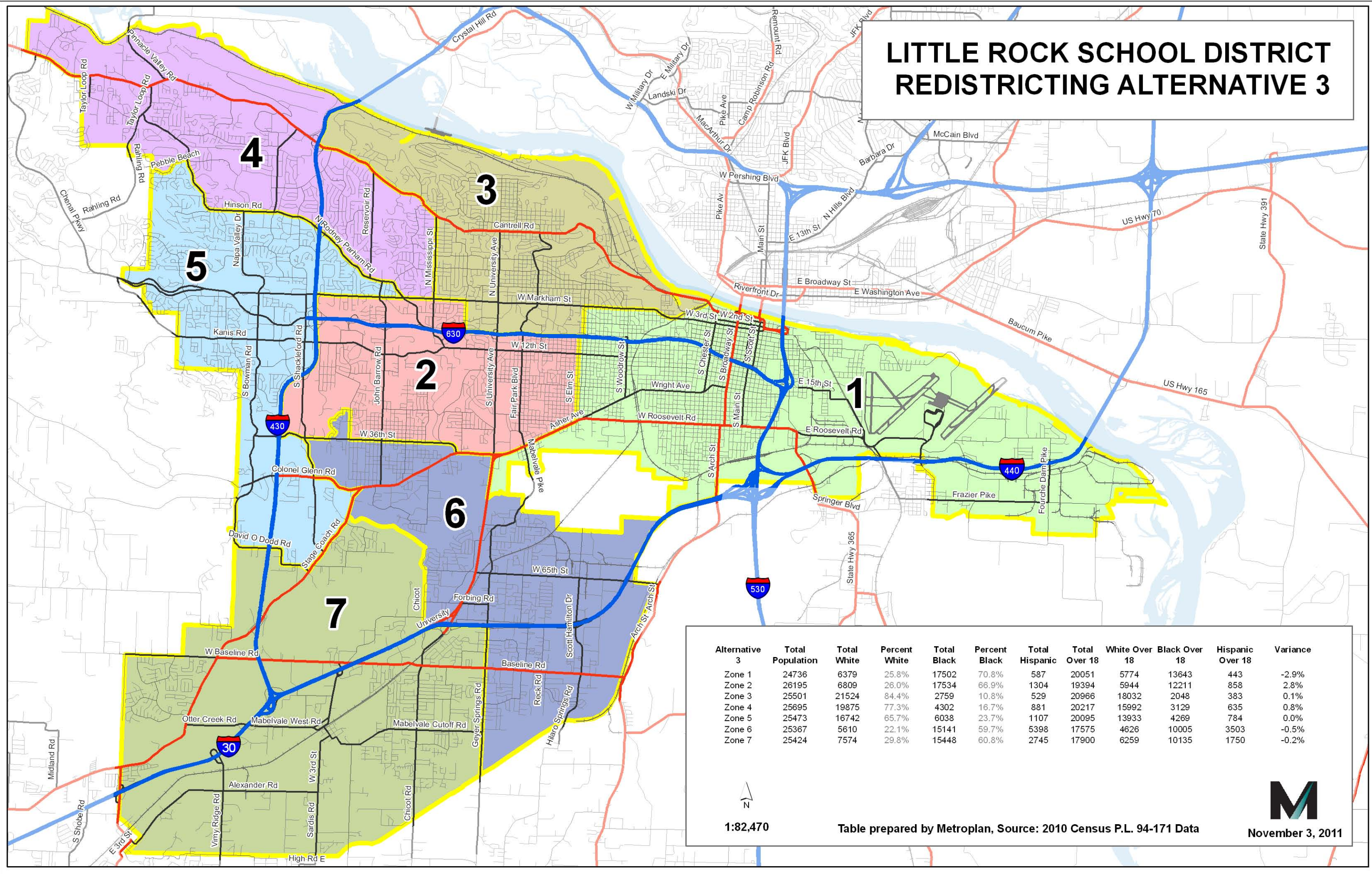


Alternative 2	Total Population	Total White	Percent White	Total Black	Percent Black	Total Hispanic	Total Over 18	White Over 18	Black Over 18	Hispanic Over 18	Variance
Zone 1	24,697	6,487	26.3%	17,371	70.3%	587	19,985	5,851	13,519	443	-3.1%
Zone 2	24,780	6,066	24.5%	16,940	68.4%	1,256	18,164	5,229	11,745	829	-2.8%
Zone 3	25,195	21,300	84.5%	2,690	10.7%	523	20,706	17,840	1,990	377	-1.1%
Zone 4	25,695	19,875	77.3%	4,302	16.7%	881	20,217	15,992	3,129	635	0.8%
Zone 5	26,258	17,208	65.5%	6,360	24.2%	1,119	20,950	14,425	4,628	793	3.0%
Zone 6	25,313	5,713	22.6%	14,963	59.1%	5,401	17,565	4,729	9,870	3,507	-0.7%
Zone 7	26,453	7,864	29.7%	16,098	60.9%	2,784	18,611	6,494	10,559	1,772	3.8%

1:82,470

Table prepared by Metroplan, Source: 2010 Census P.L. 94-171 Data

LITTLE ROCK SCHOOL DISTRICT REDISTRICTING ALTERNATIVE 3



Alternative 3	Total Population	Total White	Percent White	Total Black	Percent Black	Total Hispanic	Total Over 18	White Over 18	Black Over 18	Hispanic Over 18	Variance
Zone 1	24736	6379	25.8%	17502	70.8%	587	20051	5774	13643	443	-2.9%
Zone 2	26195	6809	26.0%	17534	66.9%	1304	19394	5944	12211	858	2.8%
Zone 3	25501	21524	84.4%	2759	10.8%	529	20966	18032	2048	383	0.1%
Zone 4	25695	19875	77.3%	4302	16.7%	881	20217	15992	3129	635	0.8%
Zone 5	25473	16742	65.7%	6038	23.7%	1107	20095	13933	4269	784	0.0%
Zone 6	25367	5610	22.1%	15141	59.7%	5398	17575	4626	10005	3503	-0.5%
Zone 7	25424	7574	29.8%	15448	60.8%	2745	17900	6259	10135	1750	-0.2%

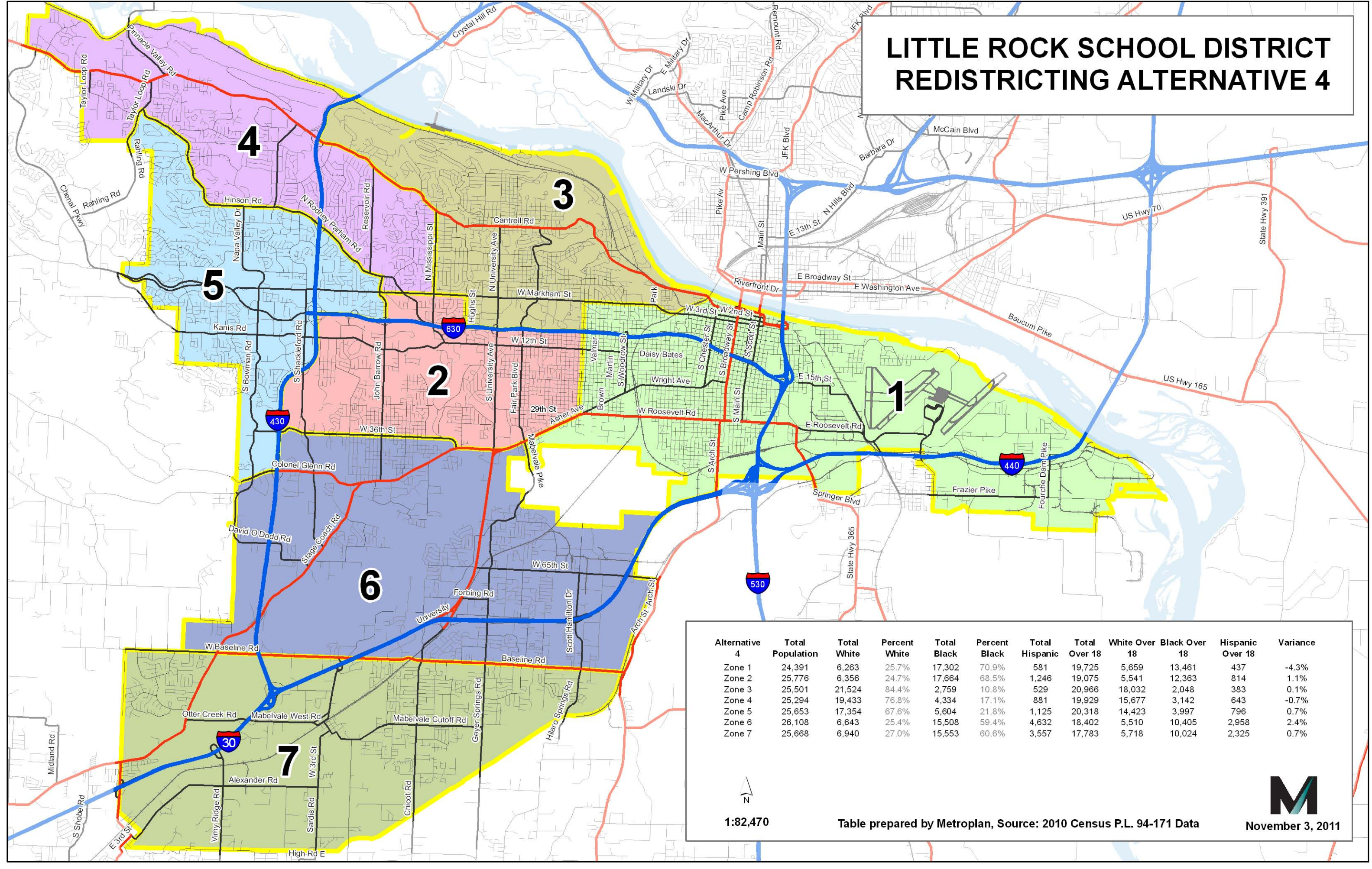
1:82,470

Table prepared by Metroplan, Source: 2010 Census P.L. 94-171 Data



November 3, 2011

LITTLE ROCK SCHOOL DISTRICT REDISTRICTING ALTERNATIVE 4



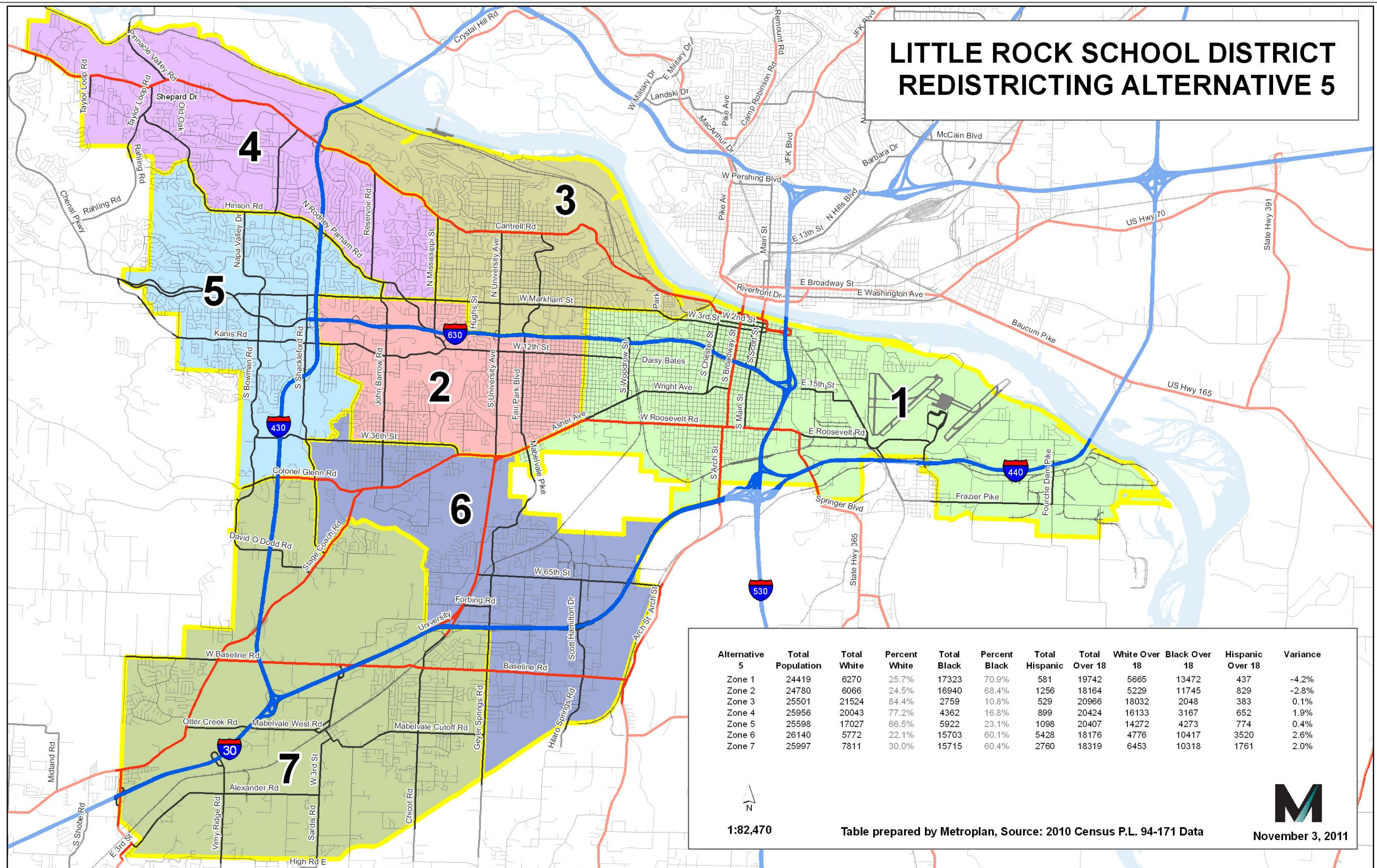
Alternative	Total Population	Total White	Percent White	Total Black	Percent Black	Total Hispanic	Total Over 18	White Over 18	Black Over 18	Hispanic Over 18	Variance
Zone 1	24,391	6,263	25.7%	17,302	70.9%	581	19,725	5,659	13,461	437	-4.3%
Zone 2	25,776	6,356	24.7%	17,664	68.5%	1,246	19,075	5,541	12,363	814	1.1%
Zone 3	25,501	21,524	84.4%	2,759	10.8%	529	20,966	18,032	2,048	383	0.1%
Zone 4	25,294	19,433	76.8%	4,334	17.1%	881	19,929	15,677	3,142	643	-0.7%
Zone 5	25,653	17,354	67.6%	5,604	21.8%	1,125	20,318	14,423	3,997	796	0.7%
Zone 6	26,108	6,643	25.4%	15,508	59.4%	4,632	18,402	5,510	10,405	2,958	2.4%
Zone 7	25,668	6,940	27.0%	15,553	60.6%	3,557	17,783	5,718	10,024	2,325	0.7%

1:82,470

Table prepared by Metroplan, Source: 2010 Census P.L. 94-171 Data

M
November 3, 2011

LITTLE ROCK SCHOOL DISTRICT REDISTRICTING ALTERNATIVE 5



Alternative	Total Population	Total White	Percent White	Total Black	Percent Black	Total Hispanic	Total Over 18	White Over 18	Black Over 18	Hispanic Over 18	Variance
Zone 1	24419	6270	25.7%	17323	70.9%	581	19742	5665	13472	437	-4.2%
Zone 2	24780	6066	24.5%	16940	68.4%	1256	18164	5229	11745	829	-2.8%
Zone 3	25501	21524	84.4%	2759	10.8%	529	20966	18032	2048	383	0.1%
Zone 4	25956	20043	77.2%	4362	16.8%	899	20424	16133	3167	652	1.9%
Zone 5	25598	17027	66.5%	5922	23.1%	1098	20407	14272	4273	774	0.4%
Zone 6	26140	5772	22.1%	15703	60.1%	5428	18176	4776	10417	3520	2.6%
Zone 7	25997	7811	30.0%	15715	60.4%	2760	18319	6453	10318	1761	2.0%

1:82,470

Table prepared by Metroplan, Source: 2010 Census P.L. 94-171 Data



November 3, 2011