

# Impact of Statewide Transportation Ballot Initiatives in Northwest Arkansas

Presented to  
Northwest Arkansas  
Regional Mobility Authority

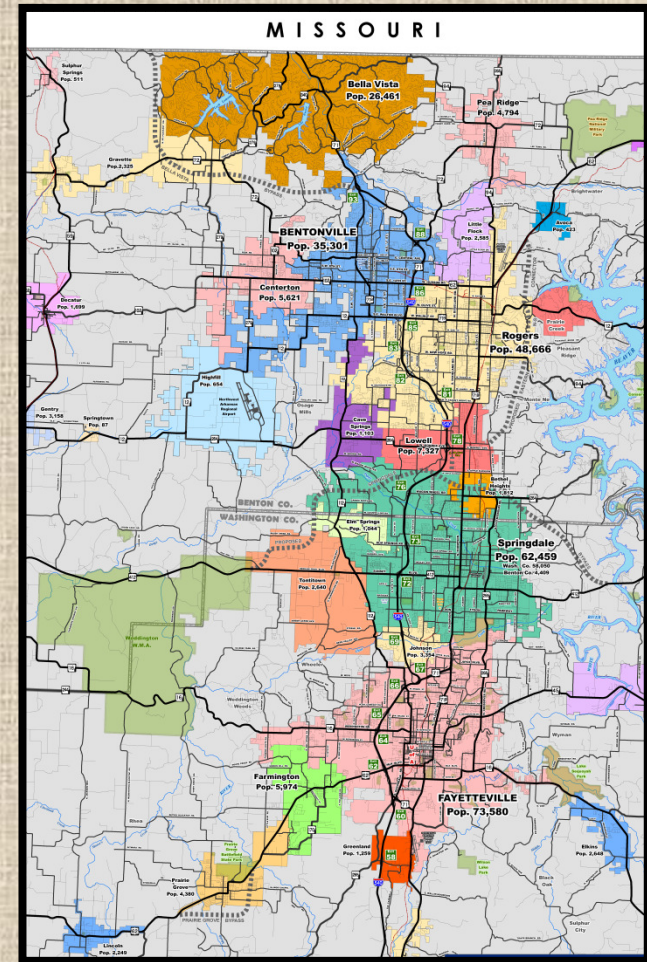
By  
Lorie Tudor  
Assistant Chief Engineer - Planning

January 10, 2013



# Major Projects in Northwest Arkansas

- Bella Vista Bypass
- Springdale Bypass
- NWA Airport Access
- Interstate 540 Improvements
- Eastern North-South Corridor



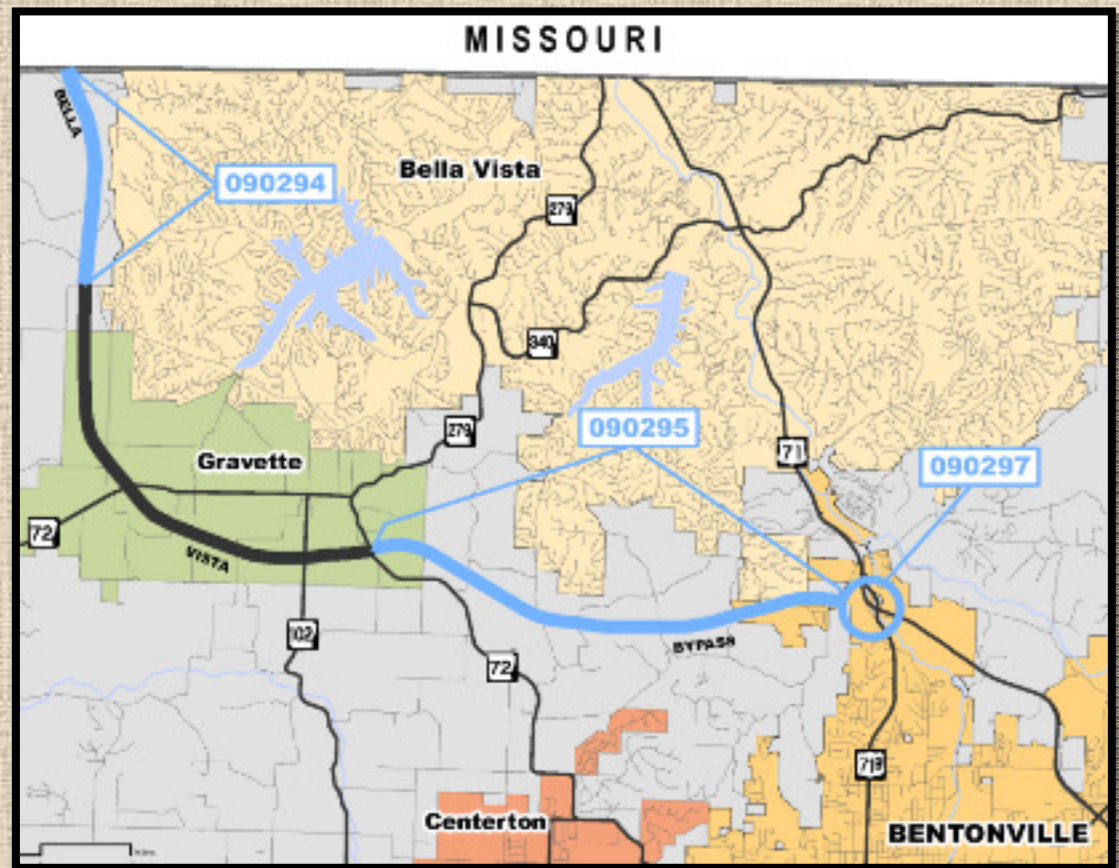
# Highway 71 - Bella Vista Bypass

**Job 090294 – Co. Rd. 34-Mo. St. Line (B.V. Bypass)**

**Job 090295 – Hwy. 71-Hwy. 72 South (Bella Vista Bypass)**

**Job 090297 – Hwy. 71 Interchange (B.V. Bypass)**

- \$100 Million
  - Half Cent Sales Tax
- Project Status
  - Environmental – 85%
  - Survey – 100%
  - Design – 50%
  - ROW and Utilities – 95% and 55%
- Possible Issues
  - Two Archeological Sites Require Evaluation
  - Coordination with Missouri DOT



# Highway 71 - Bella Vista Bypass



Construction Activities between  
Highways 72 South and 72 North.

# Highway 71 - Bella Vista Bypass

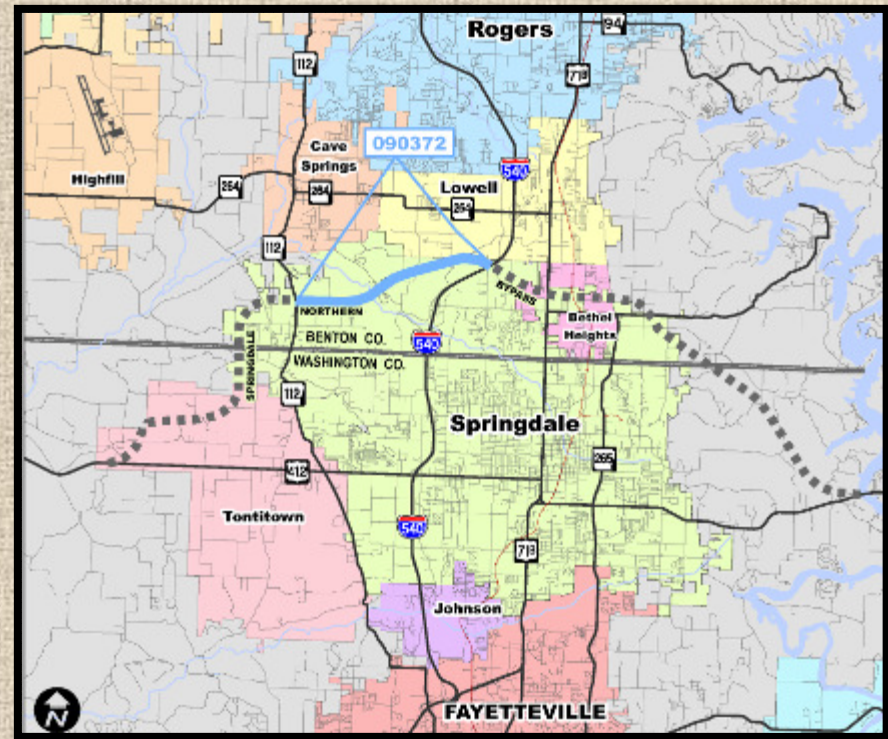


Construction Activities between  
Highway 72 North and County Road 34.

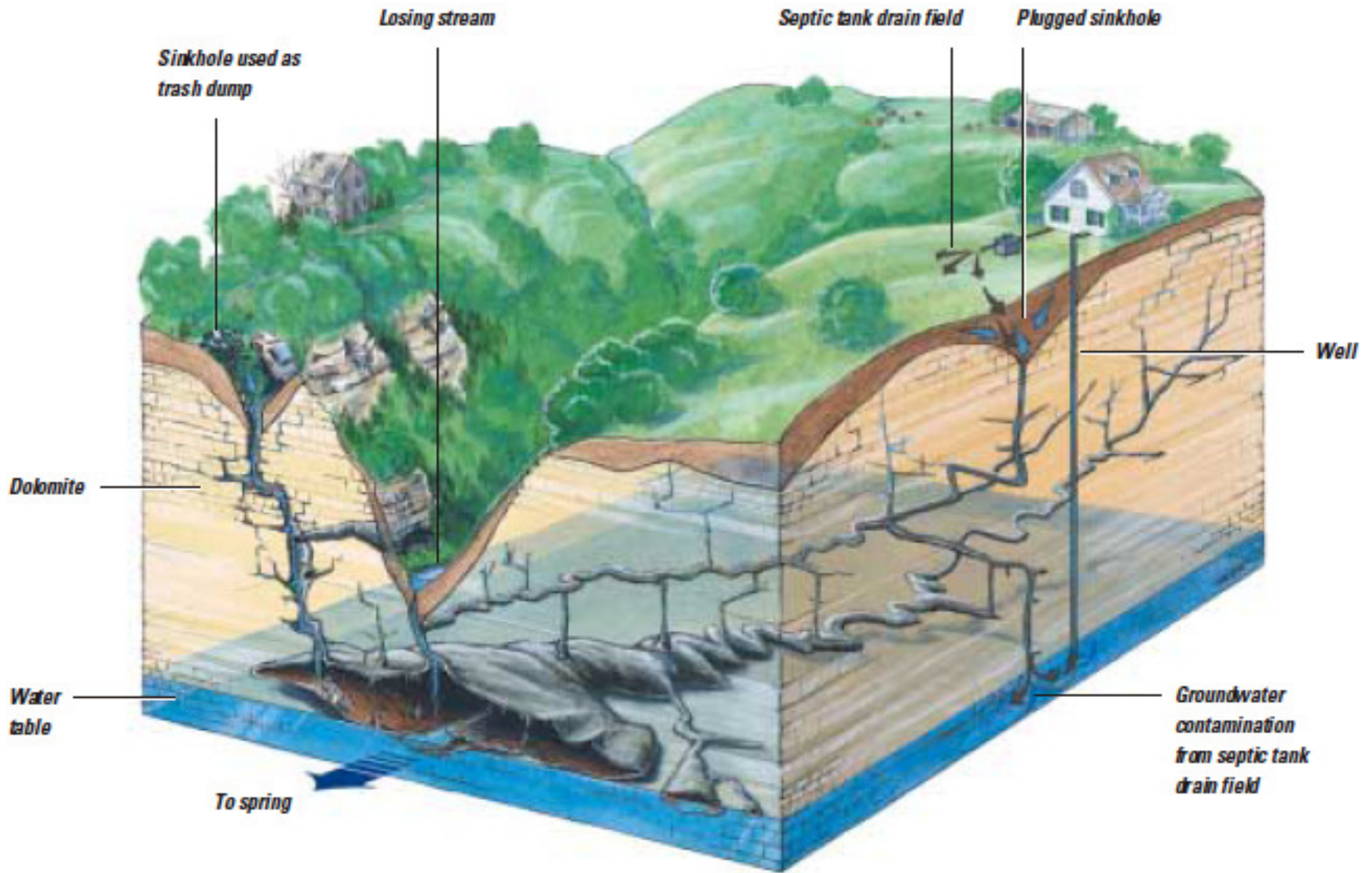
# Highway 412 – Springdale Bypass

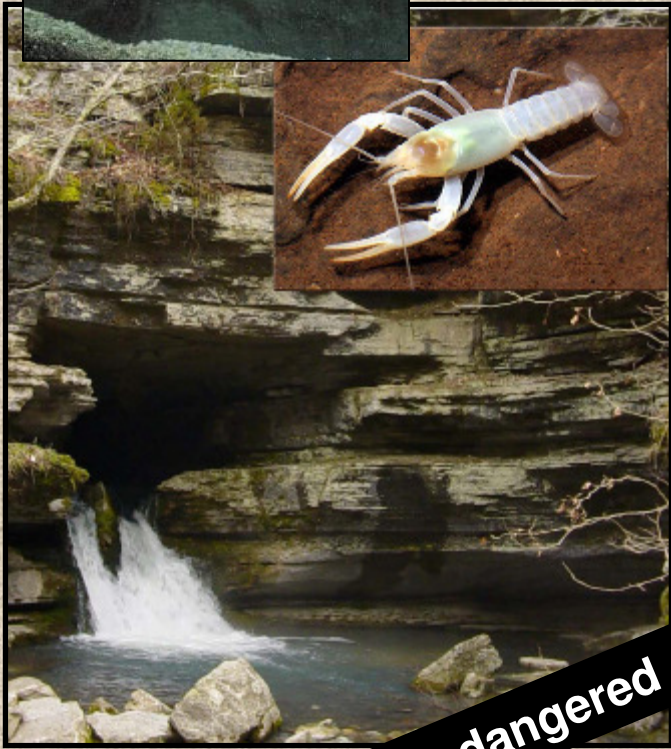
## Job 090372 – Hwy. 112-I-540

- \$150 Million
  - Half Cent Sales Tax
- Project Status
  - Environmental – 90%
  - Survey – 100%
  - Design – 60%
  - ROW and Utilities – 30% and 30%
- Possible Issues
  - Additional Archeological Evaluation
  - Environmental Reassessment
  - Cave Springs Recharge Area
  - Endangered or Threatened Species/Habitat – Ozark Cavefish, Cave (Benton County) Crayfish

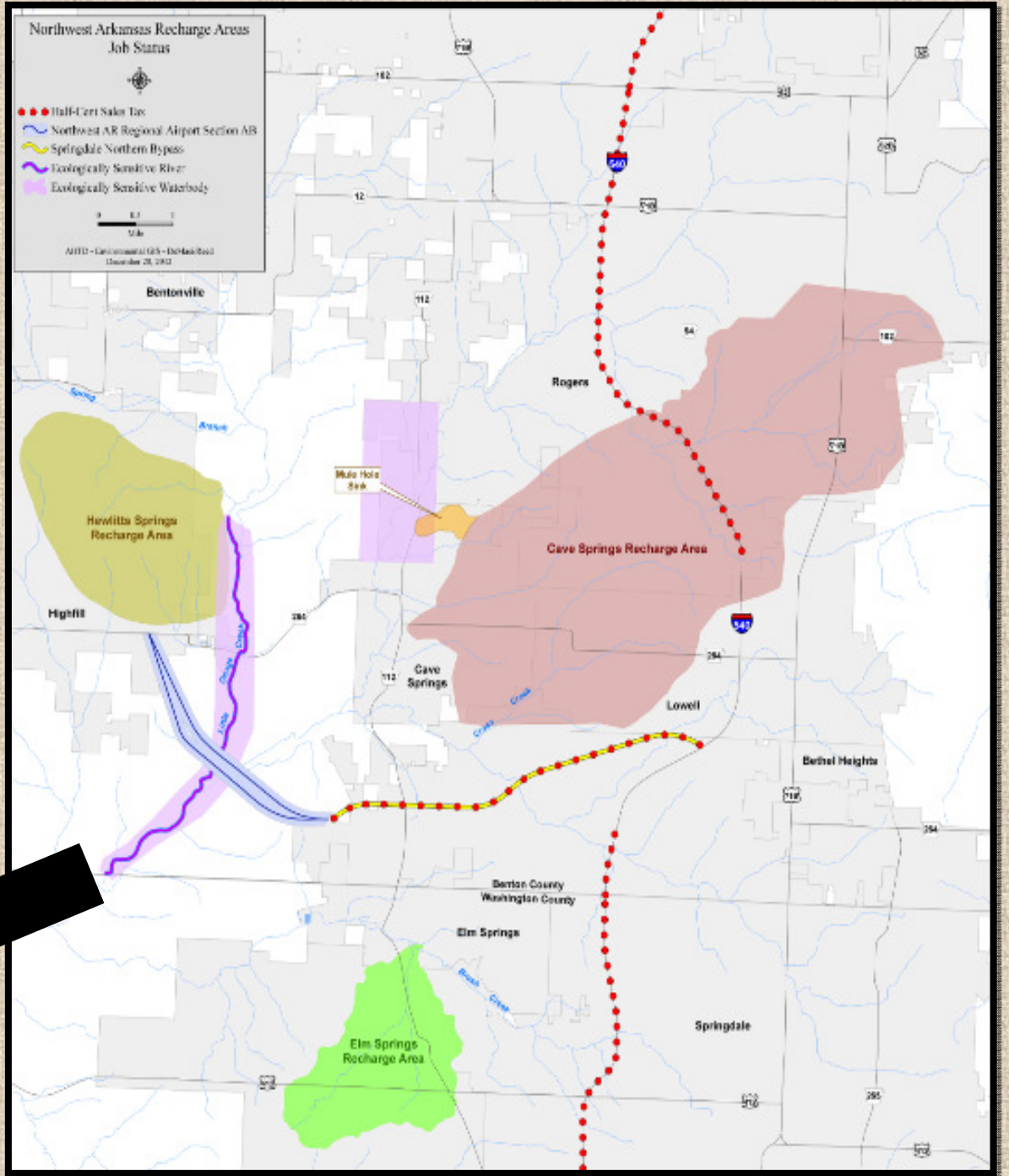


*How karst systems are formed*





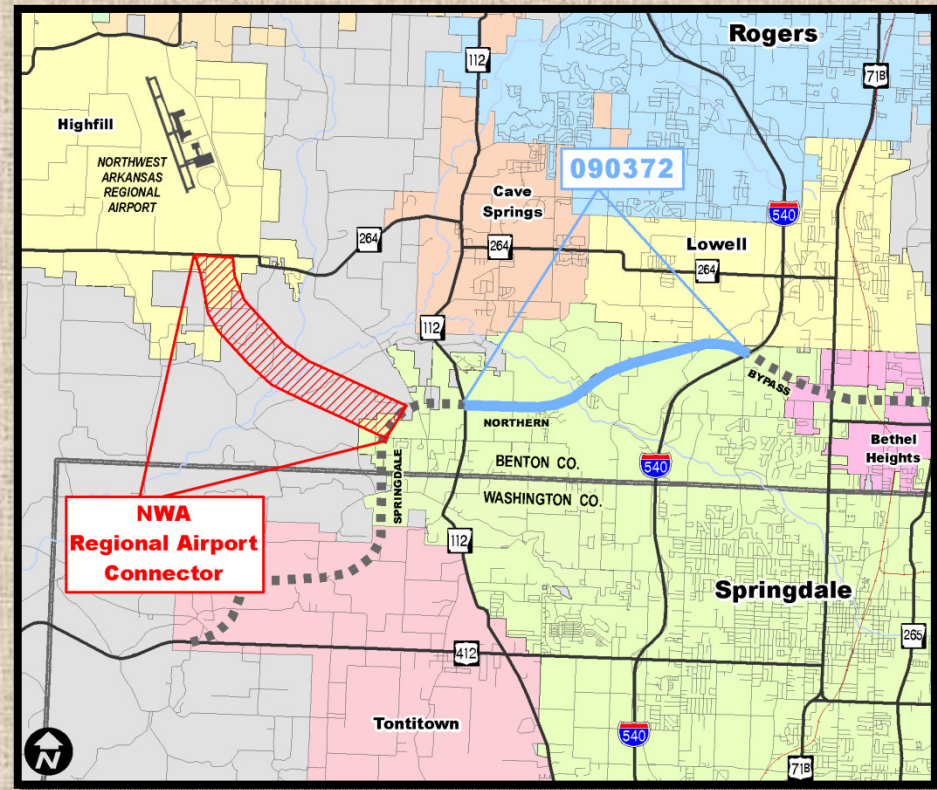
**Threatened / Endangered**





# Northwest Arkansas Regional Airport Access

- Draft Environmental Impact Statement was Approved October 2012
- Currently Reviewing Public Comments
- \$93 Million
  - Earmark (\$11 M)
  - Local



FHWA-AR-EIS-06-1-D  
State Project 090669  
Federal Project FAP HFP 0238(1)

**NORTHWEST ARKANSAS REGIONAL AIRPORT  
INTERMODAL ACCESS ROAD**

**Draft Environmental Impact Statement**

Submitted Pursuant to: 42 USC 4332(2)(c)  
42 USC 303  
42 USC 138

By the  
The Northwest Arkansas Regional Airport Authority

*Oct 4 2012*  
Date of Approval *Scott Van Lingen*  
Northwest Arkansas Regional Airport Authority

*10-12-2012*  
Date of Approval *Ray C. Bennett*  
Arkansas State Highway and Transportation Department

*10-10-2012*  
Date of Approval *John L. O'Brien*  
Federal Highway Administration

The following persons may be contacted for additional information considering this document:

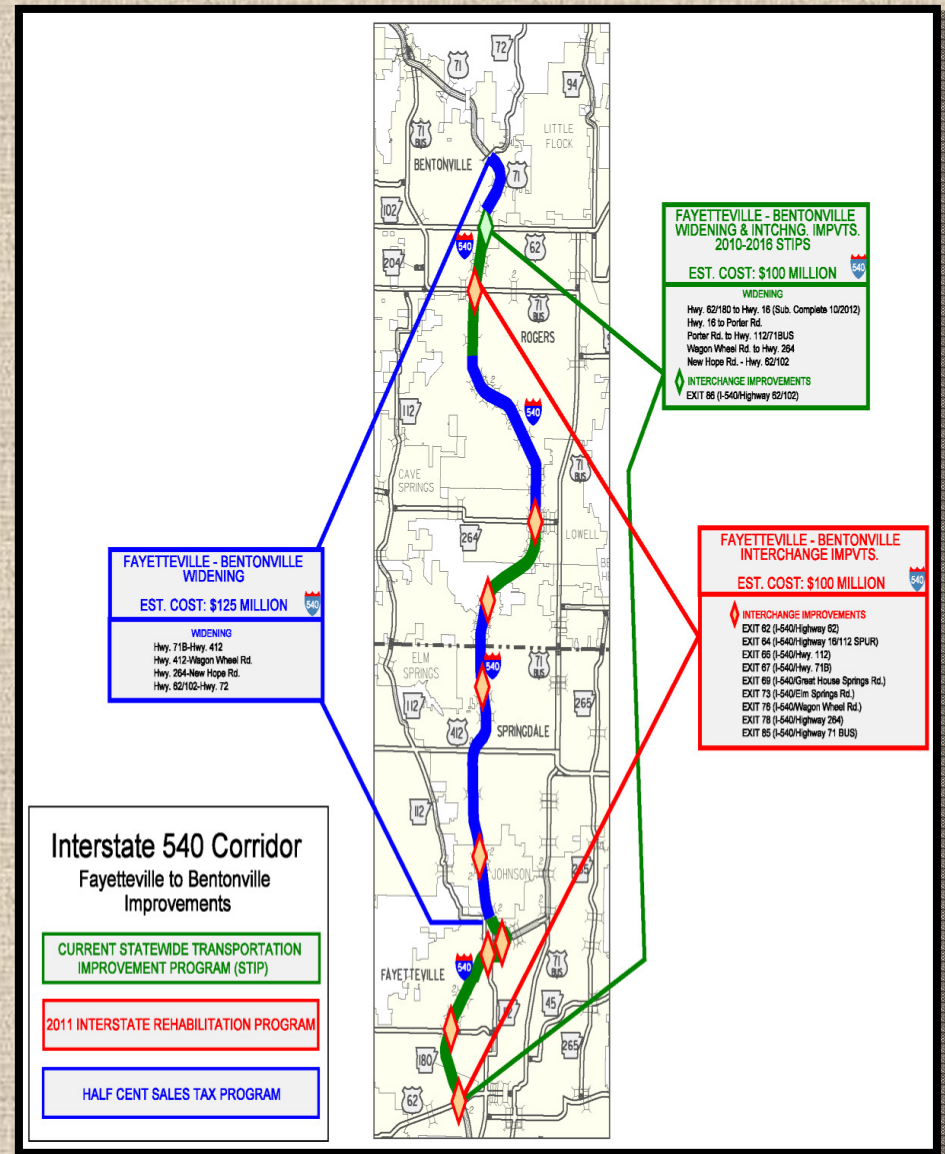
Brenda Price Arkansas State Highway and Transportation Department Environmental Division PO Box 2261 Little Rock, AR 72203-2261 (501) 569-2281	Randal Looney Federal Highway Administration Arkansas Division Office 700 West Capitol 3130 Federal Office Building Little Rock, AR 72201 (501) 324-5625	Scott VanLingen Northwest Arkansas Regional Airport Auth. One Airport Boulevard Suite 100 Bentonville, AR 72712 (479) 205-1090
--	--	--

This project is a proposal to construct a four-lane, fully controlled access highway, designed to Interstate standards, on a new location connecting the Northwest Arkansas Regional Airport to the state and federal highway systems. The proposed highway would be approximately 8 miles (12.9 kilometers) in length through Benton County, Arkansas. Several alternatives were considered including the No Action Alternative.

Comments on this DEIS are due by **DEC 14, 2012** and should be sent to:  
The Northwest Arkansas Regional Airport Authority  
One Airport Boulevard  
Suite 100  
Bentonville, AR 72712

# Interstate 540 Corridor

- 17 Projects
- \$370 Million
- Approximately 26 Miles
  
- Possible Issues
  - Cave Springs Recharge Area
  - Endangered or Threatened Species/Habitat – Ozark Cavefish, Cave (Benton Co.) Crayfish
  - Coordination with Interchange Work
  - Railroad Involvement



# Exit 62 – Highways 62/180 Interchange

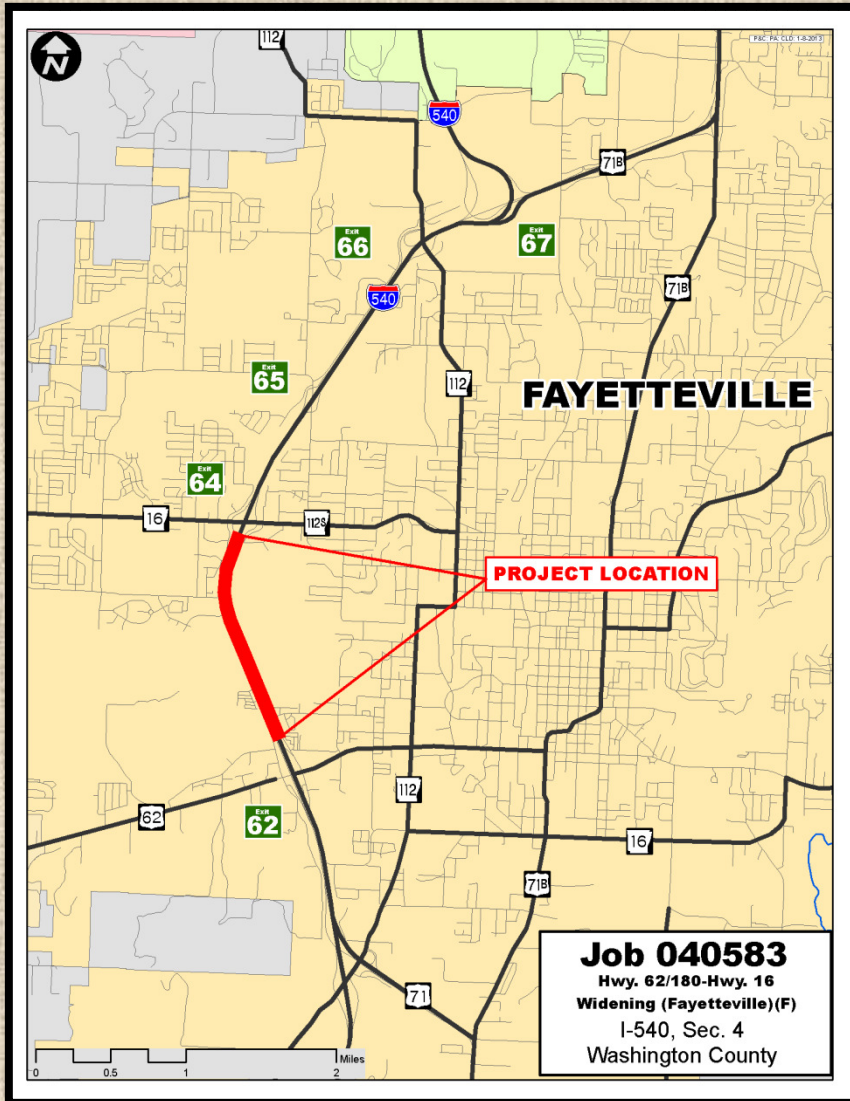
Job BB0410 – Hwy. 62 Intchng. Impvts. (F)



- \$25 Million
  - 2011 Interstate Rehabilitation Program
- Scheduled for Late 2014

# Highways 62/180 to Highways 16/112 Spur

Job 040583 – Hwy. 62/180-Hwy. 16 Widening (Fayetteville) (F)



- \$5.8 Million
  - Statewide Transportation Improvement Program
- Project Status
  - Let to Contract: May 2012
  - Substantially Complete: October 2012

# Exit 64 – Highways 16/112 Spur Interchange

Job BB0411 – Hwy. 16/112 Spur Intchng. Impvts. (S)

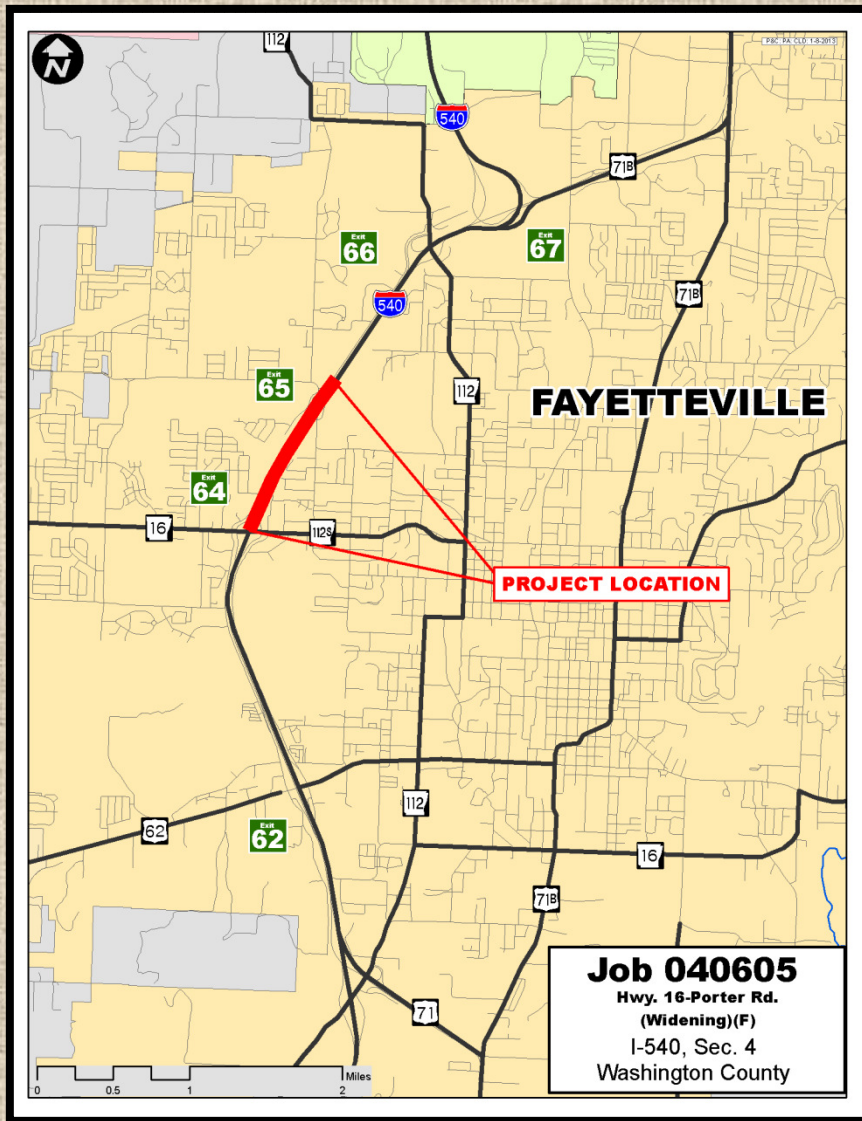


- \$19 Million
  - 2011 Interstate Rehabilitation Program
- Scheduled for Late 2014



# Highways 16/112 Spur to Porter Road

Job 040605 - Hwy. 16-Porter Rd. (Widening) (S)

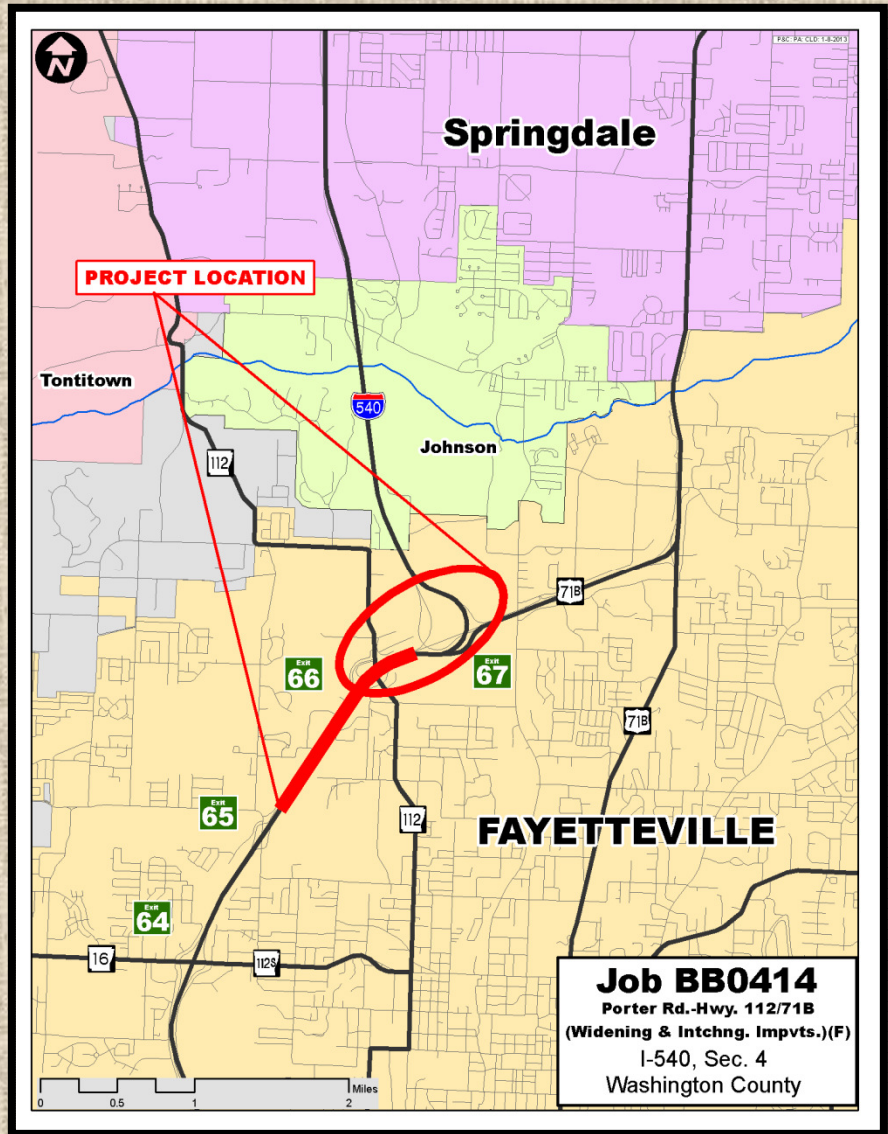


- \$9 Million
  - Statewide Transportation Improvement Program
- Scheduled for Mid-2013

# Porter Road to Highway 71B

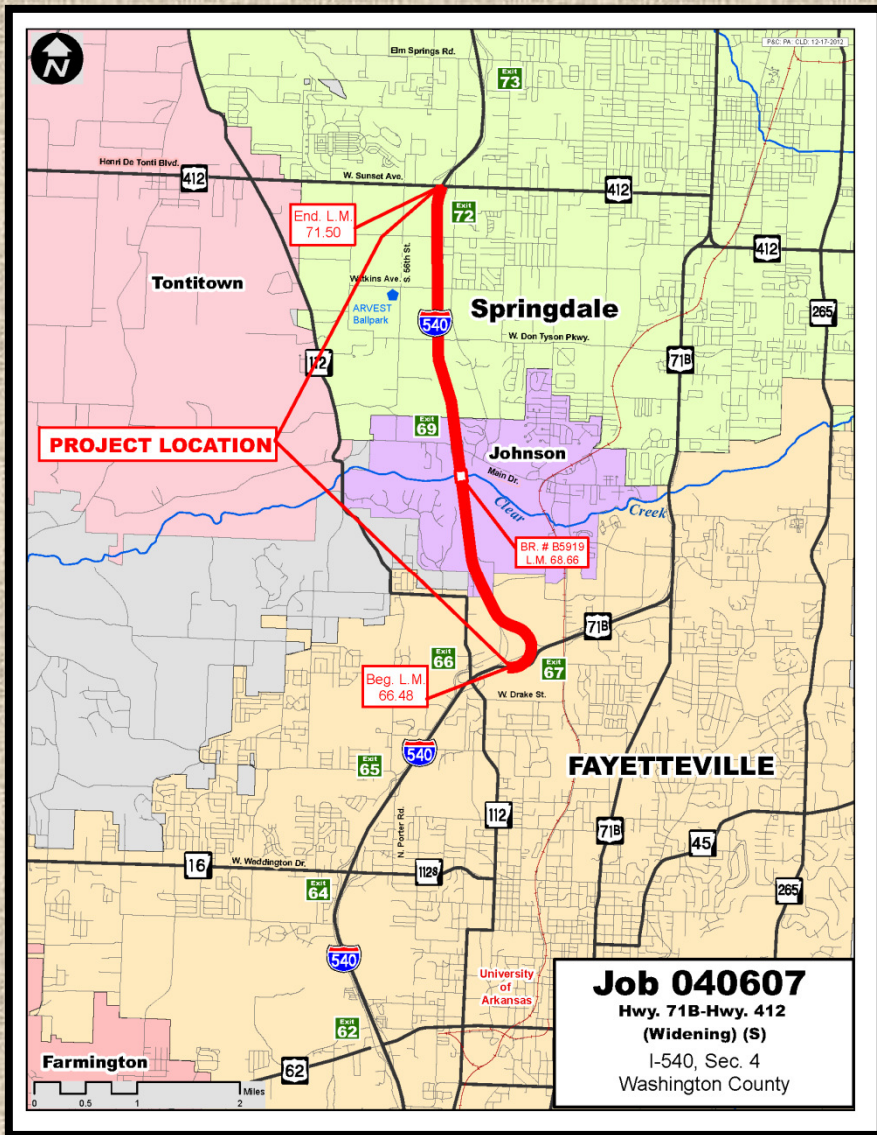
## Job BB0414 - Porter Rd.-Hwy. 112/71B Widening & Intchnng. Impvts. (F)

- \$55 Million
  - 2011 Interstate Rehabilitation Program
  - Statewide Transportation Improvement Program
  - Local Funds
- Scheduled for Mid-2015



# Highway 71B to Highway 412

Job 040607 - Hwy. 71B-Hwy. 412 (Widening) (F)



- \$30 Million
  - Half Cent Sales Tax
- Schedule - TBD



# Exit 69 – Greathouse Springs Road Interchange

Job BB0412 – Greathouse Springs Rd. Intchnng. Impvts. (S)



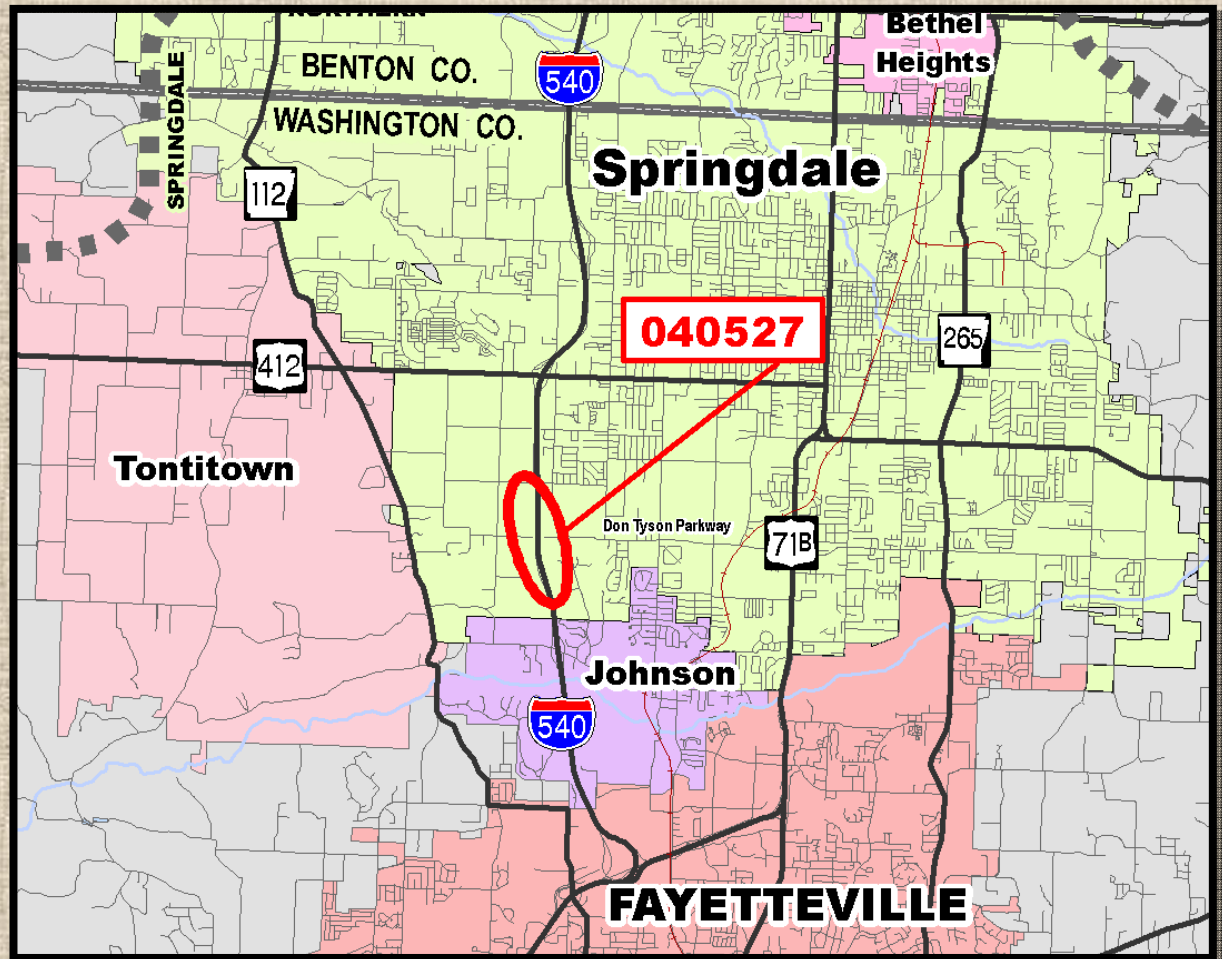
- \$2 Million
  - 2011 Interstate Rehabilitation Program
- Scheduled for Late 2013



# Don Tyson Parkway Interchange

Job 040527 – I-540/Don Tyson Pkwy. Intchng. (Springdale) (F)

- \$30 Million
  - Local Funds
- Scheduled for Spring 2013





# Exit 73 – Elm Springs Road Interchange

Job BB0413 – Elm Springs Rd. Intchnng. Impvmts. (S)

- \$4 Million
  - 2011 Interstate Rehabilitation Program
  - Possible Local Funds
- Scheduled for Late 2013



# Exit 76 – Wagon Wheel Road Interchange

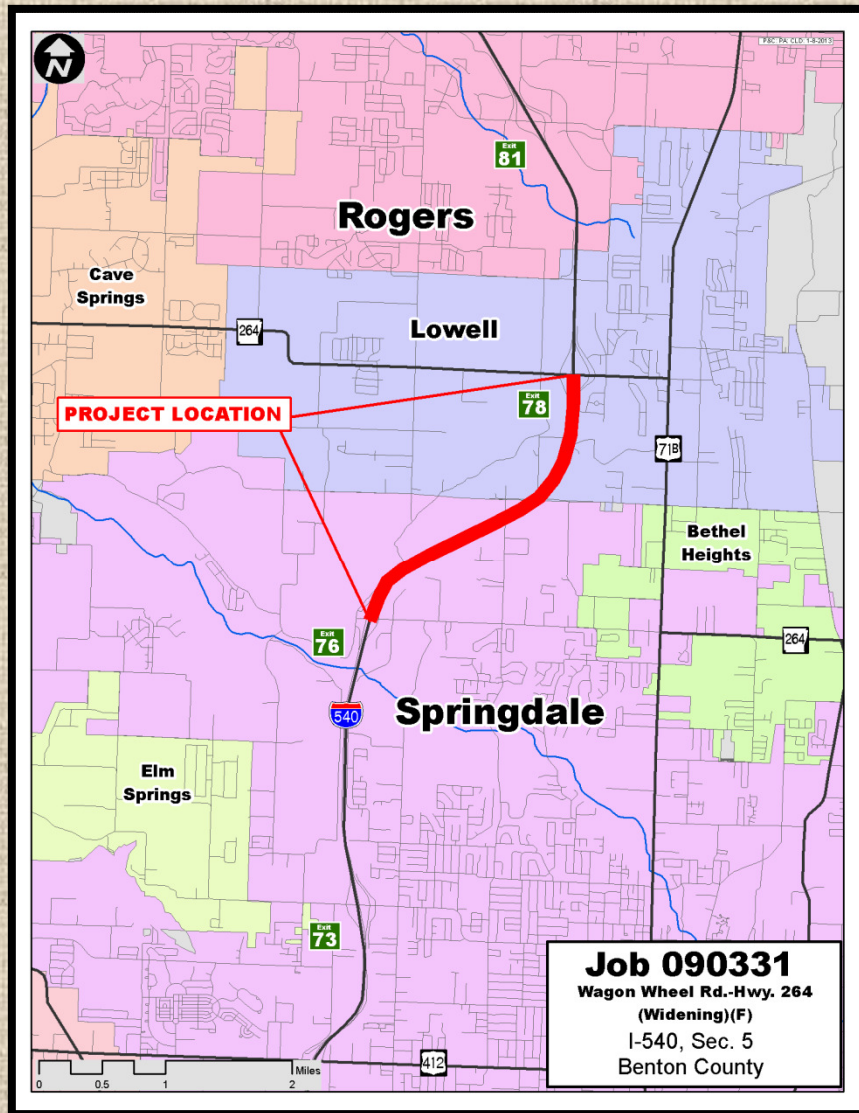
Job BB0901 – Wagon Wheel Rd. Intchnng. Impvts. (S)



- \$2 Million
  - 2011 Interstate Rehabilitation Program
- Scheduled for Late 2014

# Wagon Wheel Road to Highway 264

Job 090331 – Wagon Wheel Rd.-Hwy. 264 (Widening) (S)



- \$16 Million
  - Statewide Transportation Improvement Program
  - Scheduled for Late 2013

# Exit 78 – Highway 264 Interchange

Job BB0902 – Hwy. 264 Intchn. Impvts. (S)

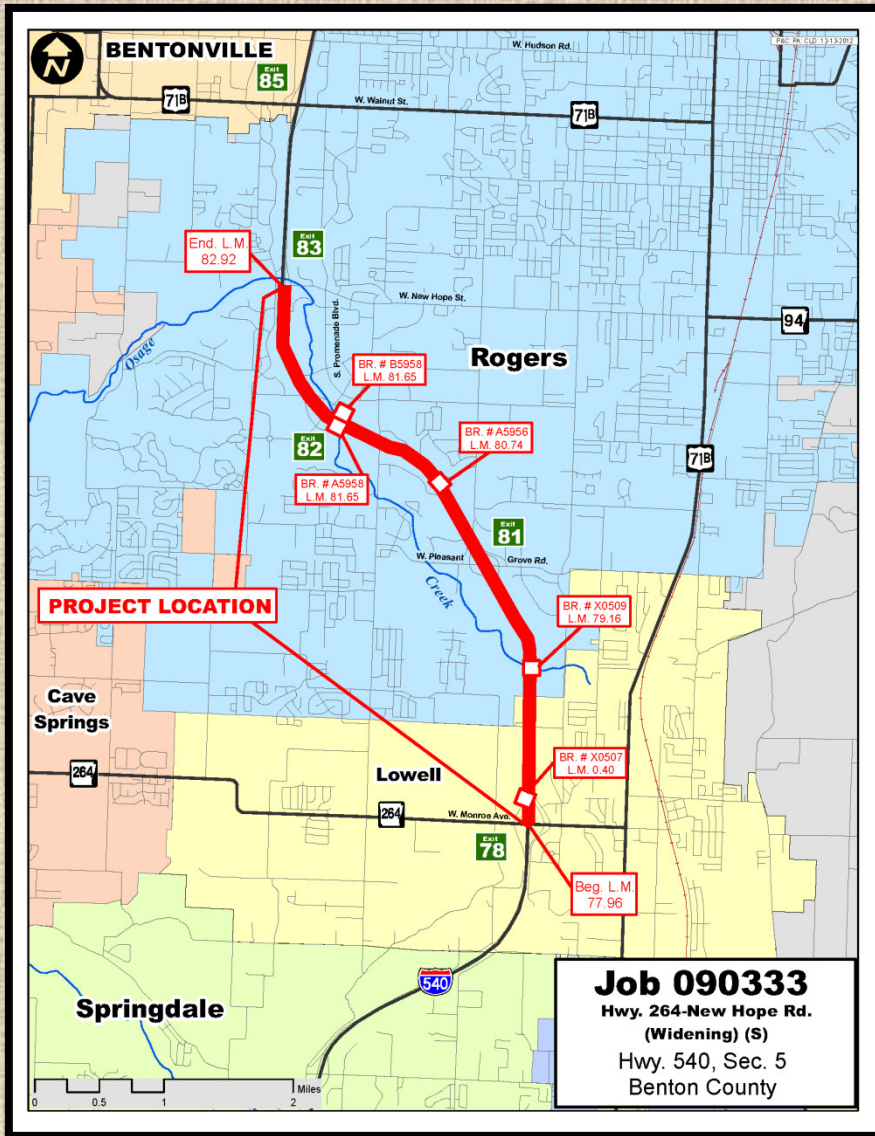


- \$4 Million
  - 2011 Interstate Rehabilitation Program
- Scheduled for Late 2013



# Highway 264 to New Hope Road

Job 090333 – Hwy. 264-New Hope Rd. (Widening) (F)



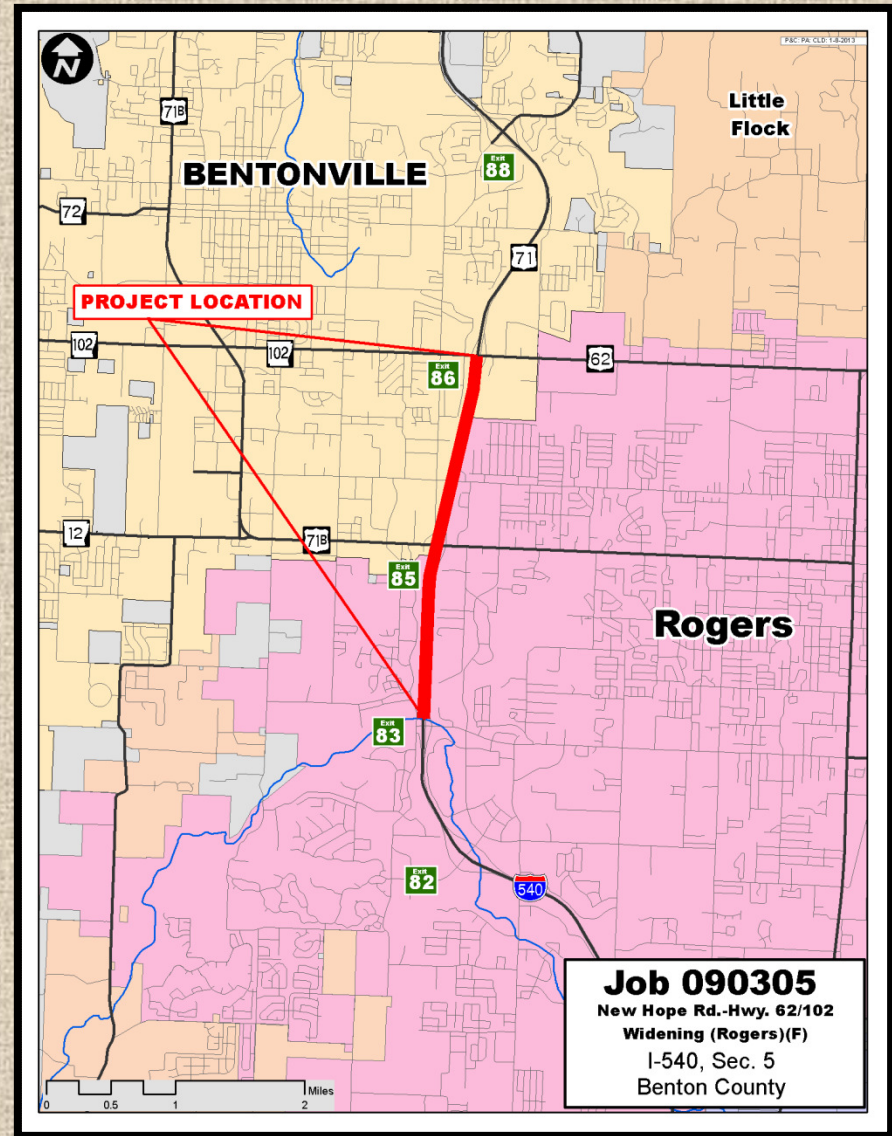
- \$30 Million
  - Half Cent Sales Tax
- Schedule - TBD



# New Hope Road to Highways 62/102

Job 090305 – New Hope Rd.-Hwy. 62/102 Widening (Rogers) (F)

- \$16 Million
  - Statewide Transportation Improvement Program
- Scheduled for Mid-2014



# Exit 85 – Highway 71B Interchange

Job BB0903 – Hwy. 71B Intchnng. Impvts. (F)



- \$20 Million
  - 2011 Interstate Rehabilitation Program
- Scheduled for 2015

# Exit 86 – Highway 62/102 Interchange

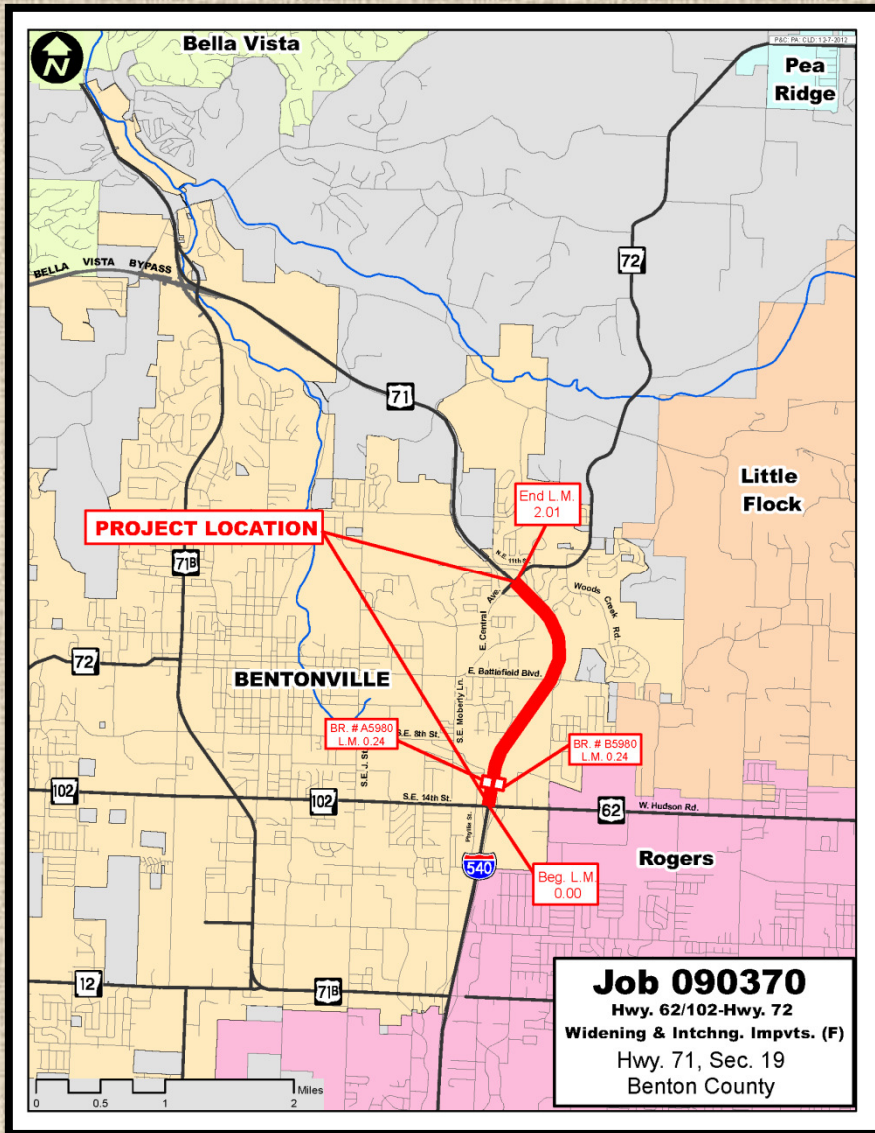
Job 090376 – I-540/Hwy. 62/102 Intchnng. & 8<sup>th</sup> Street Impvts. (Bentonville) (F)

- \$53 Million
  - Statewide Transportation Improvement Program
  - Earmark
  - Local
- Scheduled – Contingent on City



# Highways 62/102 to Highway 72

Job 090370 – Hwy. 62/102-Hwy. 72 Widening & Intchnng. Impvts. (F)



- \$15 Million
  - Half Cent Sales Tax
- Schedule - TBD

# Interstate 540 Corridor Improvement Summary

- **\$ 20.6 Million** - Let to Contract (Completed in the last 10 years)
- **\$ 83.2 Million** - 2013–2016 Statewide Transportation Improvement Program (STIP) Funds
- **\$121.3 Million** - 2011 Interstate Rehabilitation Program Funds
- **\$123.0 Million** - Half Cent Sales Tax Funds
- **\$348.1 Million** - Grand Total



# Highway 265 – Eastern North-South Corridor

Job 090373 – Hwy. 264-Hwy. 94 (S)

Job 012153 – Eastern North-South Corridor (Phase II) (S)

- \$25 Million
  - Statewide Transportation Improvement Program
- Project Status
  - Environmental – 75%
  - Survey – 80%
  - Design – 0%
  - ROW and Utilities – 0%
- Possible Issues
  - Abandoned Mine System

