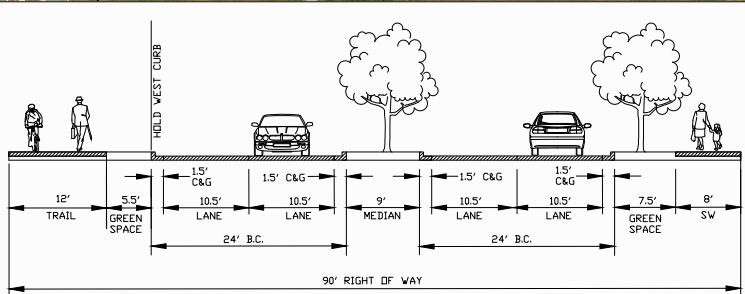
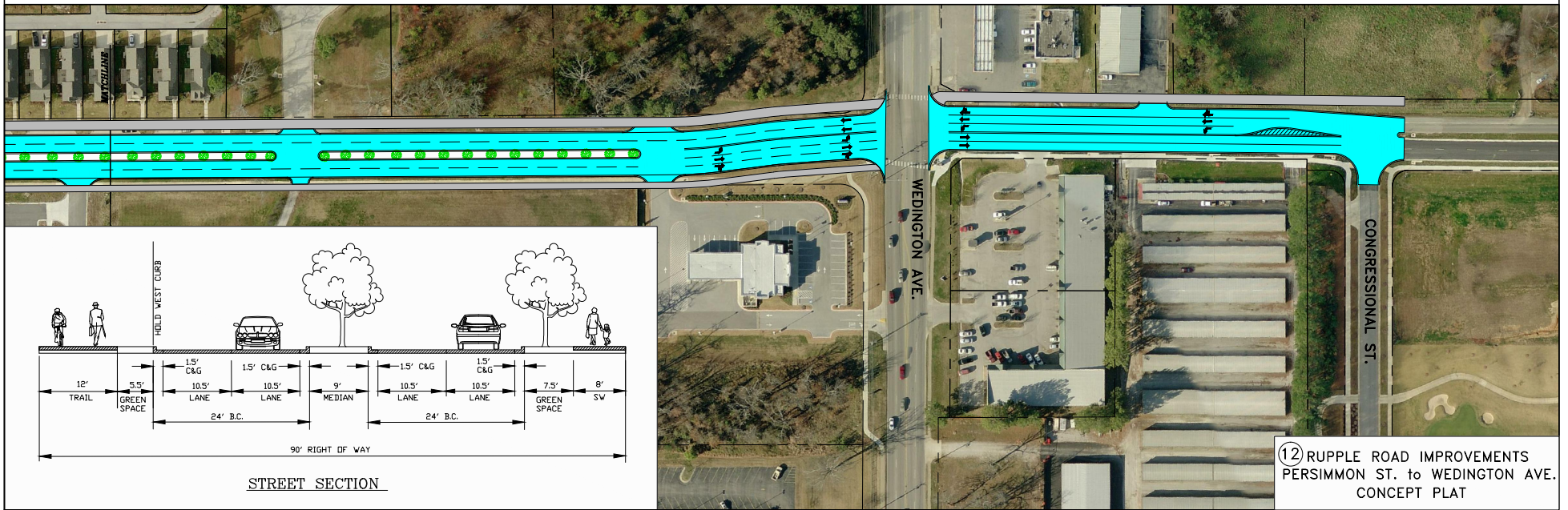
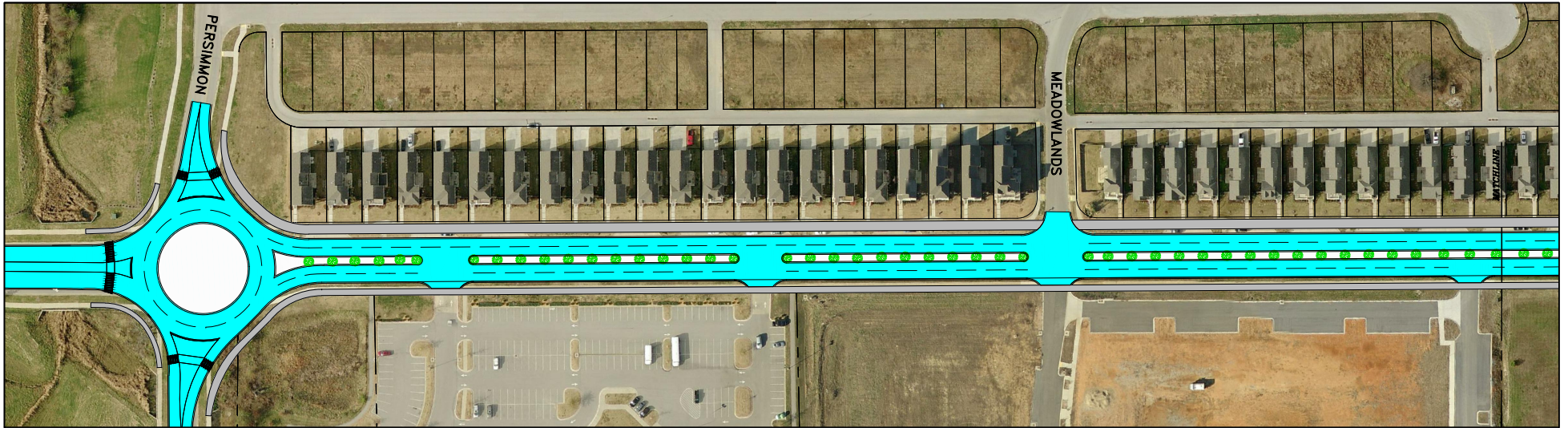


PRINCIPAL ARTERIAL PARKWAY

**Project Summary**

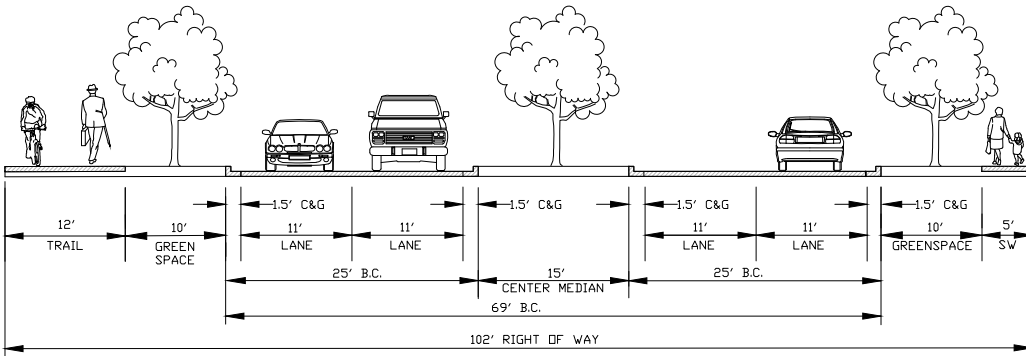
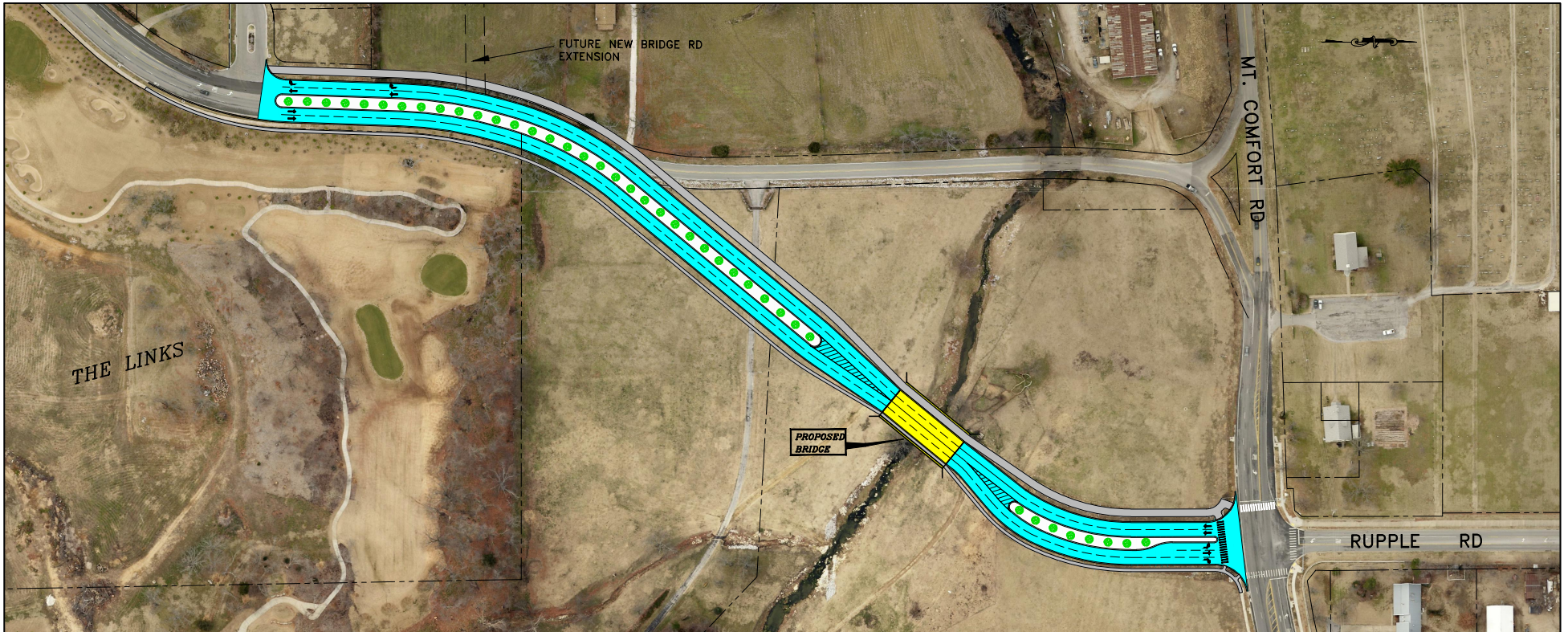
- Extension of Ruppel Road as a 4-lane boulevard from south of Owl Creek School to Martin Luther King Blvd.
- Total project budget: \$8.155 million
- Construction scheduled for 2014.

④ RUPPEL ROAD IMPROVEMENTS  
MARTIN LUTHER KING BLVD.  
TO PERSIMMON ST.  
CONCEPT PLAT



STREET SECTION

12 RUPPLE ROAD IMPROVEMENTS  
 PERSIMMON ST. to WEDINGTON AVE.  
 CONCEPT PLAT



PRINCIPAL ARTERIAL PARKWAY

Project Summary

- Future project to be constructed as funding allows.

⑬ RUPPEL ROAD IMPROVEMENTS  
 STARRY NIGHT VIEW TO MT COMFORT RD  
 CONCEPT PLAT