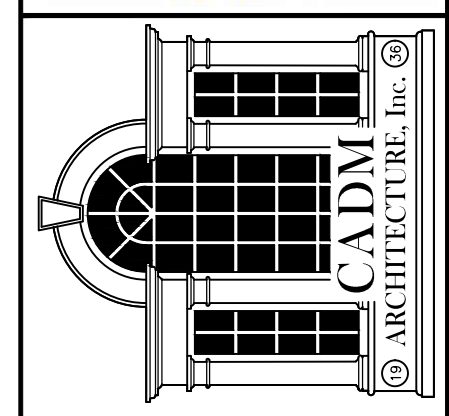


EQUIPMENT/FURNISHING SCHEDULE

- ① → FLUID POWER TRAINER (AMATROL)
- ② → HYDRAULIC TRAINER
- ③ → PNEUMATIC TRAINER (TEL-A-TRAIN)
- ④ → PNEUMATIC TRAINER (HANKISON)
- ⑤ → LUBRICATION DRIVE TRAINER
- ⑥ → MOTOR PUMP TRAINER
- ⑦ → SMALL MOTOR TRAINER TABLE
- ⑧ → HYDRAULIC PUMP/MOTOR/TANK TRAINER
- ⑨ → MOTOR TRAINER
- ⑩ → PRECISION MEASURING INSTRUMENT STORAGE CABINET
- ⑪ → MOTOR CONTROLS TRAINER
- ⑫ → PLC UNIT
- ⑬ → H.O.T.S. UNIT
- ⑭ → CENTRIFUGAL PUMP TRAINER
- ⑮ → MOTOR PUMP TRAINER
- ⑯ → DISTILLATION TRAINER
- ⑰ → ACRYLIC HEAT EXCHANGER
- ⑱ → COOLING TOWER TRAINER
- ⑲ → FLAMMABLE LIQUID STORAGE CABINET
- ⑳ → H.O.T.S. CONTROL MONITORS
- ㉑ → DOWNDRAFT WELDING BOOTH
- ㉒ → TIG WELDER
- ㉓ → MECHATRONICS ASSEMBLY LINE
- ㉔ → ROBOTIC ARM
- ㉕ → PLC TRAINER
- ㉖ → TANKER TRAILER
- ㉗ → STATIC RAIL TANKER
- ㉘ → ELECTRONICS WORKTABLE
- ㉙ → RAILWAY RAILS, 150' LENGTH
- ㉚ → SIMULATION COMPUTER TABLE
- ㉛ → TABLE, 6'-0"x2'-0"
- ㉜ → INSTRUCTOR'S DESK, 7'-0"x3'-0"
- ㉝ → STUDENT TABLE, 5'-0"x2'-6"
- ㉞ → WORK TABLE, 7'-0"x3'-0"
- ㉟ → TABLE, 6'-0"x3'-0"
- ㊱ → PROJECTION SCREEN
- ㊲ → TRUCK LOADING PLATFORM
- ㊳ → 7000 GALLON TANK
- ㊴ → METAL SHELVING
- ㊵ → METAL SHEAR
- ㊶ → CNC PLASMA CUTTER
- ㊷ → BOTTLE CAGE

EQUIPMENT LAYOUT
1/8" = 1'-0"



CADM ARCHITECTURE, Inc.
211 N. Washington, Suite 413
El Dorado, AR 71730
Phone (870) 863-7867
Fax (870) 863-4967
mail@cadmarchitects.com

and
929 North Veterans, 71733
El Dorado, AR 71730
Phone (870) 234-7008
FL CAD# AA-26000814

SOUTH ARKANSAS COMMUNITY COLLEGE
ADVANCED MANUFACTURING TRAINING CENTER
EL DORADO, ARKANSAS

PROJECT: 1460	REVISED:
DATE: 10-12-16	
DNW BY: ALT	
SHEET: 7 OF 41	

