



**City Council Transportation Committee**

September 25, 2018

5:30 pm or Immediately following City Council Agenda Session  
City Hall Room 326

**Members:** Matthew Petty, Chairman; Adella Gray, Kyle Smith, Justin Tennant

**City Staff:** Chris Brown, City Engineer

1. **Old Business: None**

2. **New Business**

**A. DRAFT TRANSPORTATION BOND PROGRAM:** Presentation of the draft list of transportation and trails priority projects.

3. **Announcements**

Next Meeting October 30, 2018.

4. **Adjourn**



**TO:** City Council Transportation Committee

**THRU:** Mayor Jordan  
Don Marr, Chief of Staff  
Garner Stoll, Development Services Director

**FROM:** Chris Brown, City Engineer

**DATE:** September 20, 2018

**SUBJECT: 2019 Bond Program-Draft Transportation Project Priorities**

---

Attached for Transportation Committee review is information on transportation project priorities to be considered for inclusion in the proposed 2019 bond program. The packet includes:

1. Summary priority sheet for on street projects, that includes top priorities and secondary priorities. The list of top priorities equals \$70 million, the expected available funding from the bond issue. Secondary priority projects are additional projects that could be completed if anticipated grant funding is realized. Note that the secondary priority list includes an unallocated amount of \$7.3 million could be used as contingency for projects that cost more than estimated, to respond to cost sharing opportunities, or for additional project priorities.
2. Project scoring sheets for corridors, new locations, intersections, and on-street bicycle facilities. The scoring mechanism was established during the Mobility Plan development, and reflects the community values what were identified during the planning process.
3. Maps showing:
  - a. All projects considered and scored
  - b. Priority projects, based on project scoring and other factors as summarized on the priority list.

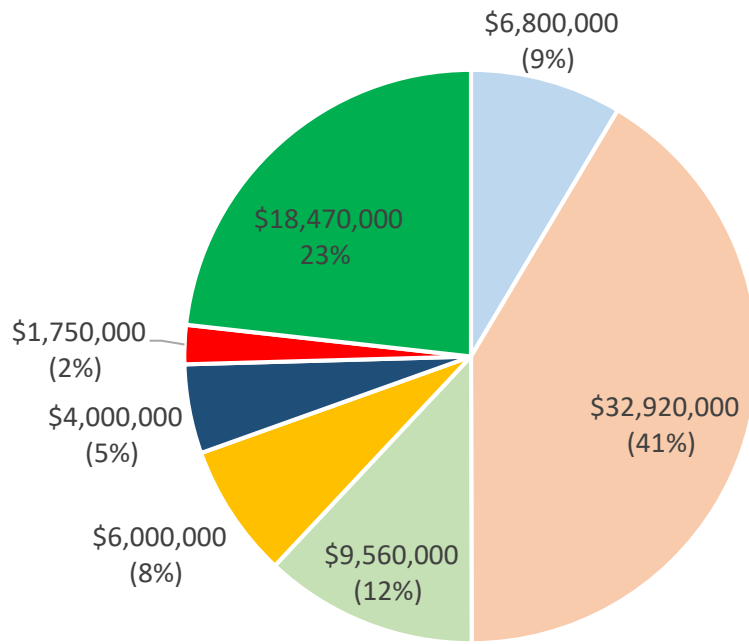
The total of all projects, including secondary priority projects, and assuming grant funding of \$16.8 million, is \$86.8 million. The chart following this page shows the breakdown by project type.

As noted, these priorities are in draft form, and are based on staff interpretation of the public input received during the transportation planning process that guided the Mobility Plan. Staff requests comment and guidance from the Committee in developing the final plan.

**Attachments:**

Summary Priority Spreadsheet-On Street Projects  
Project Scoring Sheets for On Street Projects  
Priority Maps

TOTALS  
BY PROJECT TYPE



- On-Street Bike Facilities
- Corridor Improvements
- Intersection/Signalization
- System Maintenance
- Sidewalk/Streetscape
- Transit
- New Location

**City of Fayetteville**  
**2019 Bond Program**  
**Draft List of Transportation Projects**

**A: Top Priorities**

Project Name	Ward	Type/Mode	Est. Cost	Anticipated Grant	City Cost	Reason For Priority	
Maple Street Cycle Track	2	RRG/Gregg Ave. to Stadium Dr.	Bike/Pedestrian Improvements	\$ 4,000,000	\$ 3,000,000	\$ 1,000,000	Priority Score; Funding Partners
Hwy 62/I-49 Int. Bike/Ped Connections	1	Tsa La Gi Trail to One Mile Road	Bike/Pedestrian Improvements	\$ 2,000,000	\$ 1,000,000	\$ 1,000,000	Priority Score; Funding Partners; Response to ArDOT Project
Old Wire Road Cycle Track (Extension)	3	Gulley Park to Rolling Hills	Bike/Pedestrian Improvements	\$ 800,000	\$ 400,000	\$ 400,000	Priority Score; Funding Partner
Highway 112 (Howard Nickell Rd.)	4	Howard Nickell Rd. to Van Asche	Corridor Improvements	\$ 4,700,000	\$ 4,230,000	\$ 470,000	ArDOT Funding Opportunity
Archibald Yell Blvd. Safety Improvements	1/2	MLK Blvd. to Rock St.	Corridor Improvements	\$ 700,000	\$ -	\$ 700,000	Priority Score
Rolling Hills Improvements	3	Appleby-Old Missouri Road	Corridor Improvements	\$ 3,500,000	\$ -	\$ 3,500,000	Priority Score
Zion Road Improvements	3	Vantage-Crossover	Corridor Improvements	\$ 4,900,000	\$ -	\$ 4,900,000	Priority Score; Holdover from 2006 Bond Program
Porter Road/Deane St./Sycamore St. Corridor	2	Mt. Comfort-College Ave.	Corridor Improvements	\$ 4,200,000	\$ 1,050,000	\$ 3,150,000	Priority Score; Funding Partners
Highway 71B Corridor	1/2/3	Cato Springs Rd. to Zion Road	Corridor Improvements	\$ 10,000,000	\$ -	\$ 10,000,000	Priority Score (Placeholder amount pending Study completion)
North/Mission Blvd. Corridor	2/3	Garland Ave. to Old Wire Rd.	Corridor Improvements	\$ 3,420,000	\$ -	\$ 3,420,000	Priority Score
Other Signalization (4-5 Locations TBD)	1/2/3/4	From List Above-Actual TBD	Int./Signalization	\$ 1,000,000	\$ -	\$ 1,000,000	TBD based on scoring, funding, and approval by ArDOT
Millsap St/College Ave Intersection Impts	3	College Ave/Millsap St.	Intersection Impts.	\$ 1,200,000	\$ -	\$ 1,200,000	Priority Score
15th/Razorback Intersection	1	15th St. and Razorback Road	Intersection Impts.	\$ 1,100,000	\$ -	\$ 1,100,000	Priority Score
Hwy 112/Howard Nickell Road Improvements	4	112/Howard Nickell	Intersection Impts.	\$ 4,100,000	\$ 3,280,000	\$ 820,000	Current Federal Aid Project
Shiloh Dr./Fulbright Expressway Intersection	3	Shiloh Drive and Fulbright Expwy	Intersection Impts.	\$ 860,000	\$ -	\$ 860,000	Priority Score
Center/Harmon Intersection	2	Center and Harmon	Intersection Impts.	\$ 1,300,000	\$ -	\$ 1,300,000	Priority Score
Steamboat/Dorothy Jeanne St. Connection	4	Steamboat to Dorothy Jeanne	New Location	\$ 670,000	\$ -	\$ 670,000	Necessary to Coordinate with Wedington Interchange Project
Rupple Road Extension	4	Tanyard Drive to Weir Road	New Location	\$ 5,000,000	\$ -	\$ 5,000,000	Final Missing Link of Arterial Loop
Sain Street Extension	3	Front to Joyce	New Location	\$ 4,800,000	\$ 3,840,000	\$ 960,000	Priority Score; Current Federal Aid Project
Signal Hardware/Software Upgrades	1/2/3/4	Citywide	Maintenance	\$ 1,000,000	\$ -	\$ 1,000,000	Allows for remote connections; more options for ped/bike phases
Pavement Maintenance/Overlays	1/2/3/4	Citywide	Maintenance	\$ 5,000,000	\$ -	\$ 5,000,000	Mobility Plan identified maintenance as a priority
Downtown Sidewalk/Walkability Impts.	2	Various in Downtown Area	Sidewalk/ADA Ramp Const./Replacem	\$ 3,000,000	\$ -	\$ 3,000,000	Identified High Priority Area in Mobility Plan
MLK Area Walkability Impts.	1	School Avenue-College Avenue	Sidewalk/ADA Ramp Const./Replacem	\$ 1,000,000	\$ -	\$ 1,000,000	Identified High Priority Area in Mobility Plan
BRT Corridor Improvements	2/3	College Ave. Corridor	Transit Infrastructure	\$ 1,000,000	\$ -	\$ 1,000,000	Improvements Identified in Bus Rapid Transit Study
Transit Route Int./Striping/Stop Amenities	1/2/3/4	Various	Transit Infrastructure	\$ 750,000	\$ -	\$ 750,000	Amenities along BRT and other routes

**TOTALS FOR TOP PRIORITIES \$ 70,000,000 \$ 16,800,000 \$ 53,200,000**

**B. Secondary Priorities**

Shiloh Drive Connection	4	Mt. Comfort-Wedington	New Location	\$ 6,600,000	\$ -	\$ 6,600,000	Priority Score
Extend Wood Ave to 15th St.	1	0	New Location	\$ 1,400,000	\$ -	\$ 1,400,000	Priority Score
Mall Avenue Access Impts	3	Mall Avenue Near Joyce Blvd	Corridor Improvements	\$ 1,500,000	\$ -	\$ 1,500,000	Priority Score; Transit Improvement
Unallocated/Contingency/Cost Shares	1/2/3/4	0	Various	\$ 7,300,000	\$ -	\$ 7,300,000	

**TOTALS FOR SECONDARY PRIORITIES \$ 16,800,000 \$ - \$ 16,800,000**

**GRAND TOTALS \$ 86,800,000 \$ 16,800,000 \$ 70,000,000**

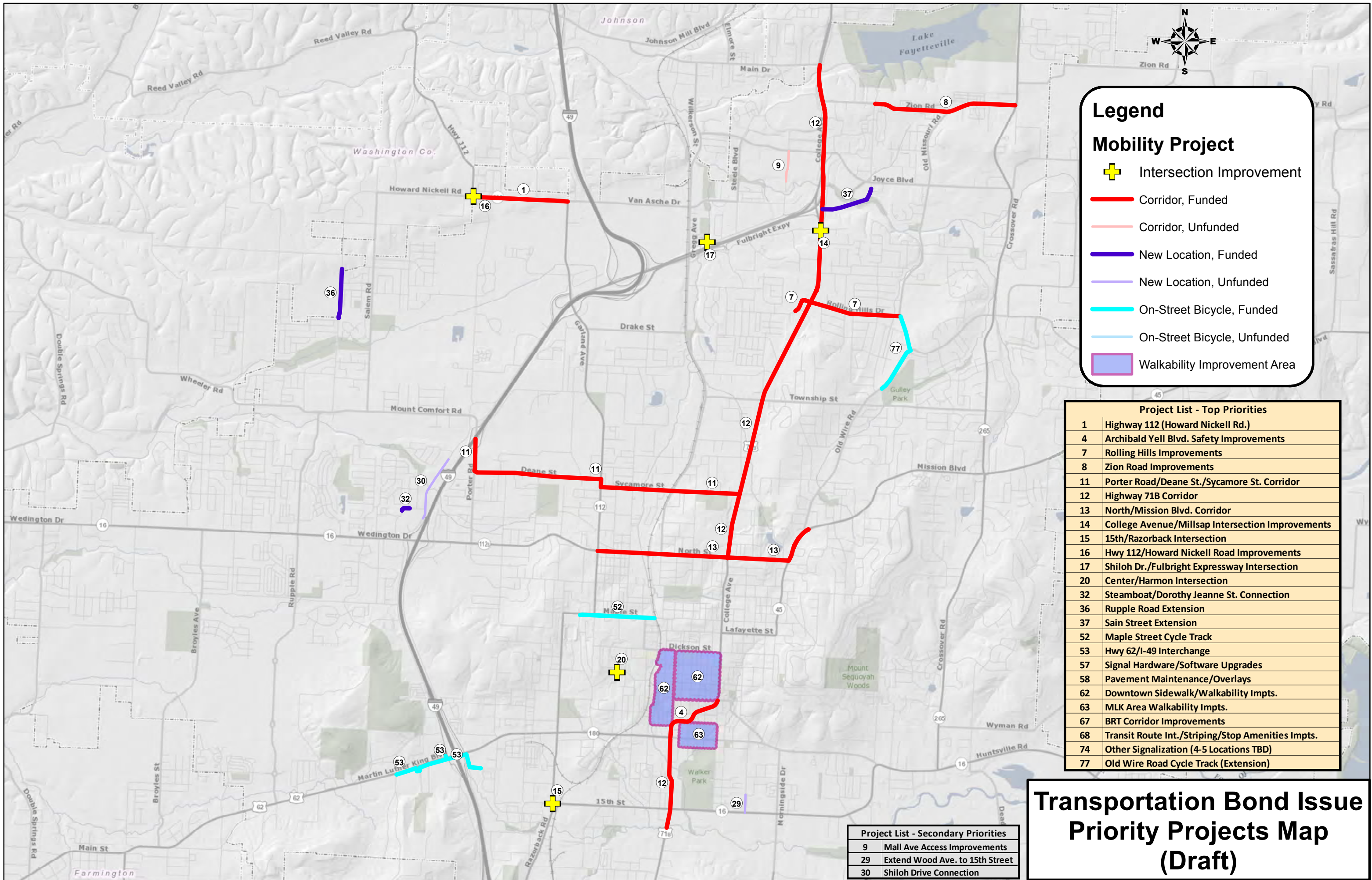
Number	Project Description	Ward	Location	Primary Mode/Function					Health and Safety	Weighting					Economy	Weighting					Equity	Weighting					Deliverability and Funding	Weighting				Cost/Benefit	Total Aggregate Score							
				Driving	Walking	Biking	Transit	Maintenance		High-Injury Corridor/Intersection	Trail Gap Closure (missing/dysfunctional connect)	Sidewalk Gap Closure	Sidewalk Condition (pavement, dimensions, lighting)	Health and Safety Total Score		City/Plan	Future Land-Use Centers and Corridors Imp	Corridor Vehicle Delay	Corridor Person Delay	Economic Development		Economy Total Score	Environment	Tree Canopy on Major Walk/Bike Routes	Stormwater - Mapped Service Request Alignment	Reduced Vehicle Miles Travelled (VMT/capita)		Environment Total Score	Free and Reduced-Price Lunch School Proximity	School-Aged Children in Poverty	School Walk Accessibility Gap Analysis			Transit Access to High-Density Employment	Transit Service and Walk Access to Low-Income	Access for Older Adults or Persons with Disabilities	Equity Total Score	Project Readiness	Funding Partnership Opportunity	Other Repaving
4	Archibald Yell Blvd. Safety Improvements	1/2	MLK Blvd. to Rock St.		x					3	1	4	5	3.3		4	4	4	4	4.0		2	1	1	1.3		5	5	5	5	5	4	4.8		4	2	1	2.3		15.8
11	Porter Road/Deane St./Sycamore St. Corridor	2	Mt. Comfort-College Ave.	x	x	x	x			3	5	5	4	4.3		3	3	3	1	2.5		3	4	2	3.0		0	0	2	3	3	0	1.3		2	3	0	1.7		12.8
12	Highway 71B Corridor	1/2/3	Cato Springs Rd. to Zion Road	x	x	x	x			0	5	5	5	3.8		5	-3	2	5	2.3		5	3	5	4.3		1	1	3	5	5	1	2.7		-3	1	0	-0.7		12.3
13	North/Mission Blvd. Corridor	2/3	Garland Ave. to Old Wire Rd.	x	x	x	x			5	4	4	4	4.3		3	3	3	1	2.5		0	0	0	0.0		0	0	3	2	0	0	0.8		0	0	2	0.7		8.3
8	Zion Road Improvements	3	Vantage-Crossover	x	x	x				0	0	5	5	2.5		4	3	2	1	2.5		2	0	0	0.7		0	0	0	1	1	1	0.5		5	0	0	1.7		7.8
7	Rolling Hills Improvements	3	Appleby-Old Missouri Road	x	x	x				0	0	3	0	0.8		2	2	2	1	1.8		2	5	0	2.3		0	0	5	0	0	0	0.8		3	0	0	1.0		6.7
6	Howard Nickell Road Impts.	4	Rupple Road-Hwy 112	x	x	x				0	3	3	3	2.3		1	5	1	2	2.3		2	0	-4	-0.7		0	0	0	0	0	1	0.2		2	5	0	2.3		6.3
9	Mall Avenue Access Impts	3	Mall Avenue Near Joyce Blvd	x						0	0	4	0	1.0		0	3	3	3	2.3		0	0	0	0.0		0	0	0	4	0	0	0.7		2	0	0	0.7		4.6
10	MLK Blvd. Safety Improvements	1	Stadium Drive-Razorback Road	x	x		x			4	0	0	4	2.0		2	0	2	0	1.0		0	0	0	0.0		0	4	0	0	0	1	0.8		2	0	0	0.7		4.5
1	Highway 112 (Howard Nickell Rd.)	4	Howard Nickell Rd. to Van Asche	x	x	x				0	3	3	3	0.0		1	5	1	2	2.3		2	0	-4	-0.7		0	0	0	0	0	1	0.2		2	5	0	2.3		4.1
2	Rupple Road Widening	4	Weir Rd.-Howard Nickell	x	x	x				0	0	2	1	0.0		0	4	0	0	1.0		1	0	0	0.3		1	0	0	0	0	1	0.3		1	0	0	0.3		2.0
3	Rupple Road Widening	4	Mt. Comfort-Tanyard	x						0	0	0	0	0.0		0	2	-1	0	0.3		0	0	-4	-1.3		-1	-1	-1	0	0	0	-0.5		0	0	0	0.0		-1.6

Number	Project Description	Location	Primary Mode/Function					Health and Safety	Weighting					Economy Total Score	Environment	Weighting					Equity Total Score	Deliverability and Funding	Weighting				Deliverability and Funding Total Score	Cost/Benefit	Total Aggregate Score									
			Driving	Walking	Biking	Transit	Maintenance		High-Injury Corridor/Intersection	Trail Gap Closure (missing/dysfunctional connect	Sidewalk Gap Closure	Sidewalk Condition (pavement, dimensions, ligh	Economy			City/Plan Future Land-Use Centers and Corridors Imp	Corridor Vehicle Delay	Corridor Person Delay	Economic Development	Environment			Tree Canopy on Major Walk/Bike Routes	Stormwater - Mapped Service Request Alignme	Reduced Vehicle Miles Travelled (VMT/capita)	Equity				Free and Reduced-Price Lunch School Proximit	School-Aged Children in Poverty	School Walk Accessibility Gap Analysis	Transit Access to High-Density Employment	Transit Service and Walk Access to Low-Income	Access for Older Adults or Persons with Disabil	Project Readiness	Funding Partnership Opportunity	Other Repaving
37	Sain Street Extension	Front to Joyce						0	0	3	0	0.8		3	4	4	2	2.5		-1	0	1	0.3		0	0	0	5	2	3	1.7		5	5	0	1.7		6.9
29	Extend Wood Ave to 15th St.		x	x	x	x		0	0	1	0	0.3		2	1	3	3	2.3		0	5	1	2.0		0	3	0	3	3	5	2.3		0	0	0	0.0		6.8
30	Shiloh Drive Connection	Mt. Comfort-Wedington	x	x	x	x		3	5	5	0	3.3		3	2	2	4	2.8		1	0	0	0.3		1	1	1	0	0	0	0.5		0	0	0	0.0		6.8
31	Salem Road Extension	Mount Comfort to Fairfax	x	x	x			0	0	4	0	1.0		2	4	2	3	2.8		2	0	1	1.0		1	1	1	0	0	0	0.5		0	0	0	0.0		5.3
33	Longview Extension	West of Plainview Ave.						0	0	3	0	0.8		1	2	2	4	2.3		0	0	1	0.3		0	3	0	0	0	3	1.0		1	0	0	0.3		4.7
32	Steamboat/Dorothy Jeanne St. Connection	Steamboat to Dorothy Jeanne	x	x	x			0	0	5	0	1.3		4	1	1	2	2.0		0	0	1	0.3		0	0	0	0	0	2	0.3		1	0	0	0.3		4.3
34	Plainview Ave Extension	South to Fiesta Square	x	x	x			0	1	1	0	0.5		2	1	1	4	2.0		1	0	1	0.7		0	3	0	0	0	3	1.0		-1	1	0	0.0		4.2
69	15th St Ext.-Shiloh to Farmer's Drive	S. of MLK-Shiloh to WM Entrance						2	0	0	0	0.5		2	2	2	4	2.0		0	0	0	0.0		1	1	0	3	3	0	1.2					0.0		3.7
35	Plainview/Whole Foods connection	Plainview to Whole Foods	x	x				0	0	2	0	0.5		1	1	1	4	1.8		0	0	0	0.0		0	2	0	0	0	1	0.5		2	0	0	0.7		3.4
36	Rupple Road Extension	Tanyard Drive to Weir Road	x	x	x	x		0	2	2	0	1.0		2	2	0	2	1.5		2	0	-3	-0.3		0	0	0	0	0	0	0.0		0	2	0	0.7		2.8

Number	Project Description	Location	Primary Mode/Function					Health and Safety	Weighting					Economy	Environment	Weighting					Equity	Deliverability and Funding	Weighting			Cost/Benefit	Total Aggregate Score										
			Driving	Walking	Biking	Transit	Maintenance		High-Injury Corridor/Intersection	Trail Gap Closure (missing/dysfunctional connection)	Sidewalk Gap Closure	Sidewalk Condition (pavement, dimensions, lighting)	Health and Safety Total Score			CityPlan Future Land-Use Centers and Corridors Implementation	Corridor Vehicle Delay	Corridor Person Delay	Economic Development	Economy Total Score			Tree Canopy on Major Walk/Bike Routes	Stormwater - Mapped Service Request Alignment	Reduced Vehicle Miles Travelled (VMT/capita)			Environment Total Score	Free and Reduced-Price Lunch School Proximity	School-Aged Children in Poverty	School Walk Accessibility Gap Analysis	Transit Access to High-Density Employment	Transit Service and Walk Access to Low-Income Populations	Access for Older Adults or Persons with Disabilities	Equity Total Score	Project Readiness	Funding Partnership Opportunity
14	Millsap St/College Ave Intersection Impts	College Ave/Millsap St.	x	x		x		5	3	5	3	4.0		3	4	4	3	3.5		0	0	0	0.0		0	2	0	5	5	1	2.2		1	1	0	0.7	10.3
15	15th/Razorback Intersection	15th St. and Razorback Road	x	x		x		3	-1	3	3	2.0		-2	3	5	0	1.5		5	2	-1	2.0		3	-3	4	0	5	1	1.7		4	4	-2	2.0	9.2
20	Center/Harmon Intersection	Center and Harmon	x	x		x		0	4	4	4	3.0		0	3	3	0	1.5		0	0	0	0.0		0	3	2	1	0	1	1.2		2	2	1	1.7	7.3
16	Hwy 112/Howard Nickell Road Improvements	112/Howard Nickell	x					0	3	3	3	2.3		1	5	1	2	2.3		2	0	-4	-0.7		0	1	0	0	0	1	0.3		4	5	0	3.0	7.2
21	Morningside Drive Signalization	Morninside/Huntsville	x	x				0	3	3	1	1.8		1	2	2	1	1.5		0	0	-1	-0.3		0	2	0	2	2	2	1.3		3	2	0	1.7	5.9
22	Beechwood/MLK Signalization	Beechwood/MLK Intersection	x	x				0	0	5	4	2.3		1	0	1	2	1.0		0	0	2	0.7		0	1	1	4	4	1	1.8		0	0	0	0.0	5.8
17	Shiloh Dr./Fulbright Expressway Intersection	Shiloh Drive and Fulbright Expwy	x					2	0	5	0	1.8		4	4	0	2	2.5		0	0	0	0.0		0	0	0	1	1	1	0.5		0	0	0	0.0	4.8
24	Wedington Rd./Porter Road Signaliation	Wedington/Porter	x	x		x		0	0	4	4	2.0		1	-2	2	0	0.3		0	0	0	0.0		4	4	2	0	3	2	2.5		0	0	0	0.0	4.8
23	Wedington/Golf Club Drive Signalization	Wedington and Golf Club Dr.	x	x		x		2	0	4	1	1.8		3	0	1	3	1.8		0	0	1	0.3		1	1	1	0	0	1	0.7		0	0	0	0.0	4.5
25	Poplar Street Signalization	Poplar/College Avenue	x	x				0	2	1	0	0.8		2	1	1	4	2.0		0	0	1	0.3		0	2	1	0	0	2	0.8		0	0	0	0.0	3.9
18	Shiloh Drive/Steele Blvd. Intersection Improverment	Shiloh Drive/Steele Blvd Int.	x					3	0	0	1	1.0		2	3	0	2	1.8		0	0	0	0.0		0	0	0	0	0	0	0.0		1	0	0	0.3	3.1
19	Gregg Ave-Left turn lanes at Sycamore and Poplar	Sycamore and Poplar	x					0	0	0	0	0.0		0	3	3	0	1.5		0	0	0	0.0		0	0	0	0	0	0	0.0		3	0	0	1.0	2.5
26	Spring Street and College Ave. Signalization	Spring/Collge						2	0	3	1	1.5		3	-2	2	1	1.0		0	0	0	0.0		1	1	1	0	0	1	0.7		0	0	-2	-0.7	2.5
27	Government/MLK Signalization	Government/MLK Intersection						0	0	3	0	0.8		1	-1	0	2	0.5		0	0	1	0.3		0	3	1	2	2	0	1.3		-3	0	0	-1.0	1.9
70	15th Street/Duncan Avenue		x									0.0					0.0					0.0								0.0					0.0	0.0	
71	Mission Blvd/Maple St.		x									0.0					0.0					0.0								0.0			Total	0.0		0.0	
72	Joyce Blvd/Front Street		x									0.0					0.0					0.0								0.0					0.0	0.0	
73	Wal-Mart Drive/Oak Rd./MLK Blvd.		x									0.0					0.0					0.0								0.0					0.0	0.0	
74	Other Signalization (4-5 Locations TBD)	From List Above-Actual TBD	x									0.0					0.0					0.0								0.0					0.0	0.0	
28	River Meadows Dr. Signalization	River Meadows and Hwy 16	x					0	0	0	0	0.0		0	-3	0	1	-0.5		0	0	0	0.0		0	0	0	0	0	0	0.0		0	0	0	0.0	-0.5

Project Description	Ward	LF	Location	Primary Mode/Function					Health and Safety	Health and Safety Total Score	Economy	Weighting				Environment	Weighting				Equity	Weighting					Deliverability and Funding	Weighting				Cost/Benefit	Total Aggregate Score	
				Driving	Walking	Biking	Transit	Maintenance				High-Injury Corridor/Intersection	Trail Gap Closure (missing/dysfunctional connections)	Sidewalk Gap Closure	Sidewalk Condition (pavement, dimensions, lighting)		CityPlan Future Land-Use Centers and Corridors Imp	Corridor Vehicle Delay	Corridor Person Delay	Economic Development		Economy Total Score	Tree Canopy on Major Walk/Bike Routes	Stormwater - Mapped Service Request Alignment	Reduced Vehicle Miles Travelled (VMT/capita)	Environment Total Score		Free and Reduced-Price Lunch School Proximity	School-Aged Children in Poverty	School Walk Accessibility Gap Analysis	Transit Access to High-Density Employment			Transit Service and Walk Access to Low-Income
Maple Street Cycle Track	2	3220	RRG/Gregg Ave. to Stadium Dr.	x	x				5	4	2	5	0.0	5	0	5	5	3.8	0	5	5	3.3	5	5	0	5	5	1	3.5	5	5	0	3.3	5.3
Spring Street Bikeway	2	2577	West Ave-Downtown Square	x	x				4	2	0	5	0.0	5	0	5	5	3.8	0	5	5	3.3	3	3	1	5	4	5	3.5	3	5	0	2.7	5.3
Hwy 62/I-49 Int. Bike/Ped Connections	1	3500	Tsa La Gi Trail to One Mile Road	x	x				5	4	5	5	0.0	5	0	5	5	3.8	3	0	5	2.7	5	2	5	5	5	4	4.3	2	5	0	2.3	5.3
Mission Blvd. Trail	2/3	5289	Viewpoint to Rush	x	x				5	5	5	5	0.0	5	0	5	5	3.8	0	4	5	3.0	4	2	4	2	0	5	2.8	4	5	0	3.0	5.3
Mission/Lafayette Bicycle Impts	1/2/3	5358	North St. to College Ave.	x	x				5	5	5	5	0.0	5	0	5	5	3.8	2	3	5	3.3	5	2	3	5	0	5	3.3	3	3	0	2.0	5.3
Old Wire Road Cycle Track (Extension)	3	3526	Gulley Park to Rolling Hills	x	x				0	5	5	0	2.5	5	0	5	1	2.8	3	0	5	2.7	1	2	5	0	0	4	2.0	2	5	0	2.3	5.3
Drake Street Cycle Track and Trail	3	4358	College Ave. to Gordon Long Park	x	x				5	5	5	5	0.0	5	0	5	5	3.8	0	0	5	1.7	3	4	3	4	5	5	4.0	2	3	0	1.7	5.3
Centennial Park Connections	1	4622	One Mile and Old Farmington Rd.		x				0	2	2	0	1.0	4	0	5	3	3.0	2	0	2	1.3	5	2	3	2	4	2	3.0	2	5	0	2.3	5.3
Shiloh Trail	1/4	14079	Moore Ln. to MLK (Hwy 62)	x	x				3	3	3	1	2.5	5	0	5	3	3.3	0	0	3	1.0	4	3	3	2	2	3	2.8	2	0	0	0.7	5.3
Ripple Road Trail	4	3600	Wedington to Hamestring Creek	x	x				5	5	5	0	0.0	3	0	5	3	2.8	1	0	4	1.7	4	4	4	2	5	2	3.5	4	2	0	2.0	5.3
Crossover Road (Expand Sidewalk East Side)	3	20554	Hwy 16 to Mission		x				3	0	0	5	2.0	3	0	0	0	0.8	1	0	2	1.0	2	2	0	0	0	4	1.3	1	0	0	0.3	5.4
Crossover Road (Expand Sidewalk West Side)	1	13973	Mission to Lake Fayetteville		x				3	0	0	5	2.0	3	0	0	0	0.8	1	0	2	1.0	1	2	0	0	0	4	1.2	1	0	0	0.3	5.3





### Legend

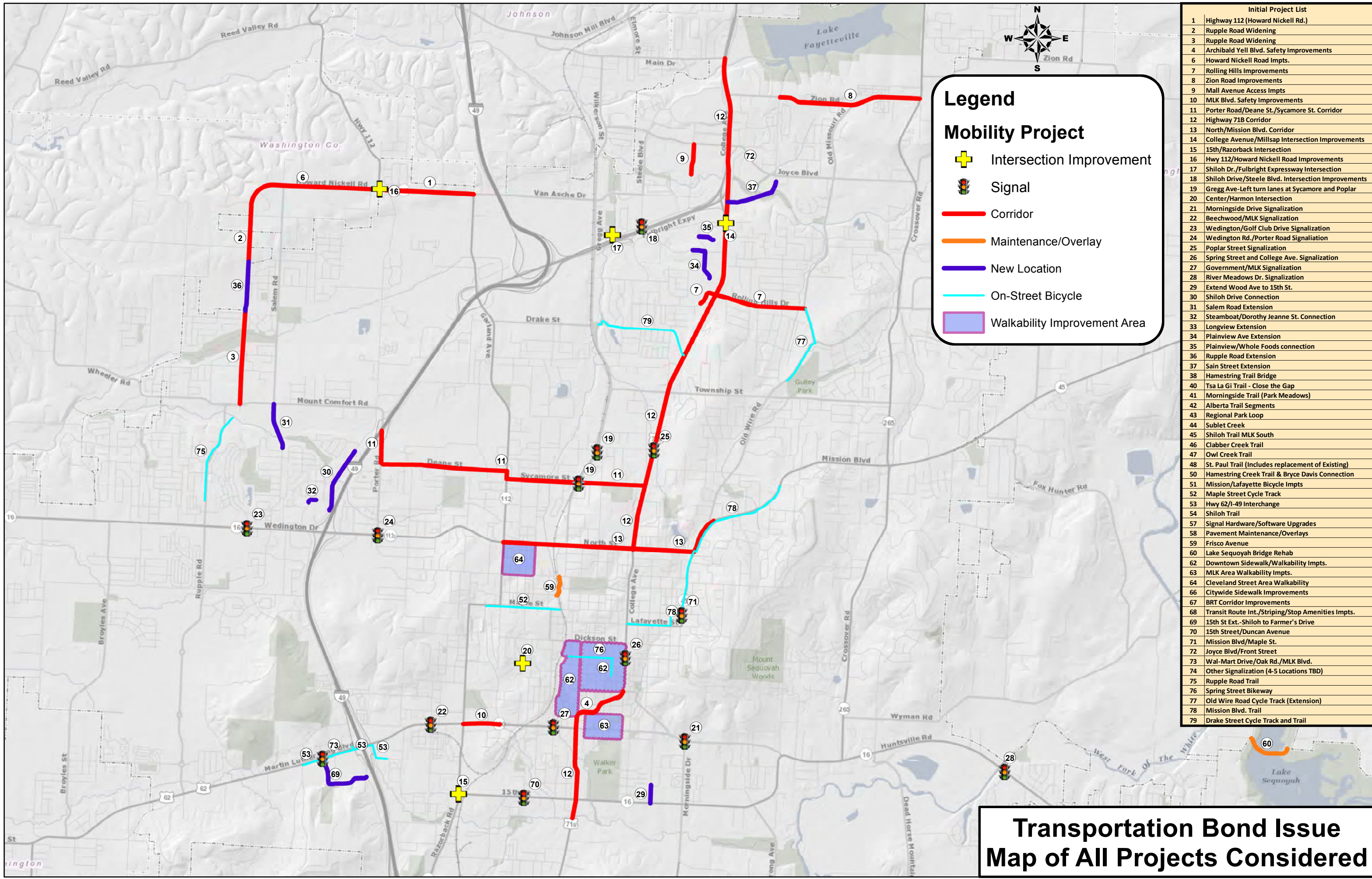
**Mobility Project**

- + Intersection Improvement
- Corridor, Funded
- Corridor, Unfunded
- New Location, Funded
- New Location, Unfunded
- On-Street Bicycle, Funded
- On-Street Bicycle, Unfunded
- ▭ Walkability Improvement Area

Project List - Top Priorities	
1	Highway 112 (Howard Nickell Rd.)
4	Archibald Yell Blvd. Safety Improvements
7	Rolling Hills Improvements
8	Zion Road Improvements
11	Porter Road/Deane St./Sycamore St. Corridor
12	Highway 71B Corridor
13	North/Mission Blvd. Corridor
14	College Avenue/Millsap Intersection Improvements
15	15th/Razorback Intersection
16	Hwy 112/Howard Nickell Road Improvements
17	Shiloh Dr./Fulbright Expressway Intersection
20	Center/Harmon Intersection
32	Steamboat/Dorothy Jeanne St. Connection
36	Ruppel Road Extension
37	Sain Street Extension
52	Maple Street Cycle Track
53	Hwy 62/I-49 Interchange
57	Signal Hardware/Software Upgrades
58	Pavement Maintenance/Overlays
62	Downtown Sidewalk/Walkability Impts.
63	MLK Area Walkability Impts.
67	BRT Corridor Improvements
68	Transit Route Int./Striping/Stop Amenities Impts.
74	Other Signalization (4-5 Locations TBD)
77	Old Wire Road Cycle Track (Extension)








Project List - Secondary Priorities	
9	Mall Ave Access Improvements
29	Extend Wood Ave. to 15th Street
30	Shiloh Drive Connection

## Transportation Bond Issue Priority Projects Map (Draft)



### Legend

#### Mobility Project

-  Intersection Improvement
-  Signal
-  Corridor
-  Maintenance/Overlay
-  New Location
-  On-Street Bicycle
-  Walkability Improvement Area

Initial Project List	
1	Highway 112 (Howard Nickell Rd.)
2	Ripple Road Widening
3	Ripple Road Widening
4	Archibald Yell Blvd. Safety Improvements
6	Howard Nickell Road Impts.
7	Rolling Hills Improvements
8	Zion Road Improvements
9	Mall Avenue Access Impts
10	MLK Blvd. Safety Improvements
11	Porter Road/Deane St./Sycamore St. Corridor
12	Highway 71B Corridor
13	North/Mission Blvd. Corridor
14	College Avenue/Millsap Intersection Improvements
15	15th/Razorback Intersection
16	Hwy 112/Howard Nickell Road Improvements
17	Shiloh Dr./Fulbright Expressway Intersection
18	Shiloh Drive/Steele Blvd. Intersection Improvements
19	Gregg Ave-Left turn lanes at Sycamore and Poplar
20	Center/Harmon Intersection
21	Morningside Drive Signalization
22	Beechwood/MLK Signalization
23	Wedington/Golf Club Drive Signalization
24	Wedington Rd./Porter Road Signaliation
25	Poplar Street Signalization
26	Spring Street and College Ave. Signalization
27	Government/MLK Signalization
28	River Meadows Dr. Signalization
29	Extend Wood Ave to 15th St.
30	Shiloh Drive Connection
31	Salem Road Extension
32	Steamboat/Dorothy Jeanne St. Connection
33	Longview Extension
34	Plainview Ave Extension
35	Plainview/Whole Foods connection
36	Ripple Road Extension
37	Sain Street Extension
38	Hamstring Trail Bridge
40	Tsa La Gi Trail - Close the Gap
41	Morningside Trail (Park Meadows)
42	Alberta Trail Segments
43	Regional Park Loop
44	Sublet Creek
45	Shiloh Trail MLK South
46	Clabber Creek Trail
47	Owl Creek Trail
48	St. Paul Trail (Includes replacement of Existing)
50	Hamstring Creek Trail & Bryce Davis Connection
51	Mission/Lafayette Bicycle Impts
52	Maple Street Cycle Track
53	Hwy 62/I-49 Interchange
54	Shiloh Trail
57	Signal Hardware/Software Upgrades
58	Pavement Maintenance/Overlays
59	Frisco Avenue
60	Lake Sequoyah Bridge Rehab
62	Downtown Sidewalk/Walkability Impts.
63	MLK Area Walkability Impts.
64	Cleveland Street Area Walkability
66	Citywide Sidewalk Improvements
67	BRT Corridor Improvements
68	Transit Route Int./Striping/Stop Amenities Impts.
69	15th St Ext.-Shiloh to Farmer's Drive
70	15th Street/Duncan Avenue
71	Mission Blvd/Maple St.
72	Joyce Blvd/Front Street
73	Wal-Mart Drive/Oak Rd./MLK Blvd.
74	Other Signalization (4-5 Locations TBD)
75	Ripple Road Trail
76	Spring Street Bikeway
77	Old Wire Road Cycle Track (Extension)
78	Mission Blvd. Trail
79	Drake Street Cycle Track and Trail

**Transportation Bond Issue  
Map of All Projects Considered**



**TO:** Transportation Committee

**THRU:** Chris Brown, City Engineer

**FROM:** Matt Mihalevich, Trails Coordinator

**DATE:** September 20<sup>th</sup>, 2018

**SUBJECT:** Trail Priority Project Selection for the 2019 Bond Program

---

**BACKGROUND:**

The trail priority projects listed below and in the attached spreadsheet were chosen based on detailed evaluation by a committee of five City staff members using the Mobility Toolkit. This tool developed by the consultants of the Mobility plan uses the six categories of Health & Safety, Economy, Environment, Equity, Deliverability and funding, and Cost Benefit. Each of these categories have specific sub categories including most notably trail gap closure, high-injury corridor, access to schools especially for low income and senior residents, and funding partnership opportunities.

**DISCUSSION:**

Based on this detailed evaluation, the following trail projects received the highest scores and are therefore being recommended for inclusion in the 2019 transportation bond program. The selected projects are also listed on the 5-year trail priority plan that is currently in the process of being finalized by the Active Transportation Advisory Committee.

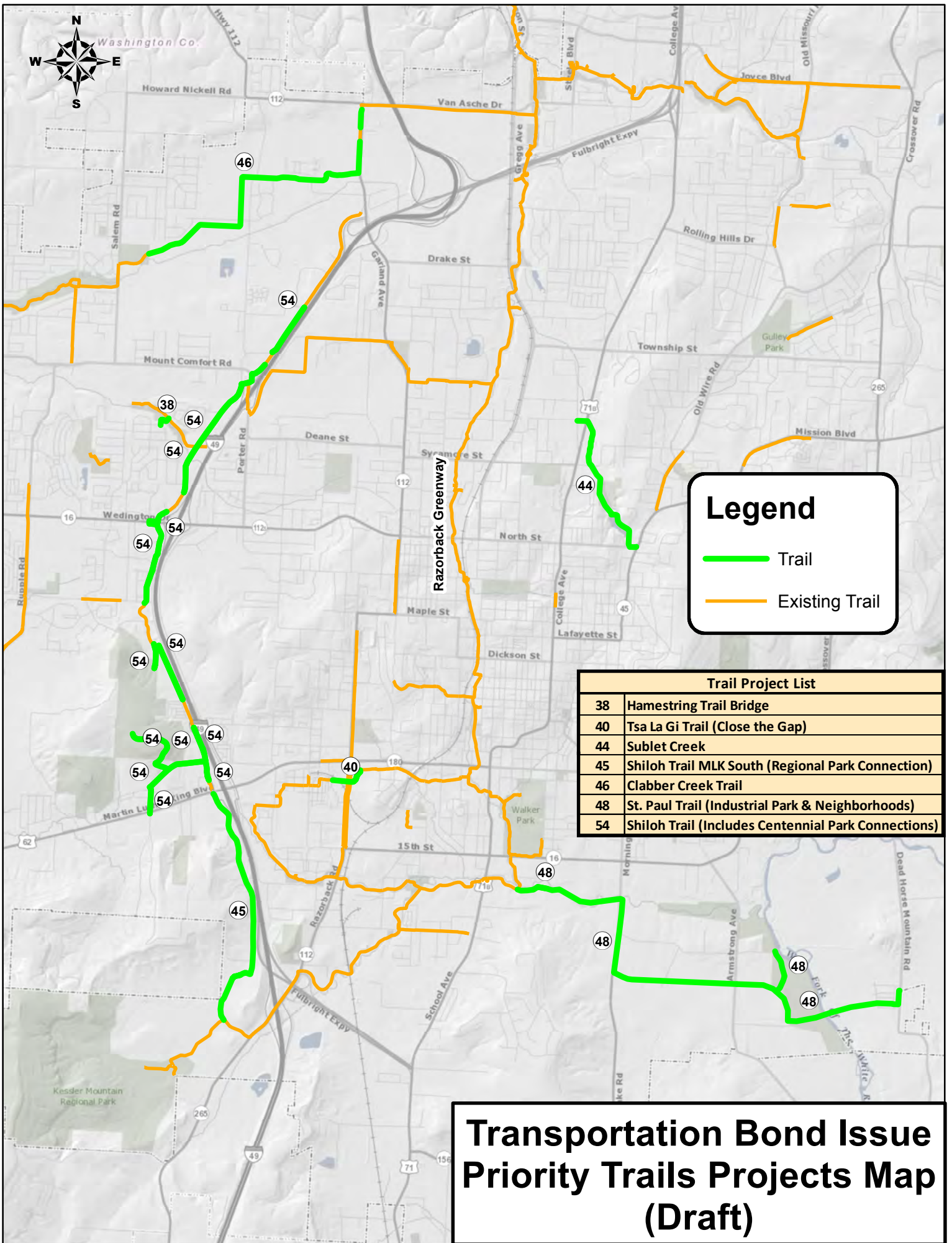
	Trail Project	Location	Score
1	Tsa La Gi – Close the gap	Razorback Road	14.9
2	Sublet Creek Trail	Mission & North to Poplar at College	14.9
3	Shiloh Trail South	MLK south to Regional Park	14.2
4	Hamestrung Trail Bridge	Woodridge Dr.	13.8
5	St. Paul Trail (Industrial Park & Neighborhoods)	Razorback Greenway to Dead Horse Mtn.	12.7
6	Shiloh Trail Mid-section	Moore Ln. to Centennial Park	12.2
7	Shiloh trail (Centennial Park Connections)	Centennial Park to MLK & Old Farmington	12.2
8	Clabber Creek Trail	Holcomb School to Van Asche	11.1

**Attachments:**

- 2019 Bond Program Trail Priority Projects List
- 2019 Bond Program Trail Priority Projects Map

## Trail Priority Projects for the 2019 Bond

Number	Project Description	Ward	LF	Location	Total Aggregate Score	Estimated Cost	Cost	Cumulative Cost	Anticipated Grant Funding	Potential Cost After Grant Funding	Cumulative Cost After Grant Funding
40	Tsa La Gi Trail - Close the Gap	1	1,174	Razorback Road.	14.9	1	\$ 150,000	\$ 150,000	\$ -	\$ 150,000	\$ 150,000
44	Sublet Creek	2	5,665	Mission & North to Poplar	14.9	2	\$ 900,000	\$ 1,050,000	\$ -	\$ 900,000	\$ 1,050,000
45	Shiloh Trail MLK South (Regional Park Connection)	1	8,840	MLK/Hwy 62 to Regional Park	14.2	2	\$ 750,000	\$ 1,800,000		\$ 750,000	\$ 1,800,000
38	Hamestring Trail Bridge	4	480	Woodridge Dr.	13.8	1	\$ 150,000	\$ 1,950,000	\$ 120,000	\$ 30,000	\$ 1,830,000
48	St. Paul Trail (Industrial Park & Neighborhoods)	1	17,939	Razorback Gwy. To Dead House Mtn.	12.7	4	\$ 2,845,000	\$ 4,795,000	\$ -	\$ 2,845,000	\$ 4,675,000
54	Shiloh Trail	4	13063	Moore Ln. to Centennial Park	12.2	3	\$ 1,000,000	\$ 5,795,000	\$ 275,000	\$ 725,000	\$ 5,400,000
54	Shiloh Trail (Centennial Park Connections)	1	4880	Centennial Park to MLK & Old Farmington	12.2	1	\$ 200,000	\$ 5,995,000	\$ 100,000	\$ 100,000	\$ 5,500,000
46	Clabber Creek Trail	4	10,789	Holcomb School to Van Asche	11.1	3	\$ 1,000,000	\$ 6,795,000	\$ -	\$ 1,000,000	\$ 6,500,000



**Legend**

- Trail
- Existing Trail

Trail Project List	
38	Hamestring Trail Bridge
40	Tsa La Gi Trail (Close the Gap)
44	Sublet Creek
45	Shiloh Trail MLK South (Regional Park Connection)
46	Clabber Creek Trail
48	St. Paul Trail (Industrial Park & Neighborhoods)
54	Shiloh Trail (Includes Centennial Park Connections)

**Transportation Bond Issue  
Priority Trails Projects Map  
(Draft)**