

Bond Extension



“Tax-exempt bonds are the primary mechanism through which state and local governments raise capital to finance a wide range of essential public projects”

GFOA.org



2007 Bond Issue – Law Enforcement



2007 Bond Issue – Park Projects

Downtown Activity Center



Austin Baggett Park



2007 Bond Issue – Park Projects

Gilmore Park - Before



Gilmore Park - After



2007 Bond Issue – Park Projects

Lawrence Plaza - Before



Lawrence Plaza - After



2007 Bond Issue – Park Projects

Orchards Park - Before



Orchards Park- After



2007 Bond Issue – Park Projects

Bentonville Community Center



2007 Bond Issue Streets - Central



2007 Bond Issue Streets – I Street



2007 Bond Issue Streets – 8th Street



2007 Bond Issue – Downtown Square

E. Central & SE B - Before



E. Central & SE B - After



City of Bentonville

2021 Bond Extension

- Tuesday, February 9th - Council Votes on Ordinances to Call a Special Election
 - Tuesday, April 13th – Election
 - Extension of an existing 1% (1 penny) Capital Sales Tax
 - 80% pays for debt
 - 20% pays for ongoing capital needs
-

Bond Issuance

- Authorize a bond issue of up to approx. \$266 million
 - \$23,000,000* - Refund existing bond debt + Issuance Cost
 - \$243,000,000 - New Projects + Issuance Cost
- 9 Ballot Questions for our Citizens to vote on
 - 1 ballot authorizes the sales tax extension
 - 1 ballot authorizes the bond refunding
 - 7 ballots are for individual project areas

*Estimated based on projected redemptions and prior issue funds on deposit with the trustee (Debt Service Reserve, Bond Fund and Redemption account balances)

Bond Refunding - Estimated

- Outstanding Bonds today – Total of \$27,200,000*
 - 2009 Series
 - 2010 Series
 - 2017 Series**

* Ballot amount requested is \$23,000,000 which is the current amount outstanding less prior issue funds on deposit with the trustee (Debt Service Reserve, Bond Fund and Redemption account balances)

**Series 2017 will be an advance refund bond

Bond Project Areas

- \$160,000,000 - Street
- \$30,000,000 - Parks and Recreation
- \$18,000,000 - Drainage
- \$6,000,000 - Radio Communication
- \$4,500,000 - Library Expansion
- \$3,500,000 - Fire Training Facility
- \$1,400,000 - Police Training Facility

Street Improvements

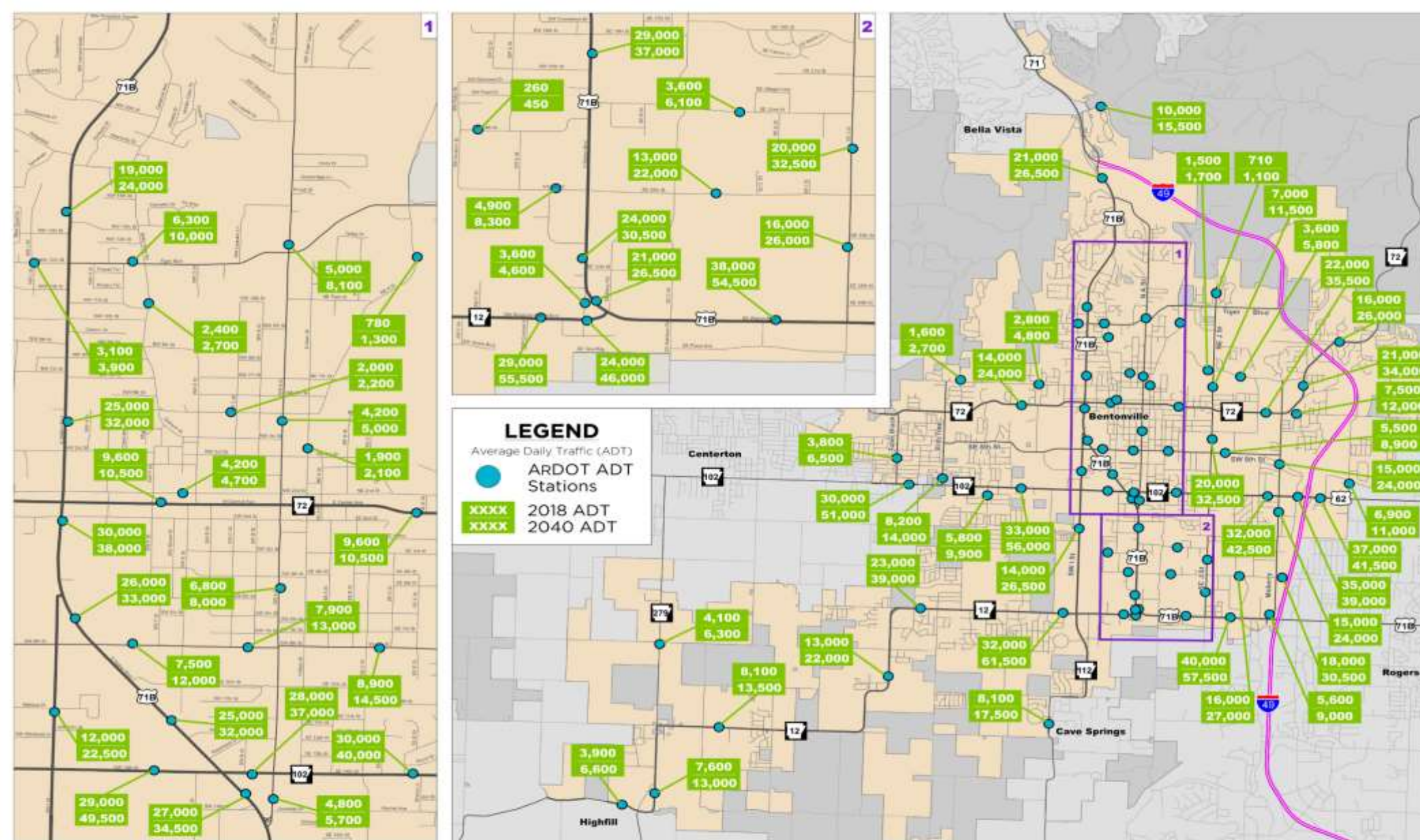


Citywide Growth Rate:

- Current Population Estimate 51,000
- Projected 2040 population 100,000
- Daytime – Pre-covid – Traffic doubled during the Weekday
- Bonds are how we prepare for growth and manage current traffic

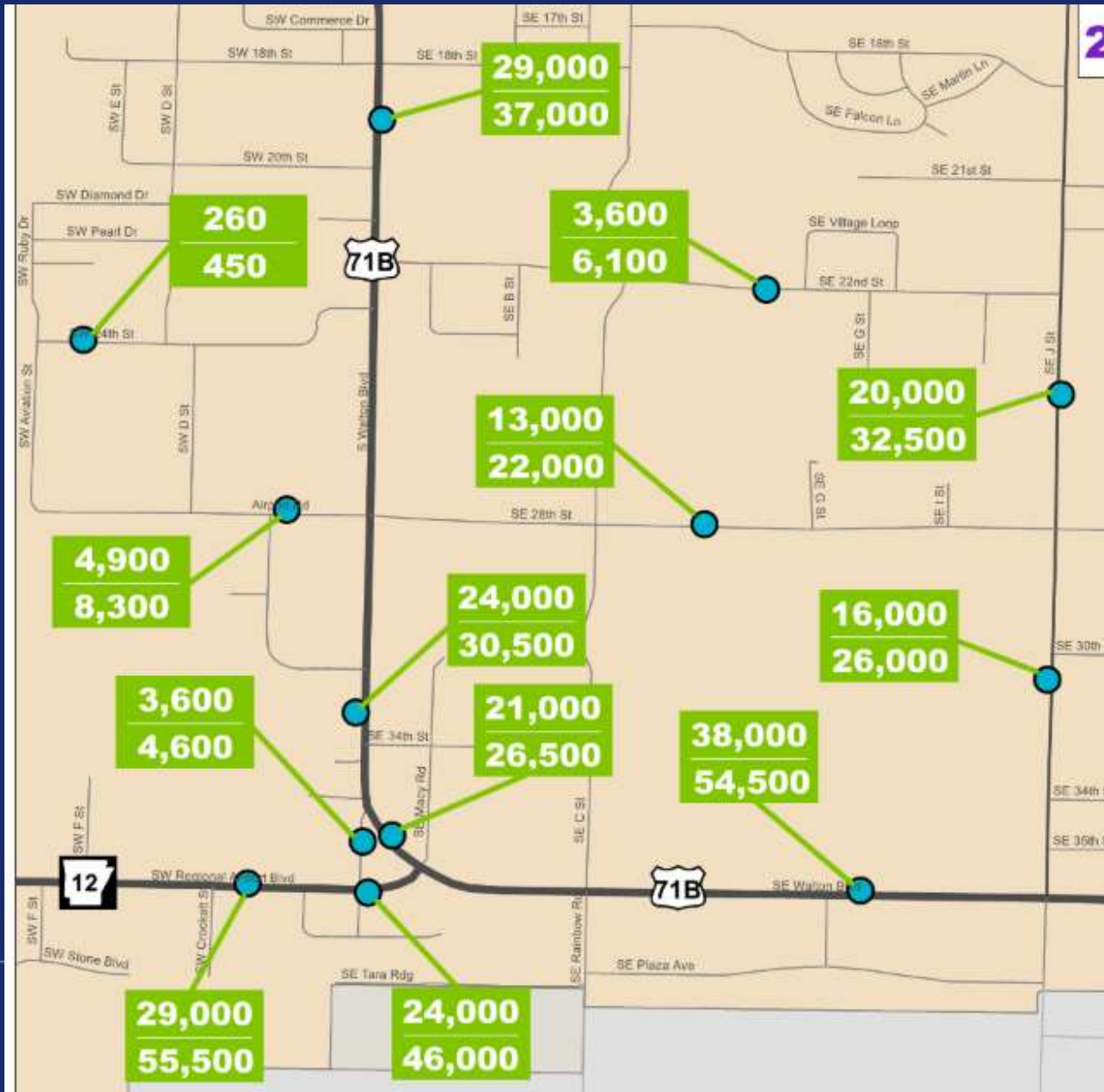


Existing/ 2040 ADT Map



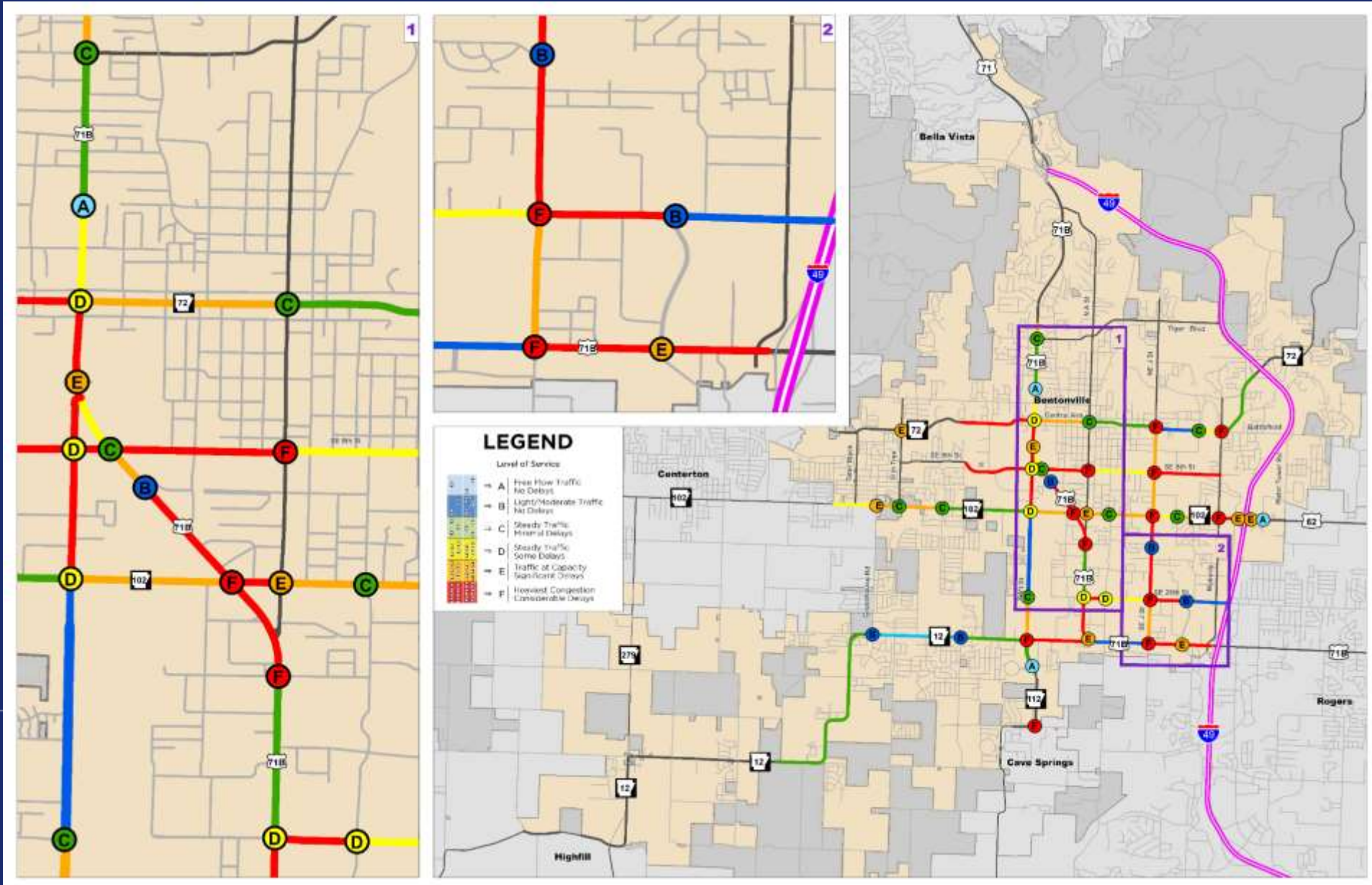
Bentonville Master Street Plan
Average Daily Traffic (ADT)



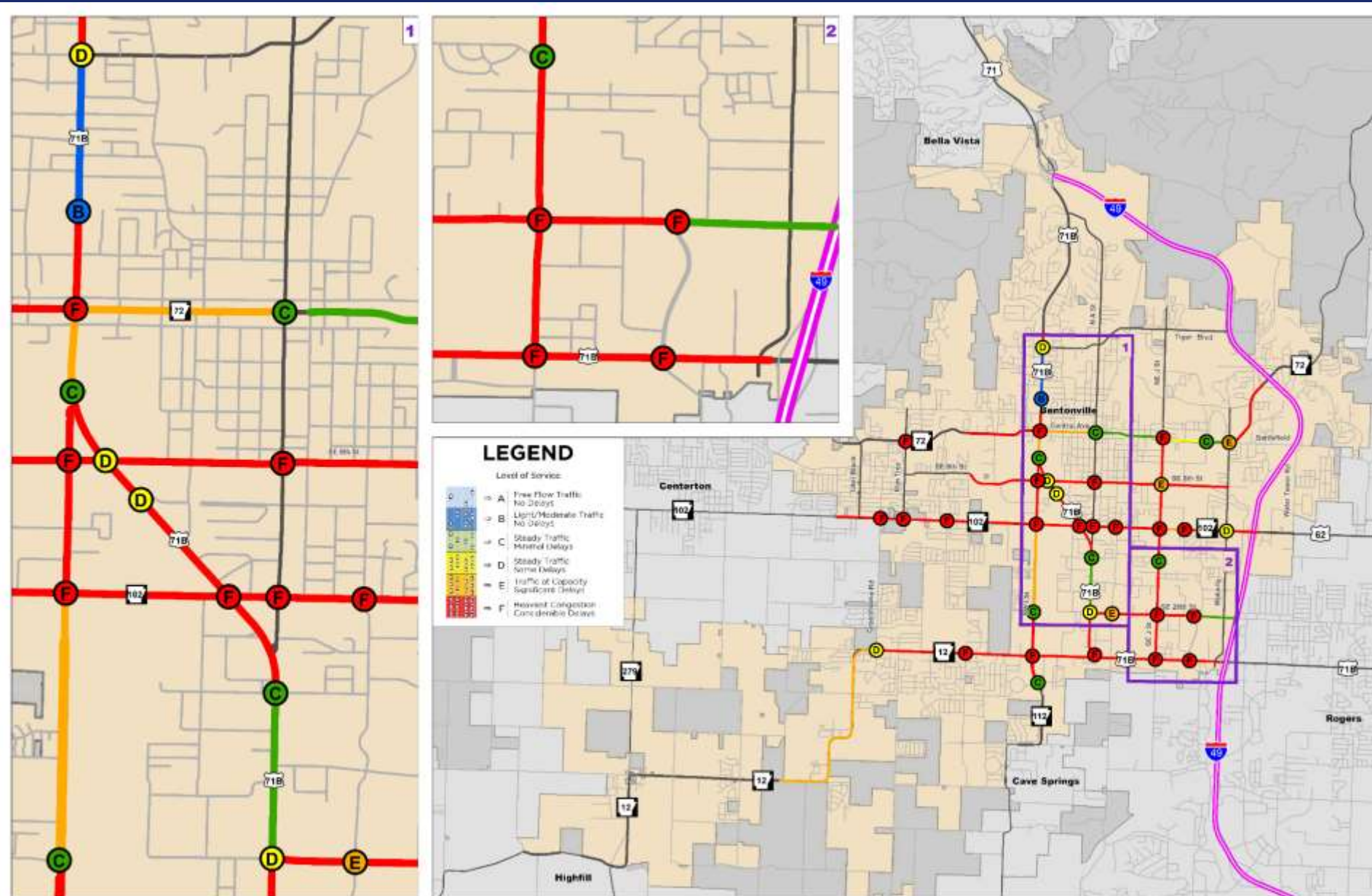


Rainbow Curve Example

Level of Service 2019



Level of Service 2040



Public Input Summary

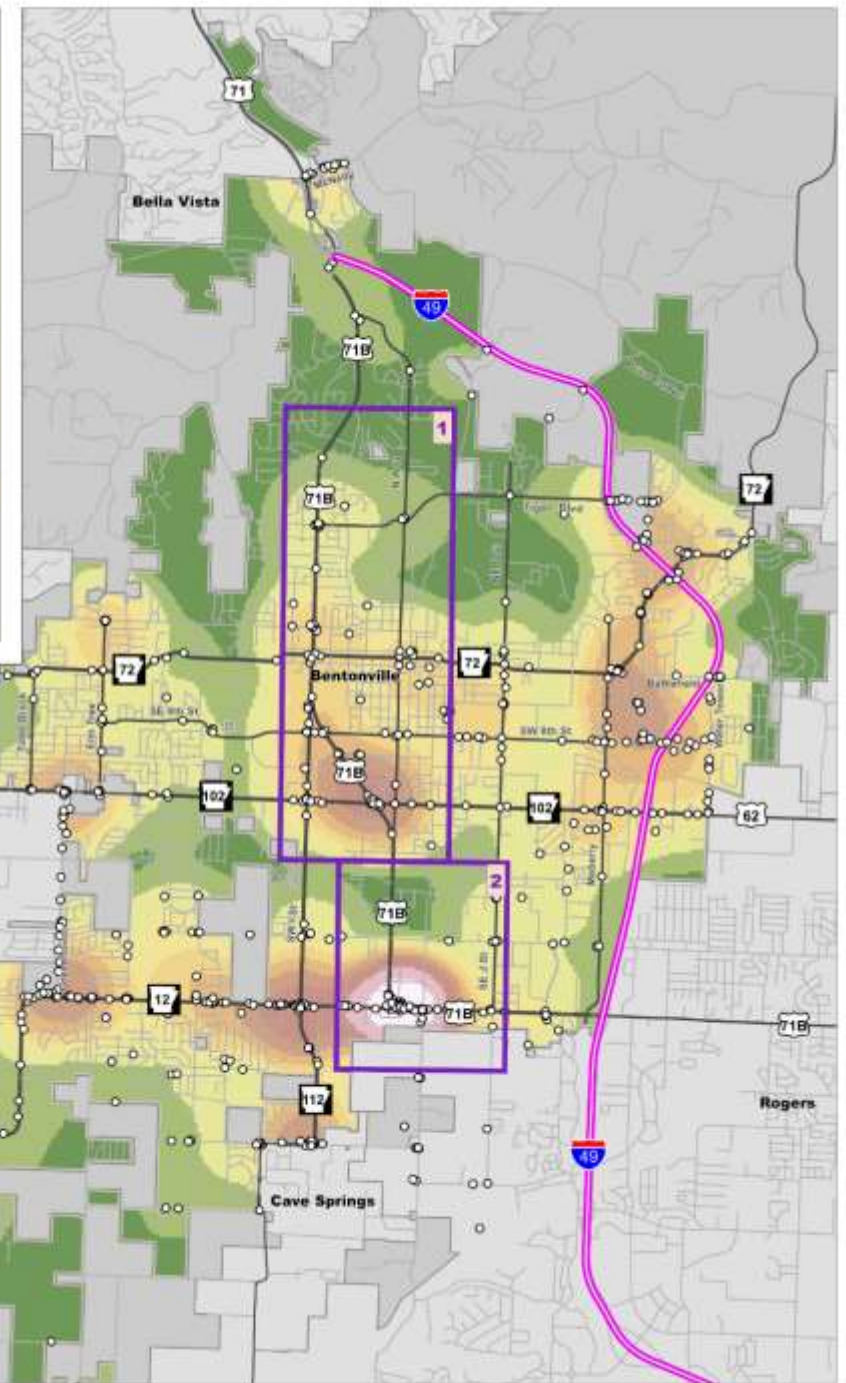
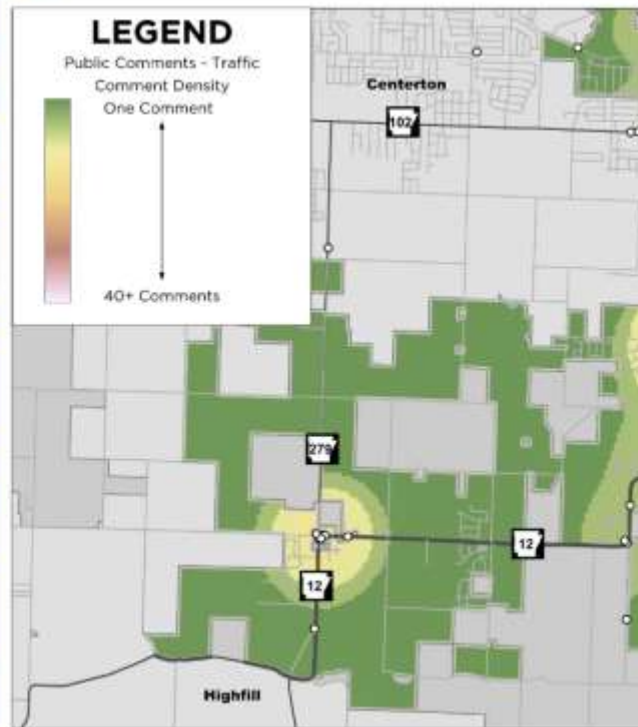
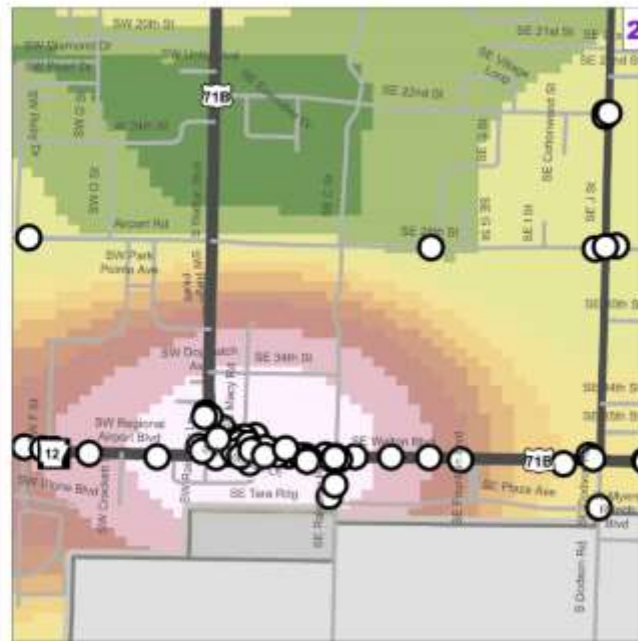
- Public Input Meeting- January 16, 2020
- Public Survey 1- January/February 2020
- Public Survey 2- March/April 2020

TOTAL RESPONSES – 2,350

INTERACTIVE MAP COMMENTS – 1,104

- 765 Traffic
- 198 Pedestrian
- 98 Bicycle
- 43 Public Transit





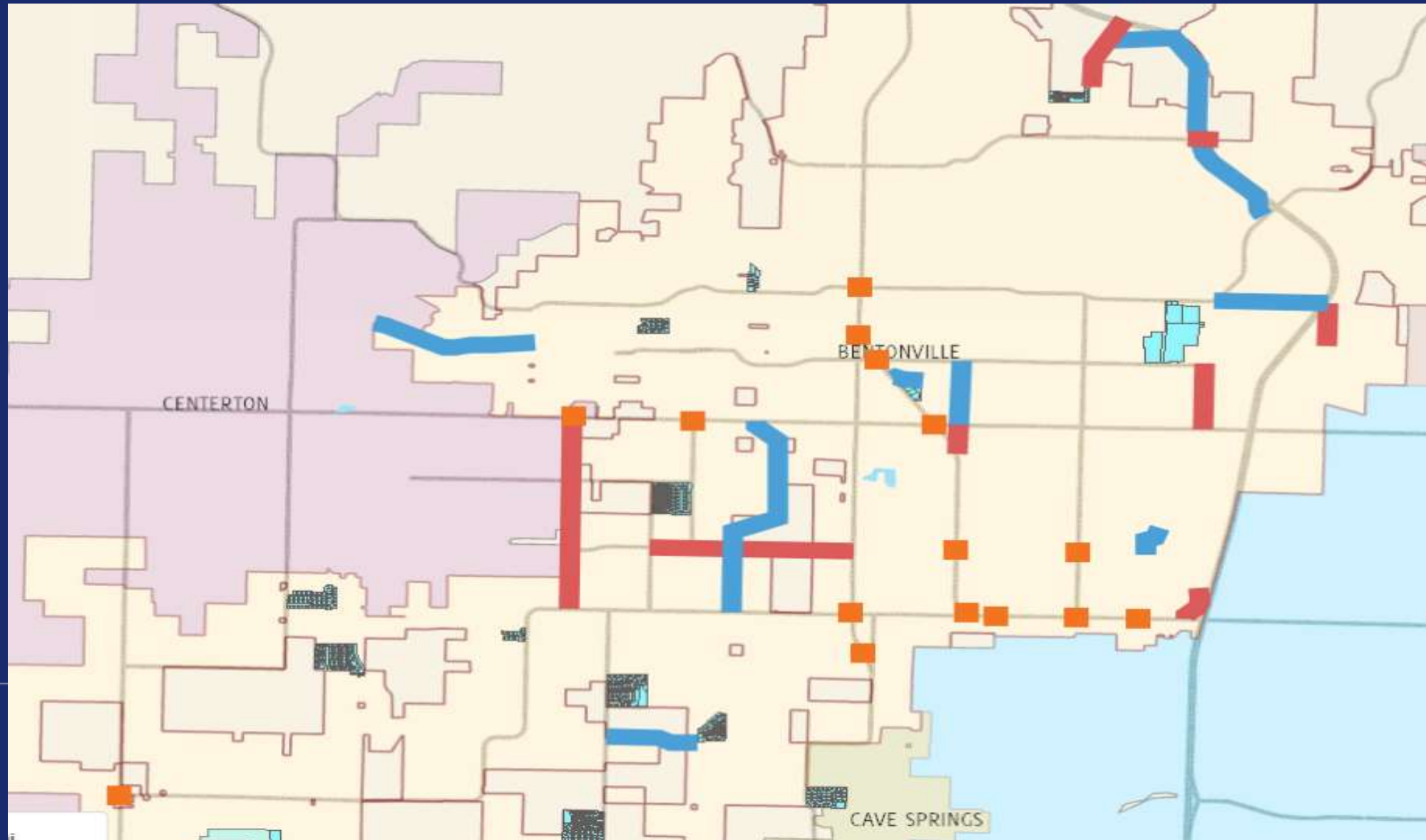


How do we Improve

- **Arterial Streets**
- **Collector Streets**
- **Intersection Improvements**

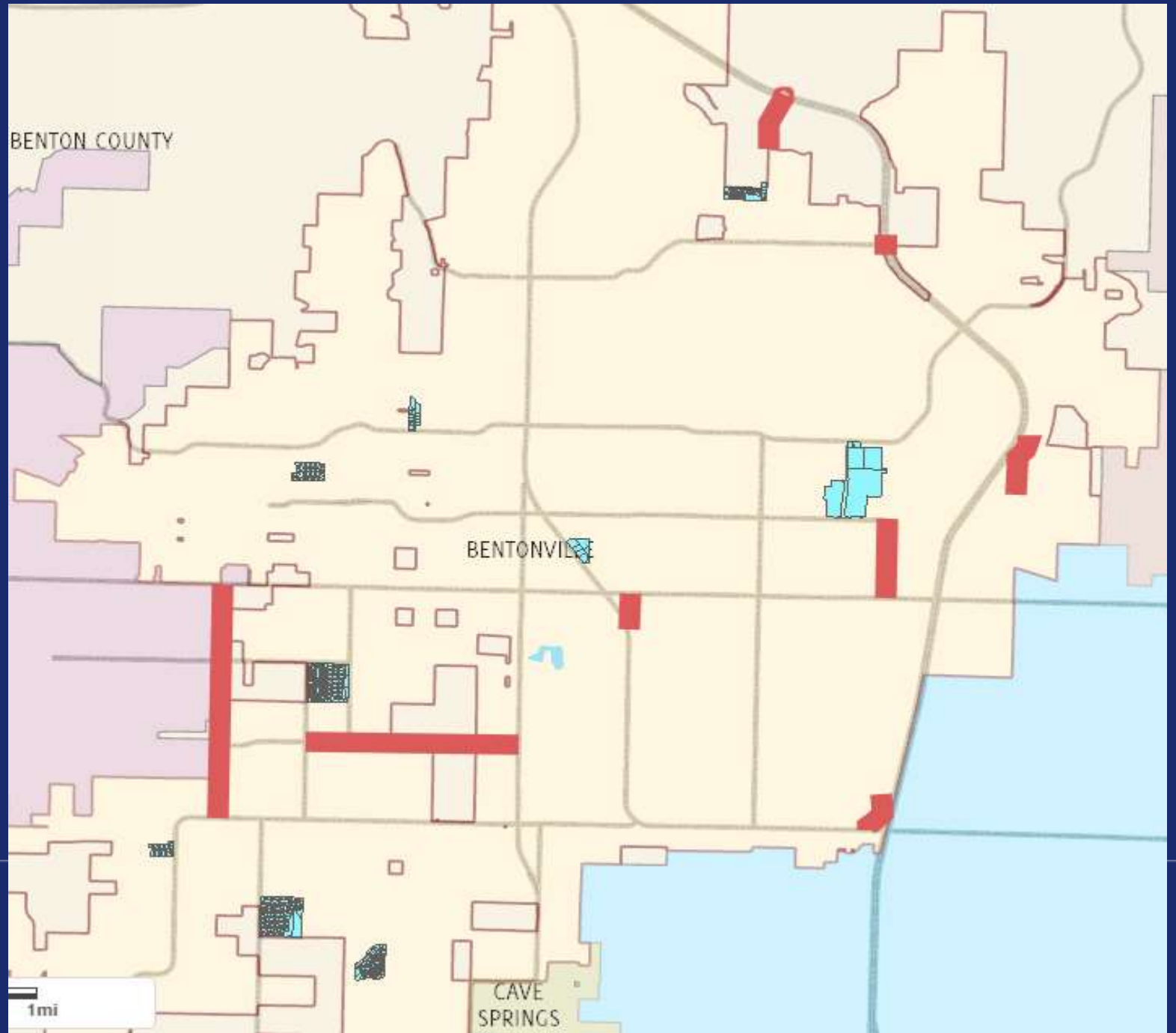


Potential Projects:



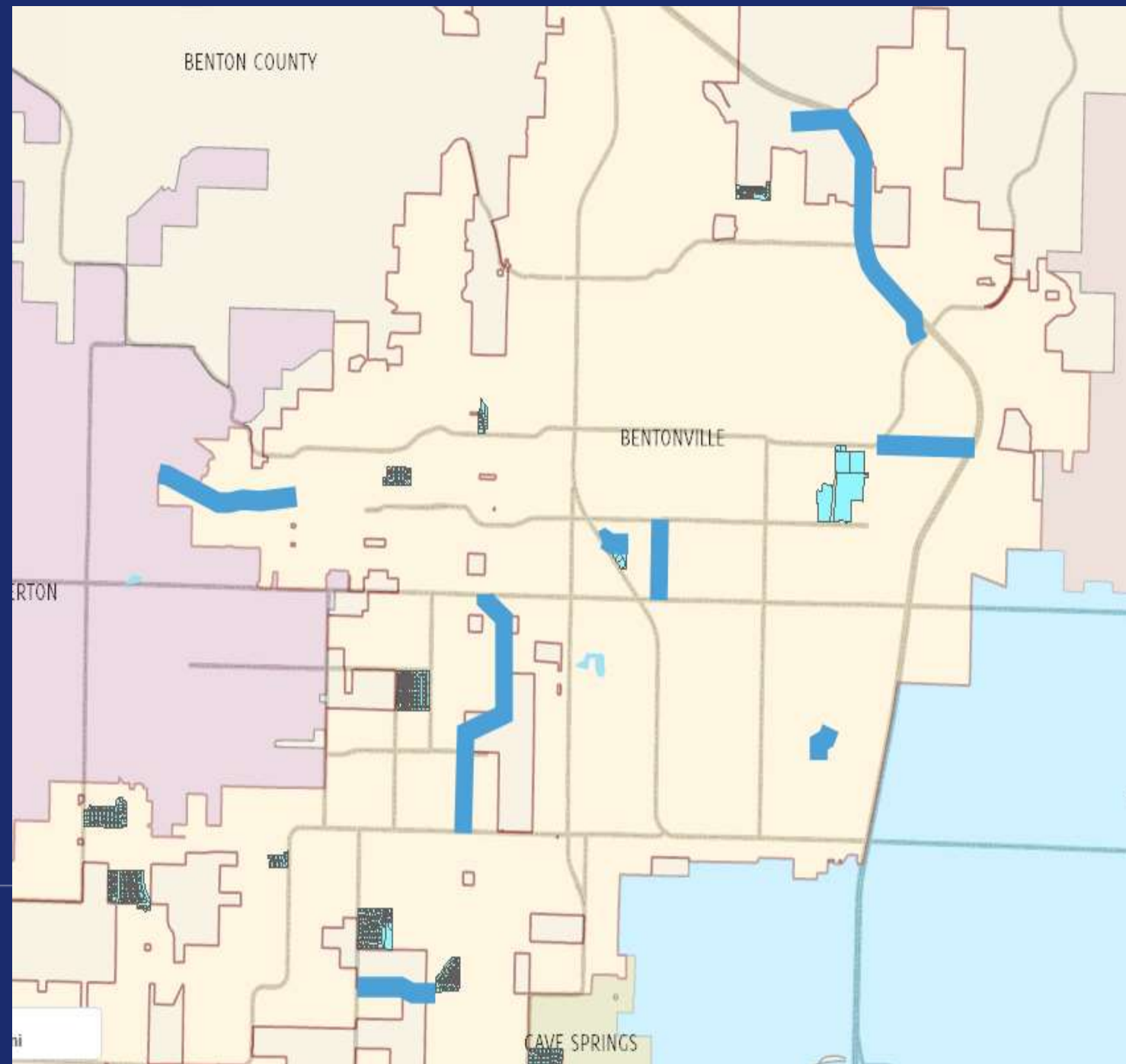
Arterial

- **SW A Street**
- **SE Moberly Lane**
- **Water Tower Road**
- **J Street extension**
- **SW 28th Street**
- **Greenhouse Road**
- **Tiger Blvd. Overpass**
- **J Street interchange on I49**



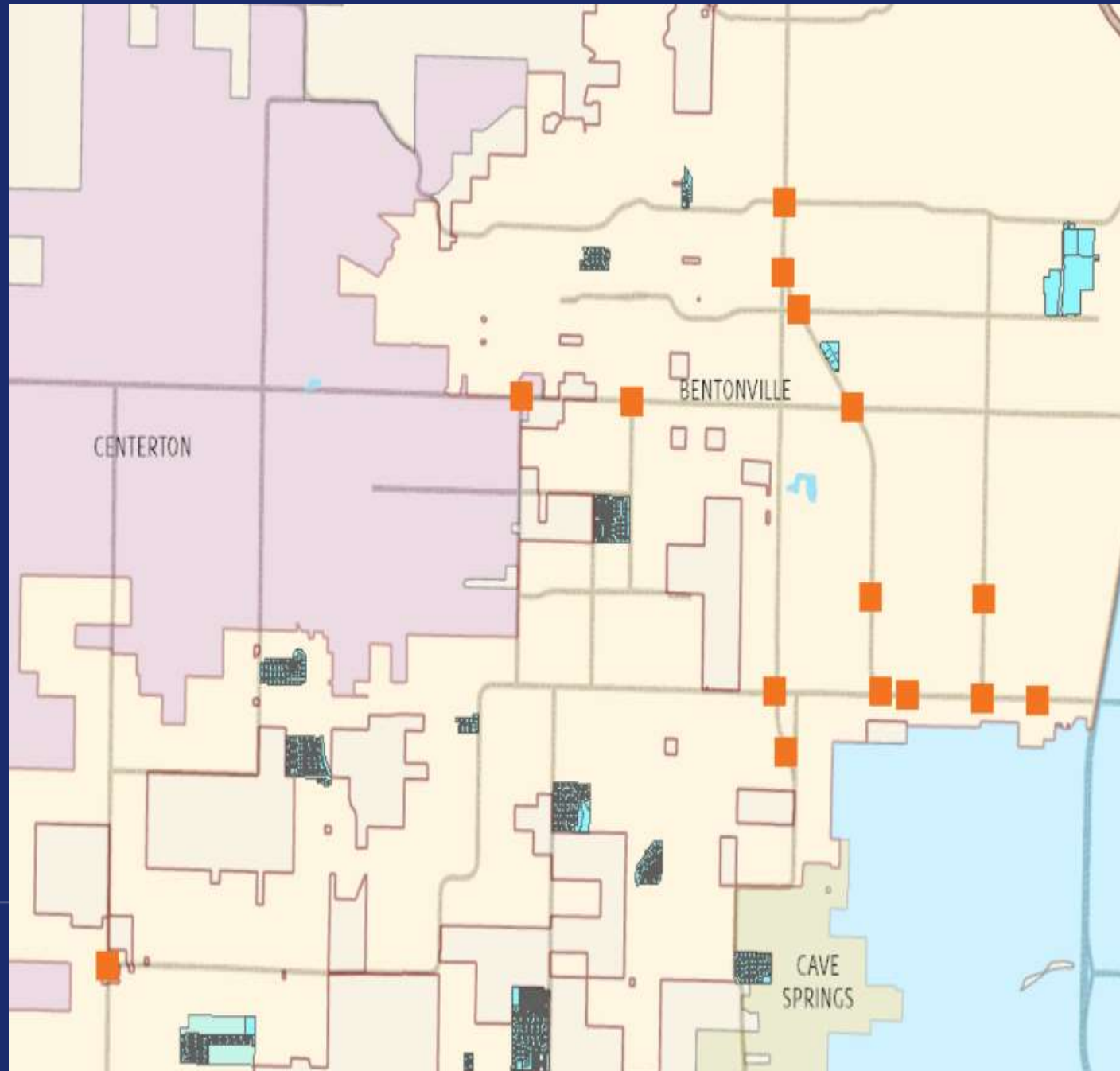
Collector:

- **O Street**
- **SW Bright Road**
- **SW A Street**
- **McCollum Dr.**
- **SW Gator Blvd.**
- **Red Bud**
- **Medical Center Parkway**
- **E. Battlefield Blvd.**
- **Town Vu Road**

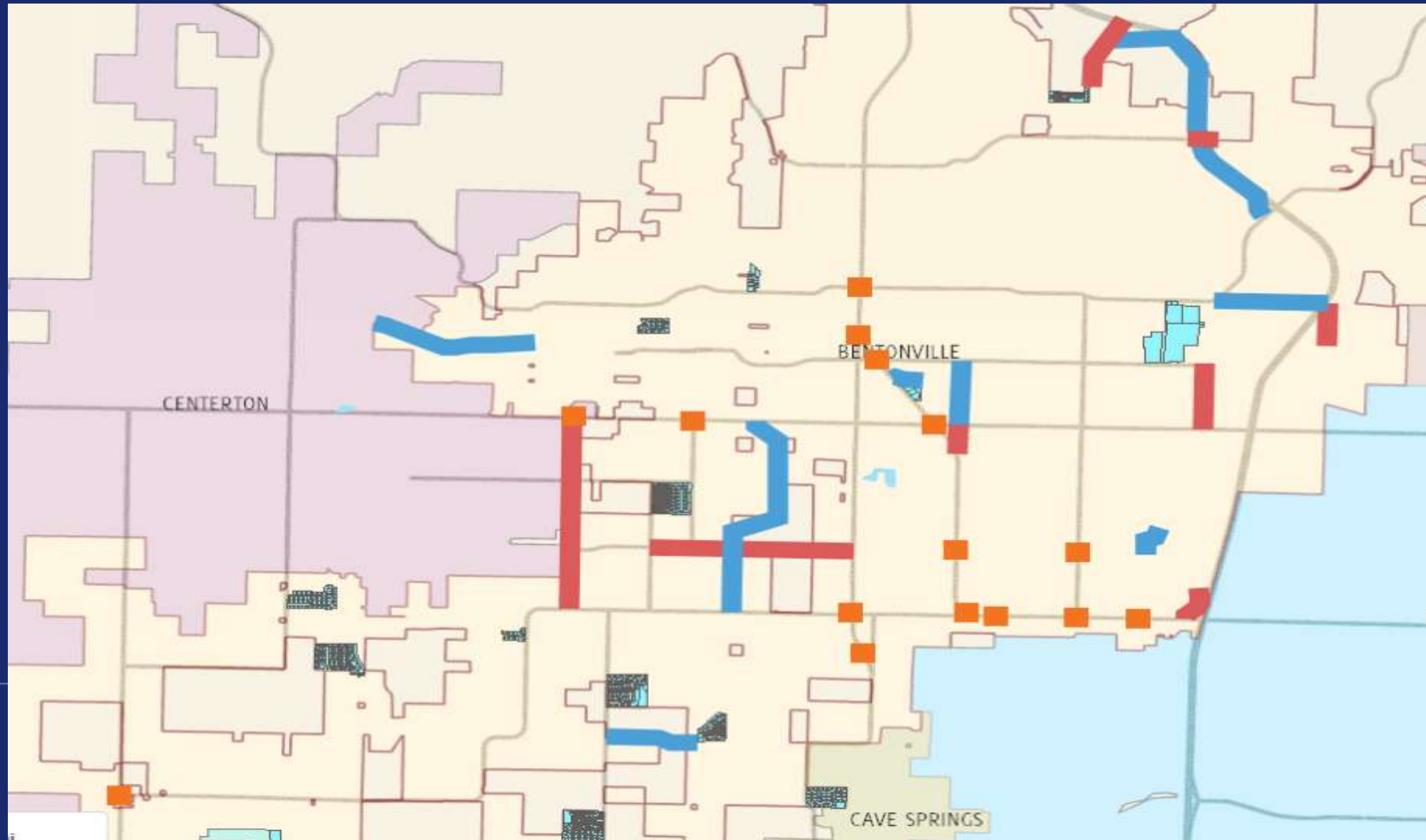


Intersection:

- **SE Walton Blvd / SE C**
- **S Walton / SE 28th**
- **SE Walton / SW Reg. Airport**
- **SE Walton / SE Medical Center Parkway**
- **SW 14th / Greenhouse**
- **SW Reg. Airport / SW I**
- **S Walton / Wal-Mart Entrance**
- **S Walton / SW 8th**
- **SW Reg. Airport / S. Vaughn**
- **SW 14th / S. Walton**
- **SW 14th / Been Rd./Tunbridge Dr**
- **Walton / Central Ave.**
- **SE 28th / SE J**
- **SE Walton / SE J**
- **SW I / SW 41st**



Potential Projects:



Parks and Recreation Improvements

Parks and Recreation Improvements

- Phillips Parks Renovation
 - Quilt of Parks
 - 8th Street Gateway and West Bentonville Trails
 - Melvin Ford Aquatic Center
-

PHILLIPS PARK RENOVATION

- Full Renovation of Phillips Park Sports Complex



PHILLIPS PARK RENOVATION

- Full Renovation of Phillips Park Sports Complex
- Projects includes 10-13 Ballfields, Batting Cages, Concessions & Restrooms, New sport lights, splash park / playground, open space and more



PHILLIPS PARK RENOVATION

- Full Renovation of Phillips Park Sports Complex
- Projects includes 10-13 Ballfields, Batting Cages, Concessions & Restrooms, New sport lights, splash park / playground, open space and more
- Transformation project will put Bentonville as a top baseball and softball destination, allowing the city to host state and national sports tournaments while providing a boost to the local economy.



QUILT OF PARKS

- Renovation / Creation of Downtown Public Spaces to better serve our citizens
- Additional Event Space for events such as First Friday, Farmer's Market, Bentonville Film Festival and Bentonville Half Marathon
- Renovation of Dave Peel Park to include destination playground restroom and plaza area
- Development of The Commons – plaza area with food truck plaza, outdoor dining, great lawn, stage and water feature
- Development of A Street Promenade as pedestrian boulevard connecting the Commons / Dave Peel Park to Lawrence Plaza / Compton Gardens
- Project enhances the Downtown Bentonville experience, creates retail and outdoor dining opportunities, economic development, public art, leisure experiences and family friendly destinations



THE COMMONS

The Festival Park



A STREET PROMENADE

Pedestrian Only - Parklets

LIGHTING

Serving dual purposes, light poles can provide legibility to the landscape through both signage and lighting

PARKLETS

Each space offers opportunities for outdoor dining, flexible seating, and small play areas.

URBAN CANOPY

Large shade trees and seasonal medium shade trees create a framework for the parklets

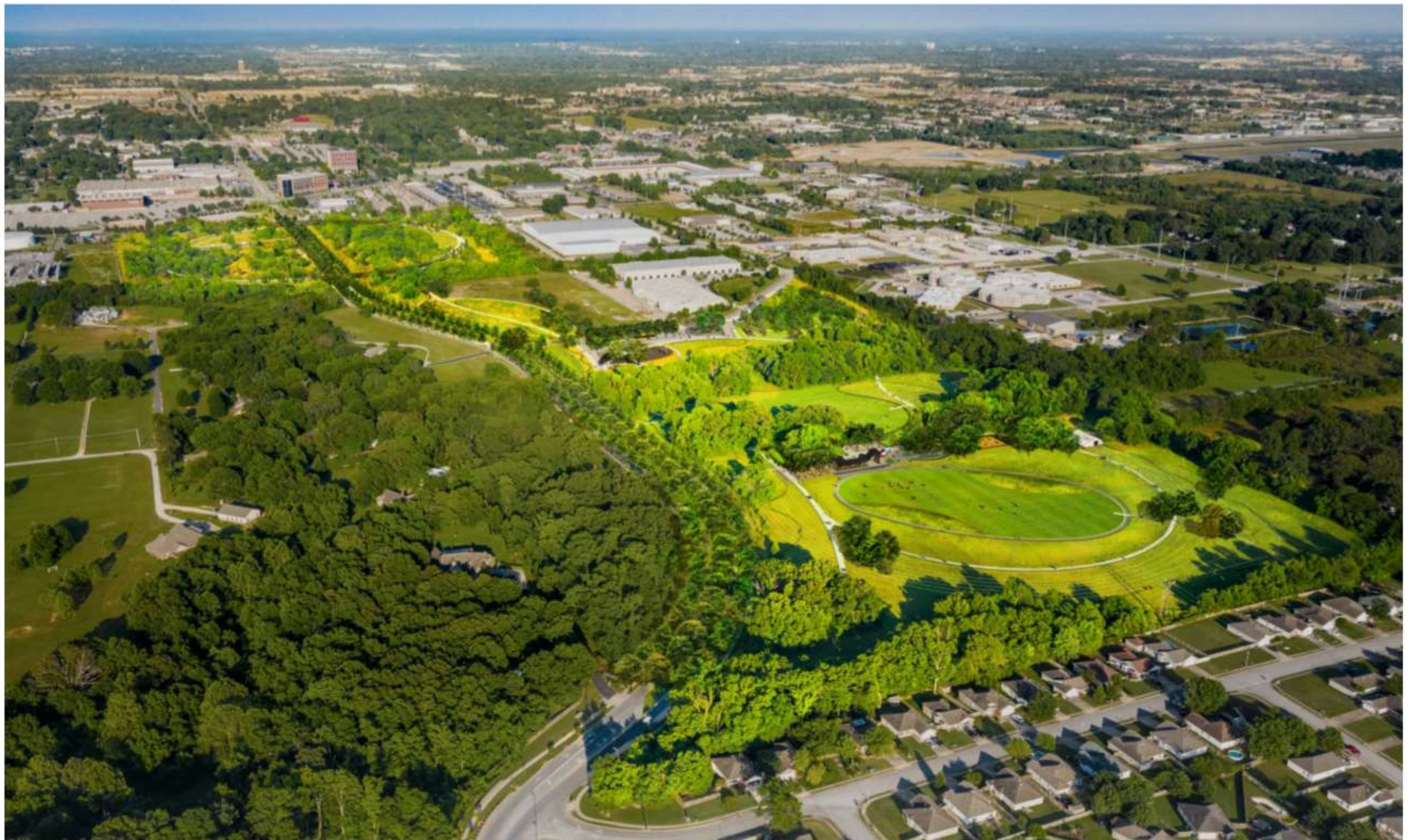


8th STREET GATEWAY PARK/ WEST BENTONVILLE TRAILS

- 100 Acres Park serving Bentonville residents, but primarily West Bentonville.
- Park includes Trails, Destination Playground, Dog Park, Skate Park, Festival areas, passive areas, public gardens, court games, tree preserves and more.
- Gateway Park will be connected via trail to Coler Mountain Bike Preserve, Osage Park, 28th Street Park and Citizens Park.



Overview of Proposed Park from Northwest





MELVIN FORD AQUATIC CENTER



MELVIN FORD AQUATIC CENTER

- Project includes addition of recreation based swimming area including zero-depth entry, water slides, and lazy river
- Includes enhancements to the current 50M pool to allow for additional competitive meets
- New concessions area



Library Improvements



A Downtown Destination

- Quality facility (Est. 2006)
- Demonstrated need for Library services
 - Strong circulation
 - Program attendance
 - Library visits & use
- BPL expansion to align with:
 - Population growth
 - School enrollment
 - City development

Library Site



The City of Bentonville, AR



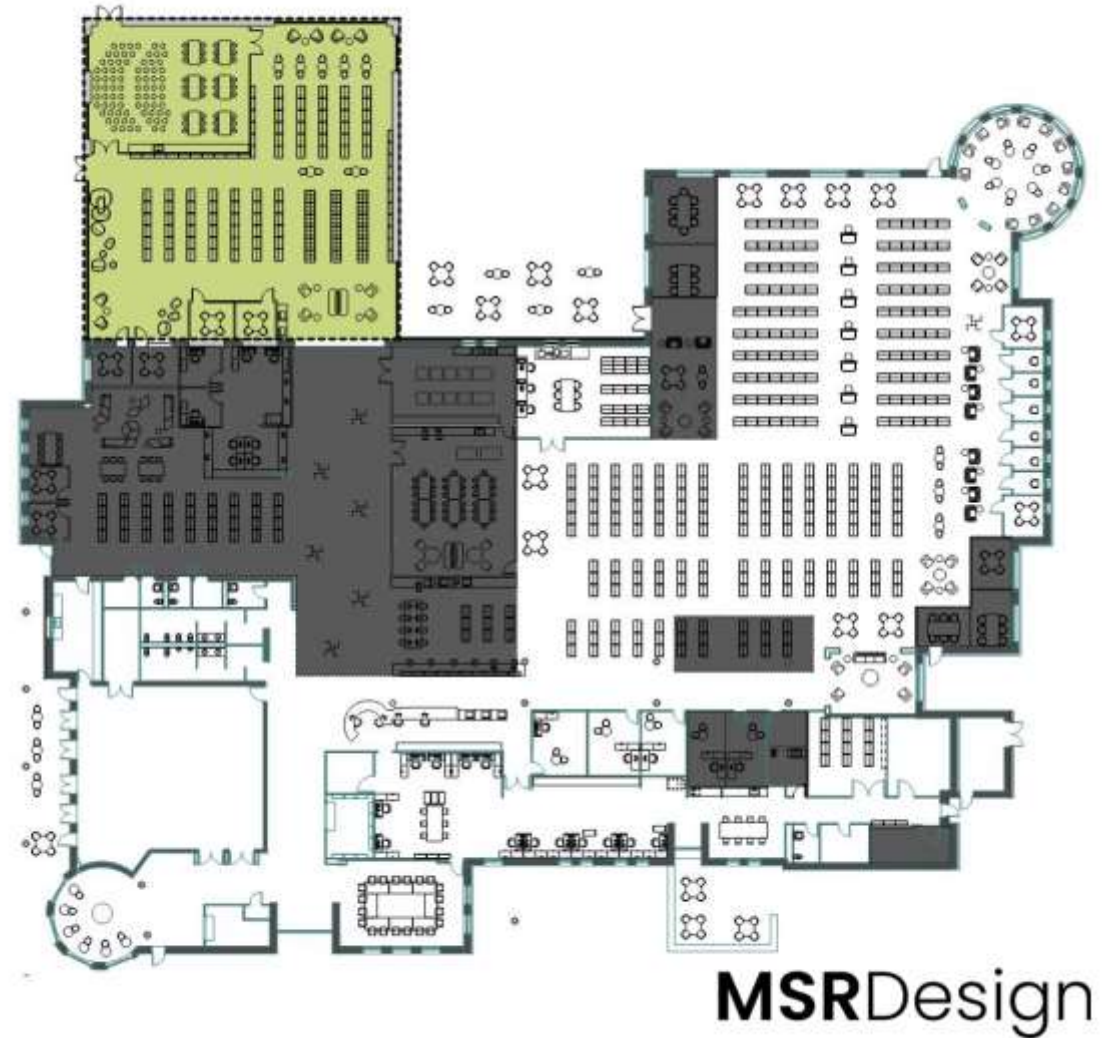
Bond Extension - 2021

\$4.5 Million

Proposed Plan

- 6,400 SF Addition (New)
- 10,000 SF Interior Renovation
- 16,400 SF Improvements
- + Light Renovation as Needed Throughout Facility

Proposed plans, concepts, images & budget by MSR Design



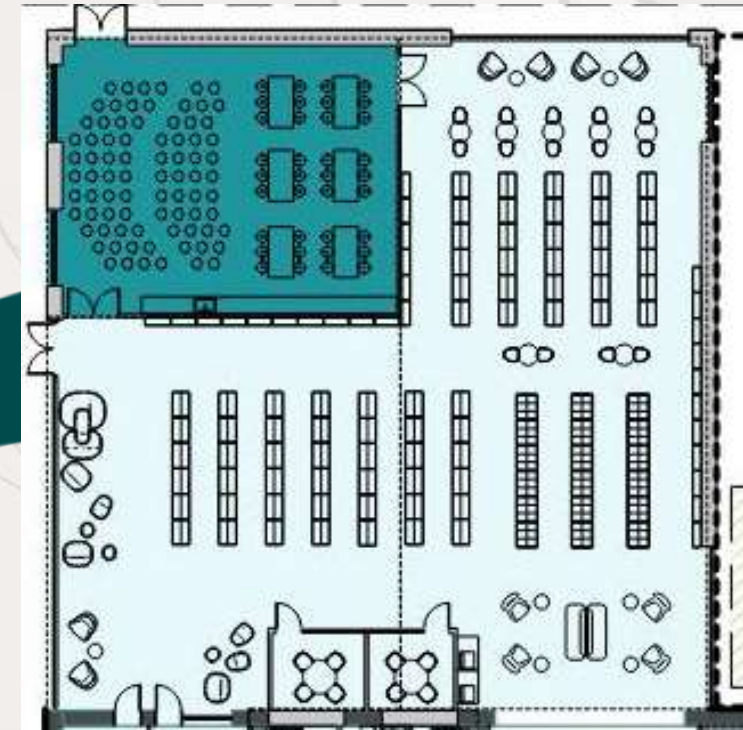
Proposed Site Plan



- Proposed facility addition
 - Children's Department
- Site development
 - Potential relocation of trail
 - Outdoor program space
 - Additional parking
- Illustrates available land for library growth

Proposed Children's Expansion

- New & larger storytime area
- New & larger craft space
 - Integrated with storytime



Concept Rendering: Storytime Space

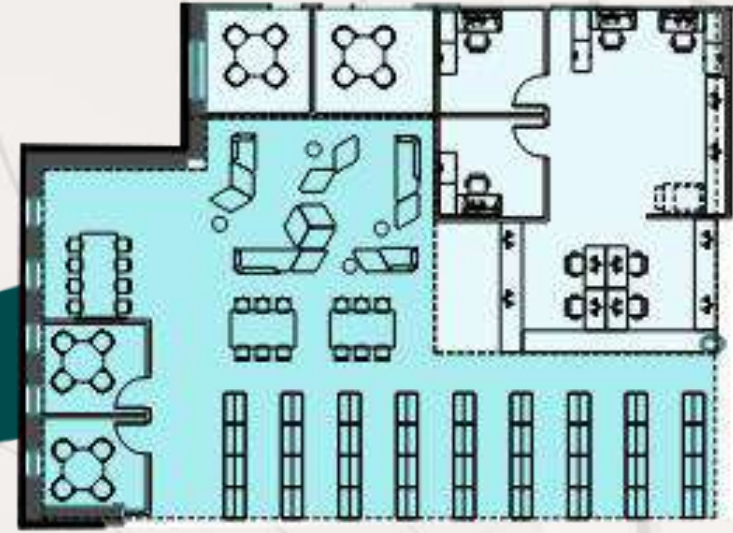
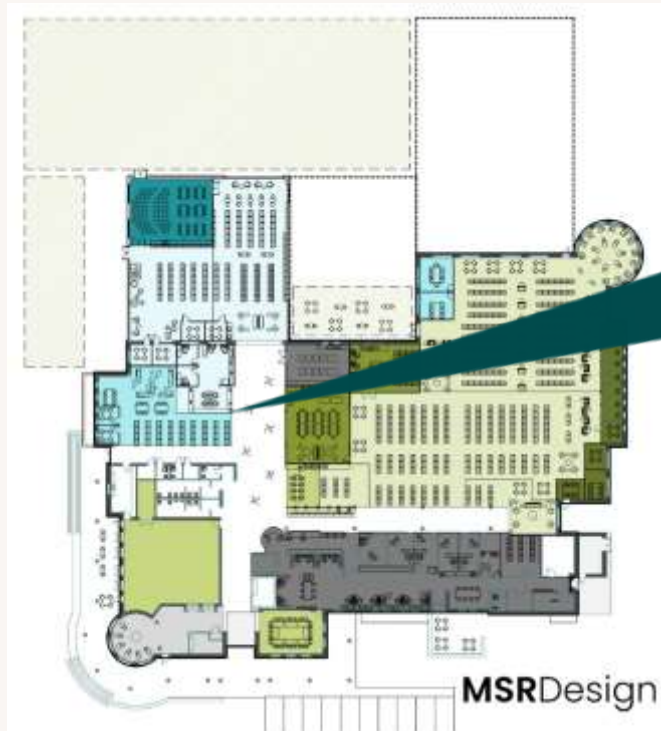
- Expands literacy offerings for more children & families
- Place for gathering, play-based learning & reading
 - Storytimes
 - Library Lessons
 - Educational Activities
- With larger integrated craft area

- Vibrant space
- Open design



Proposed Teen Zone

- Youth Services - comprehensive service model



- Expanded collection
- Private study rooms
- Collaboration spaces

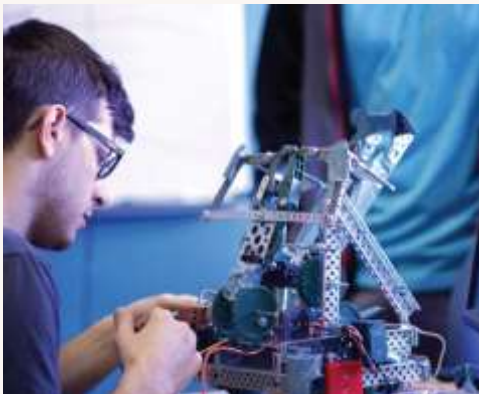
Concept Rendering: Activity Room

- A Makerspace for Lifelong Learning
- Programs, classes & workshops for all ages
 - Arts & Crafts
 - Tinkering & Making
 - Technology & Coding
- Versatile for passive programs

- Centralized location
- Flexible design



Activity Room / Makerspace



Meeting & Collaboration Rooms

- For community & library use



The City of Bentonville, AR



Bond Extension - 2021

Outdoor Spaces

- Connections to nature
 - Learning gardens
 - Space for programs
 - Seating areas



Minor & Light Renovations



- Light renovation throughout facility
- Minor renovation to some staff areas
- Expansion of exterior bookdrop AMH system
 - Automatic Materials Handling

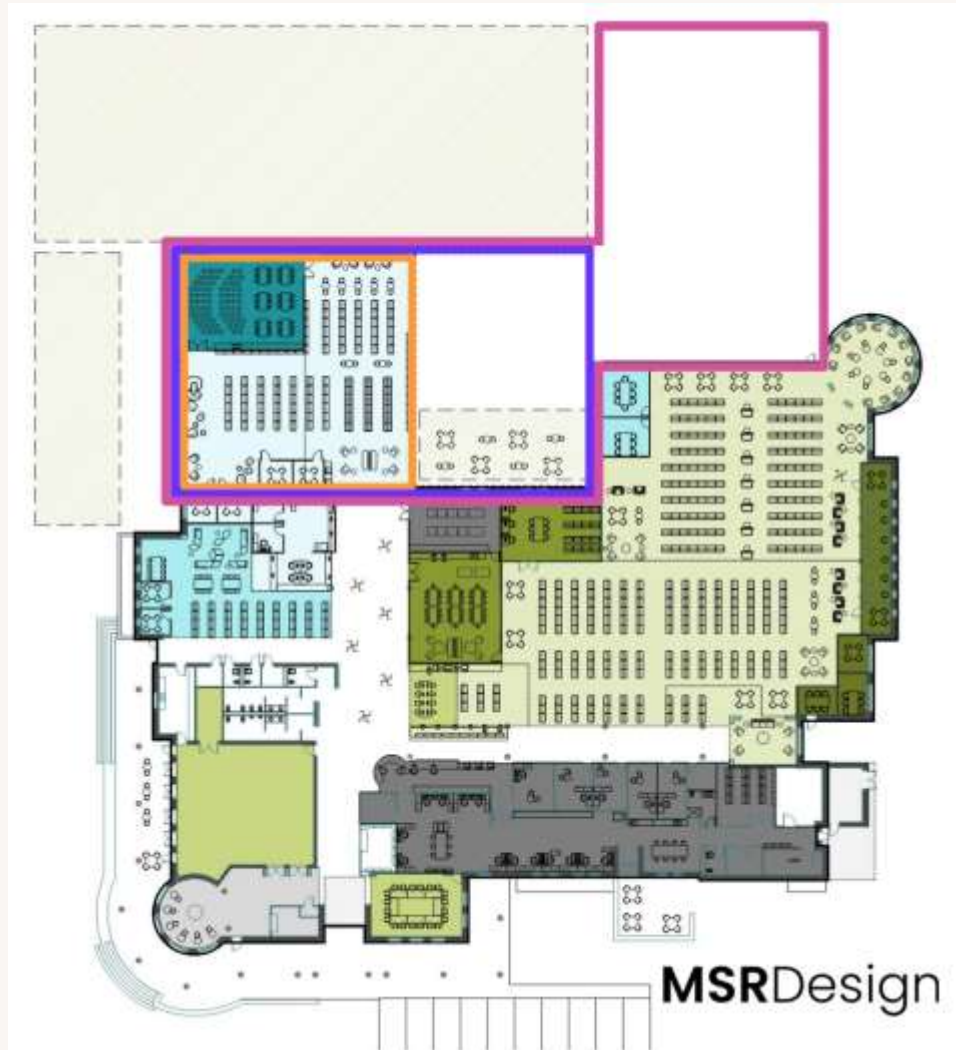
New Construction & Renovation

- Allows BPL to serve more patrons of all ages
- Expands opportunities to connect with others
- Enhances the library experience
- Provides additional program spaces
- Integrates new areas with existing spaces
- Improves staff's ability to better serve our community

Needs Assessment Study

- A community study to determine options for the Library's growth
- Presentation by MSR Design
 - January 26, 2021
- Study results will demonstrate greater need for BPL's expansion to adequately serve our community well into the future
- Will require a combination of bond funding & private contributions

Proposed Layout – Options



- Illustrates available land with options for facility expansion

- Bond Option

- 6,400 SF



- Additional Options*

- 13,700 SF



- 20,100 SF



*Includes bond option amenities + additional options that would require private funding

City of Bentonville Public Safety and City Radio System



Current Radio System

- On March 12, 2006, a tornado damaged portions of our city
- During cleanup operations, City departments (police, fire, electric, street, parks, etc.) were unable to communicate with each other and other agencies due to the lack of interoperability



Tusa Consulting Services



Needs Assessment – December 2020

Most of the current radio equipment used by the City of Bentonville is no longer produced and is reaching end of life, with infrastructure that is old and dilapidated.*

*Tusa Consulting Services communications needs assessment for the City of Bentonville.

Needs Assessment – December 2020

- Entire New System
 - Mobile and Portable Radios
 - Dispatch consoles
 - Tower Sites
 - Communication Towers
 - Training
 - Maintenance



Multi-agency Interoperability with Communications

- September 9-1-1 communications studies concerning interoperability and the need for a radio system that allows for multi-agency interoperability





- We are seeking a new radio system manufactured under the Association of Public-Safety Communications Officials (APCO) Project 25 standard or commonly known as “P25 that improves City of Bentonville interoperability, but also creates multi-agency interoperability
- Most area agencies (Benton County, Rogers, Springdale, Siloam Springs, and others) have already switched to P25 digital systems within the past two years – our current system is incompatible with a P25 system
- Bentonville and Bella Vista are the only NWA cities without interoperability communication

Project 25 System

Project 25 (P25) is the standard for the design and manufacture of interoperable digital two-way wireless communications products. Developed in North America with state, local and federal representatives and Telecommunications Industry Association (TIA) governance, P25 has gained worldwide acceptance for public safety, security, public service, and commercial applications. **

**<http://www.project25.org/>

Fire Training Facility Improvement

Bentonville Fire Department



Training and Burn Facility

The Importance of Training

- The job we do is dangerous and the training we do also has an element of danger built into it. Ensuring a safe training environment is a top priority for those conducting the training. During training, our goal is realism that is tempered with an element of control to ensure safety.
-

Being Prepared







Training Site Justification

- Comply with NFPA 1402: Standard on Facilities for Fire Training and Associated Props
- Provide ability to train personnel on High Risk, Low Frequency events
- Improve firefighter safety during fire training
- Provide regular, scheduled training opportunities
- ISO rating – 27% training point loss for not having a burn structure
- Public concern with Live Fire training in donated structures



Fuel Source and Emissions

- Fuel design feature would utilize propane gas instead of Class A materials such as wood. This feature eliminates black smoke columns released into the atmosphere causing environment and health issues. The elimination of Class A materials requires the use of props to simulate fire conditions.
- This would be CLEAN BURN structure.

Smoke System

- Smoke would be provided using a theatrical smoke system that is EPA compliant with no harmful effects





Props







- Specifically Designed as a Fire Training/Burn Building
- Greatly Increases Firefighter Safety During Training
- Provides Training Flexibility and Consistency
- Meets Regulatory Standards
- Reduced Environmental Impact

Law Enforcement Training Facility

Law Enforcement Training Facility

- The Law Enforcement Training Facility will be incorporating the latest technology to enhance public safety.
- Bentonville is the only city in Northwest Arkansas without their own training facility for our emergency personnel. With growth, it has not been easy to utilize the facilities of others.
- The Training Facility would include:
 - A virtual de-escalation and judgmental use-of-force training simulator
 - A live outdoor range
 - K9 training area
 - Training building used to house range equipment
 - Bomb Squad – Special Response Team Training Area-and other Specialty Training

VirTra Simulation V-300





VirTra

De-Escalation

De-Escalation: Training Scenarios

Law enforcement is a difficult job. Officers go to work knowing their time will be filled with mitigating harm, preventing crime and interacting with people with the best—and worst—intentions.

To prepare officers for these situations, VirTra simulators allow officers to practice and improve their de-escalation skills while increasing cognitive load. Each simulator is equipped with a wide variety of branching scenarios that allow for consistent communication, full toolbelt training, evaluation and AAR's for de-escalation methods, with accompanied curriculum.

Simulation Training

- VirTra helps prepare law enforcement officers for real-life incidents so they can return home safely after each shift.
- Each real-world, de-escalation, and judgmental use of force training simulator has surreal scenarios that provide an in-depth look into human performance. The demands of law enforcement to make critical decisions in tense, uncertain, and rapidly evolving situations require that the human performance aspect of cognitive neuroscience and human physiology are taken into account as part of the police training. This will allow our officers to utilize all tools available during simulation, which may be limited or unable to duplicate on just a live-fire range.
- This equipment and facility would be available for other agencies to utilize to benefit the NW Arkansas law enforcement region.
- Continuous use available for in-house training, Citizens Police Academies, Youth Academies, and public education.
- 5 screens- 4 k technology - system includes numerous scenarios incorporating programs specific to firearms and teaching some of the latest law enforcement training.
- Examples include the following: Implicit Bias Training under Use of Force Training/ Scenarios (partnered with Force Science), Autism Awareness Training, Officer Communication Skill Sets, Crisis De-Escalation, Crisis Intervention Training, Active Shooter Scenarios, High-Risk Vehicle Stops, Mental Illness, etc.
- Enables law enforcement agencies to teach effectively, train, test, and sustain departmental training requirements
- Includes Interactive Virtual Coursework with a Master Manual with Pretest, PowerPoint, Test Answer Keys and Student Manual, and Post Test.



ALL-INCLUSIVE TRAINING

Each curriculum includes scenarios, relevant case law and recent after-action reports, providing extensive training points for instructors.





100 yard live fire range

Law Enforcement Training Facility



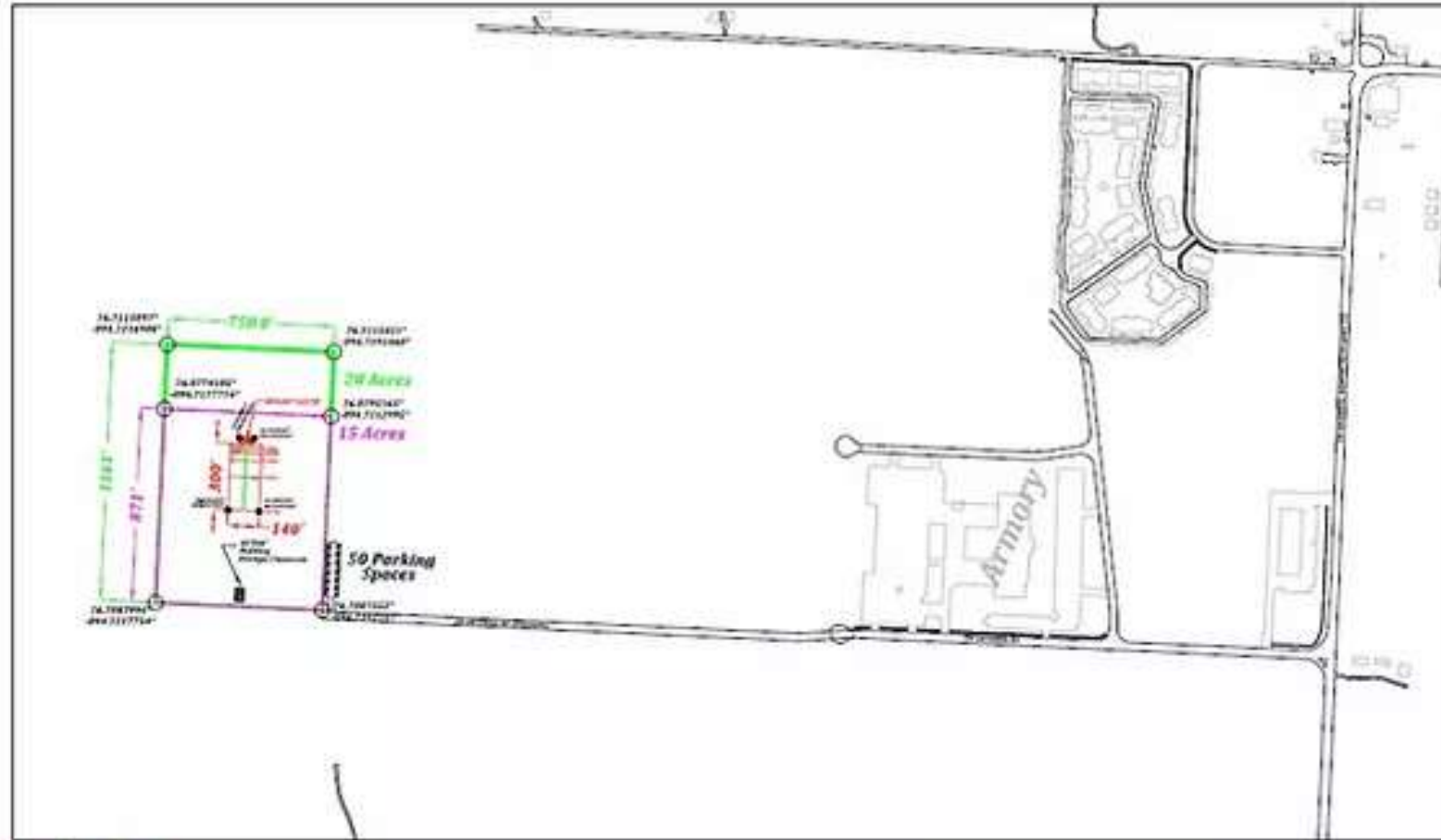
Benefits

- 100 yard- outdoor range with 60 ft bullet trap to capture all lead. This keeps the range within best management practices according to EPA in regards to reclamation and recycling. The collected lead can be sold back to specific companies.
- The outdoor setup allows the facility to be used for many types of training events to include K9 training, less-lethal training, and various courses of instruction specific to law enforcement.
- 40 ft x 60 ft x16 ft steel building will house target equipment and an indoor virtual simulator that can be used anytime by officers 24/7.
- Will allow Police Department to continue to meet the State of Arkansas, Commission on Law Enforcement Standards and Training (CLEST), and Bentonville Police Department internal standards for firearms training, while increasing opportunities for advanced training.

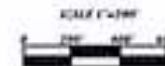


Location

- The outdoor range would be constructed on 20 acres of city-owned land near the Bentonville Armory just off Regional Airport Road



**Bentonville Law Enforcement
Fire Arms Training Facility**



Drainage Improvement Projects

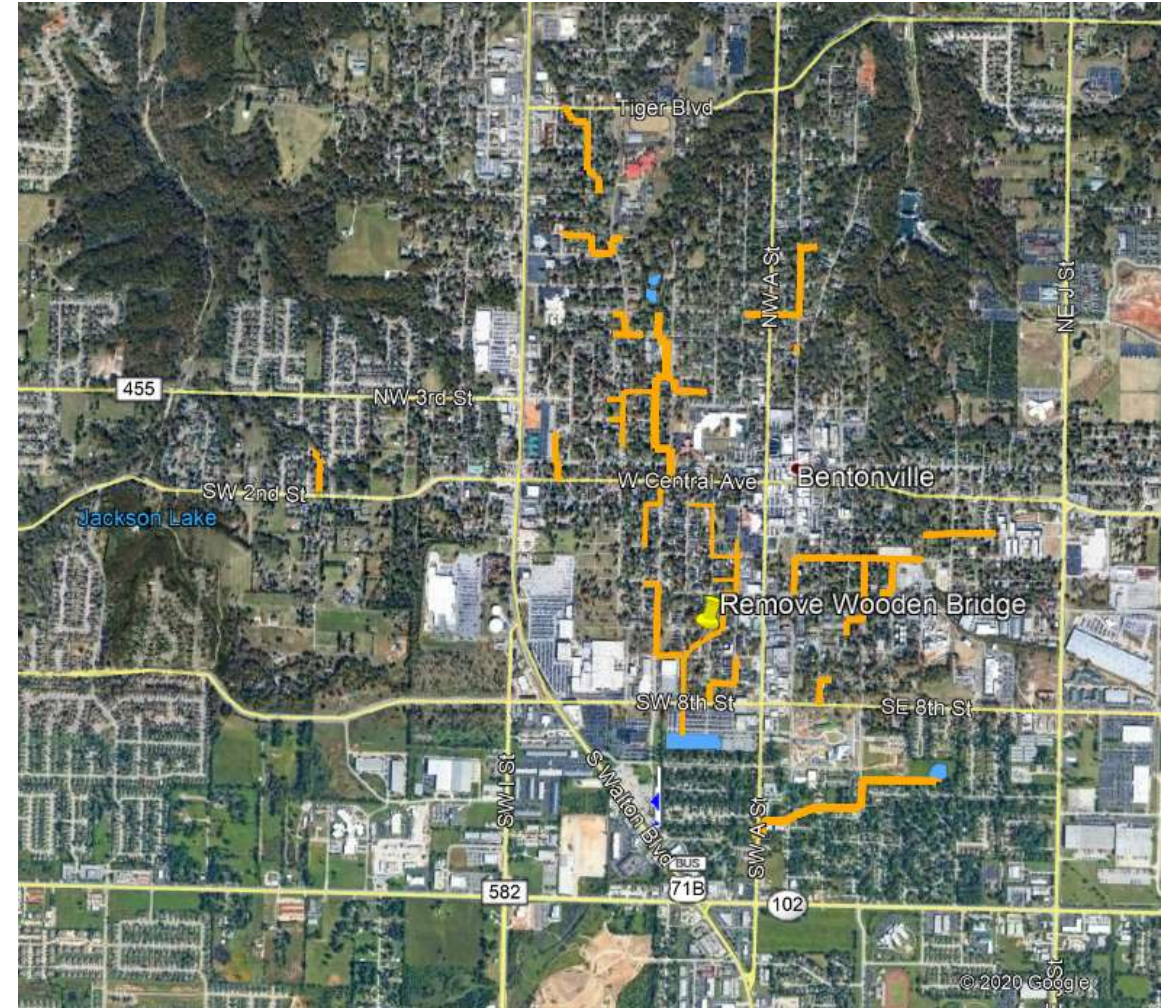
Drainage Improvement Projects

- 25 proposed projects to reduce flooding and provide for effective drainage control systems.
- Drainage will be improved for over 500 homes.
- Flooding of roadways will be reduced.
- Infrastructure will be designed to provide drainage for future development.
- The projects were selected from drainage studies, 311 concerns, and known flooding issues.

Problem



The City of Bentonville, AR



Bond Extension - 2021



Highlights

- Projects range in cost from \$96K to \$4.6M
- The majority of the projects will be completed in existing City Right-of-Way
- The Street Department will complete portions of some projects to help reduce cost
- Projects were prioritized based on hazards, property damage, drainage improvements, and number of properties impacted
- The projects will be easier to maintain than the current system
- Connections to the new system will allow for future redevelopment and growth
- Some projects will include features to allow secondary uses like parks and trails

Bond Extension – Questions & Answers

