

Transformation of MBMHI Master Plan

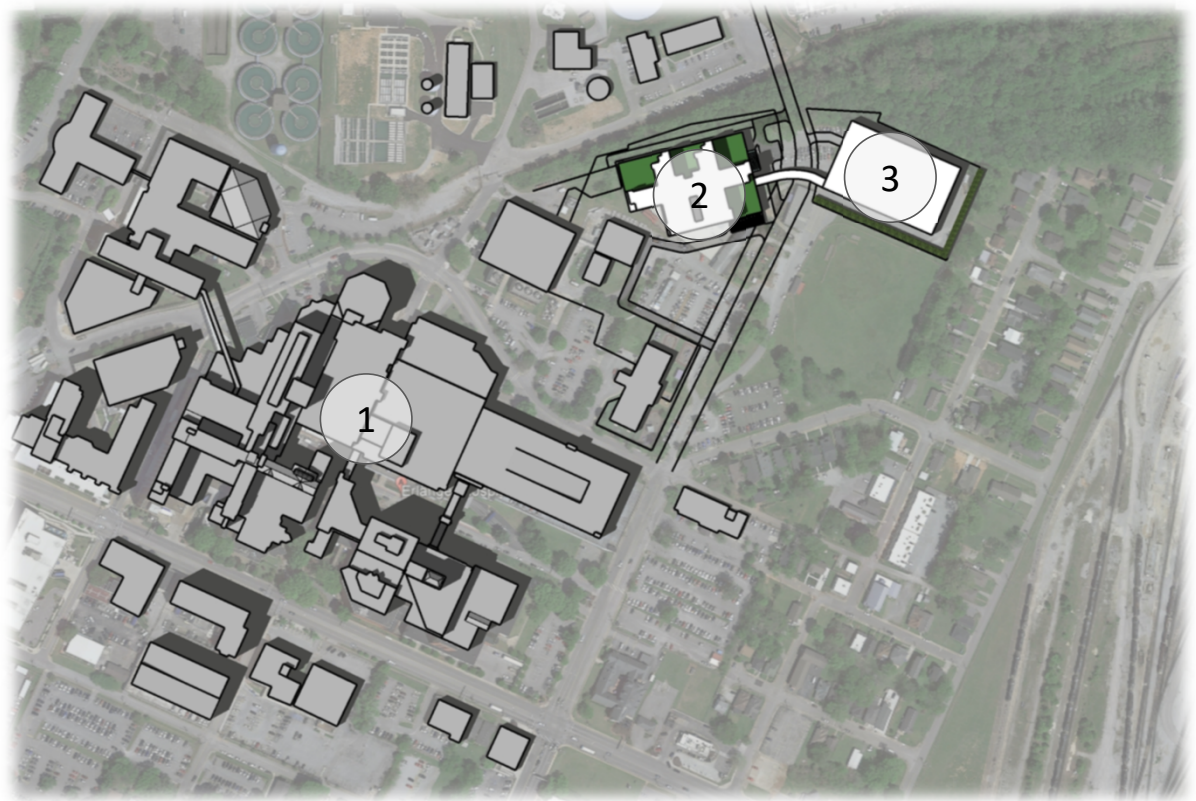
Site Test-Fit Using 2018 Approved Master Plan Footprint at 6 Stories with Basement



SITE BUILDING MASSING

Site Test-Fit Using 2018 Approved Master Plan Footprint at 6 Stories with Basement

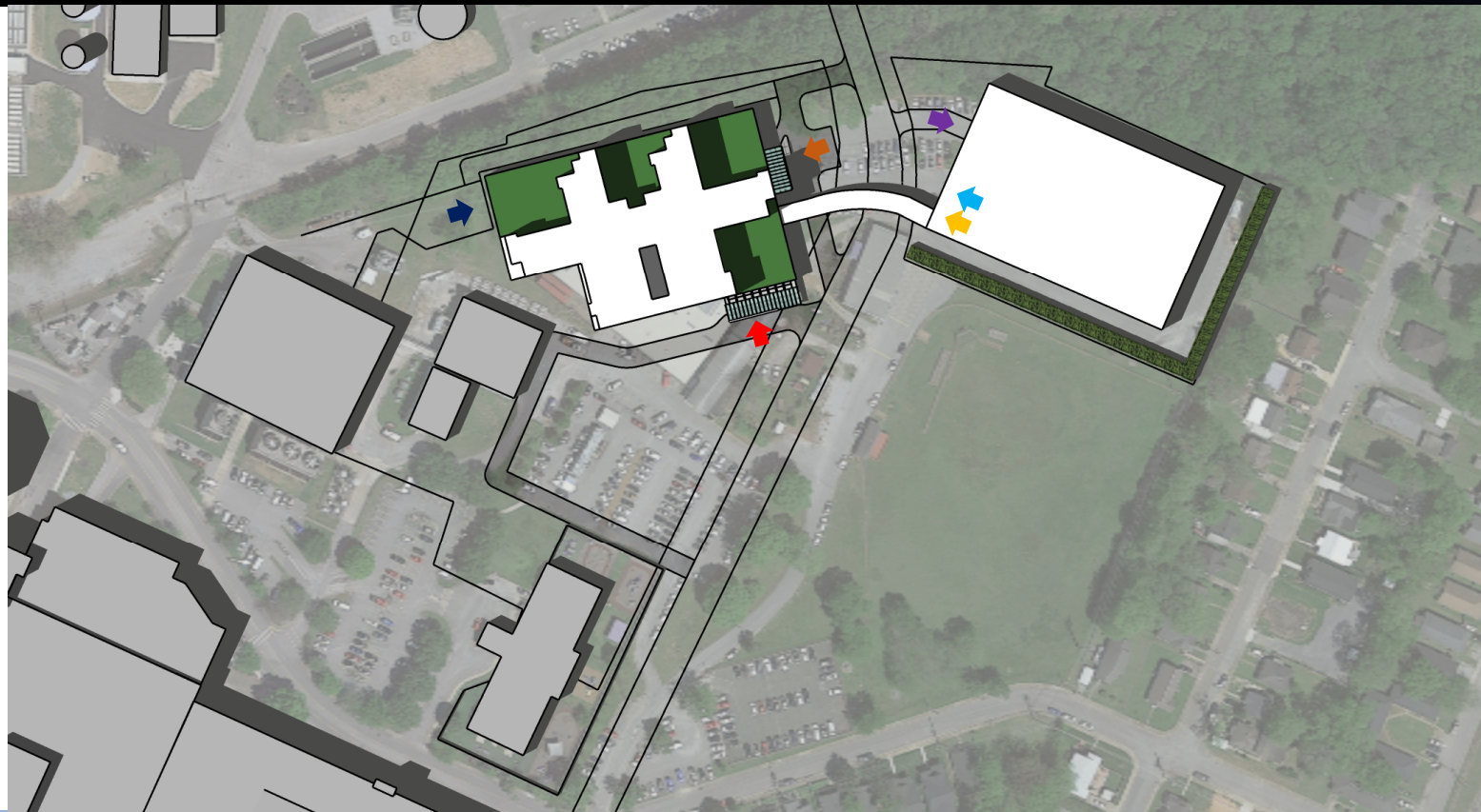
- 1. Erlanger Baroness Medical Center
- 2. New 200 bed Behavioral Health Hospital
- 3. Garage



SITE BUILDING MASSING

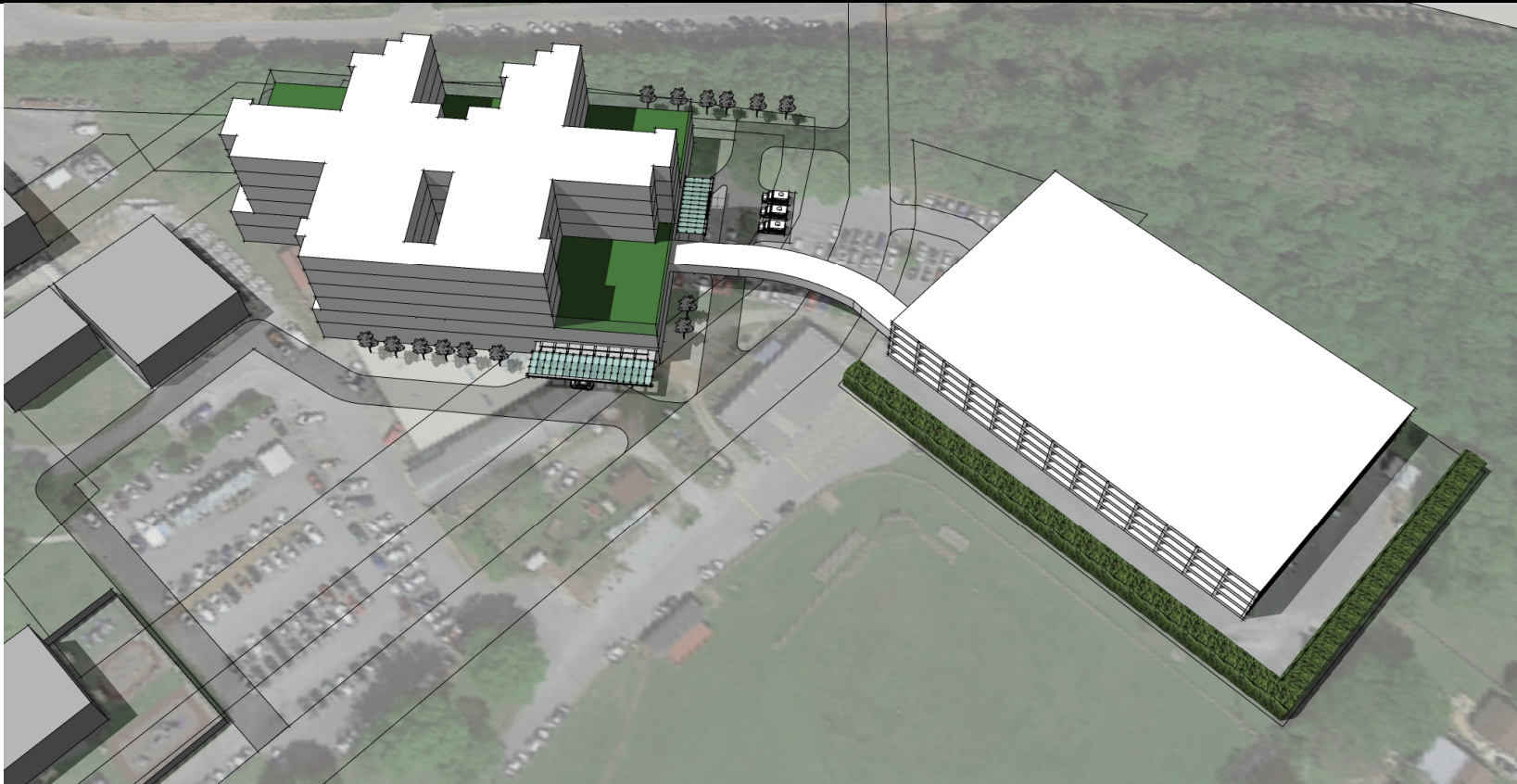
Site Test-Fit Using 2018 Approved Master Plan Footprint at 6 Stories with Basement

- ▶ Main entrance and drop off
- ▶ Staff entrance
- ▶ Admission entrance
- ▶ Service drive/ Dock
- ▶ Garage entrance
- ▶ Ambulance drop off/Pick up
- Roof top courtyard



SITE BUILDING MASSING

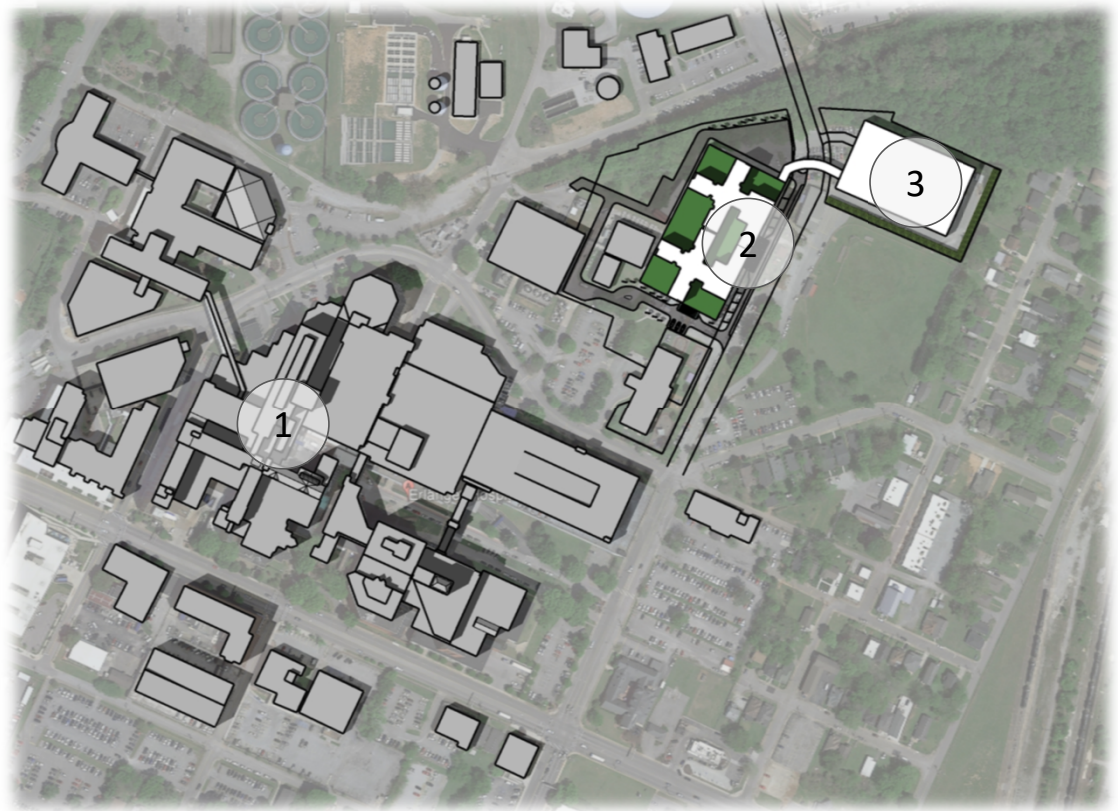
Site Test-Fit Using 2018 Approved Master Plan Footprint at 6 Stories with Basement



SITE BUILDING MASSING

Alternate Site Test Fit Using Typical Modern House-Neighborhood-Downtown Model at 6 Stories with Basement

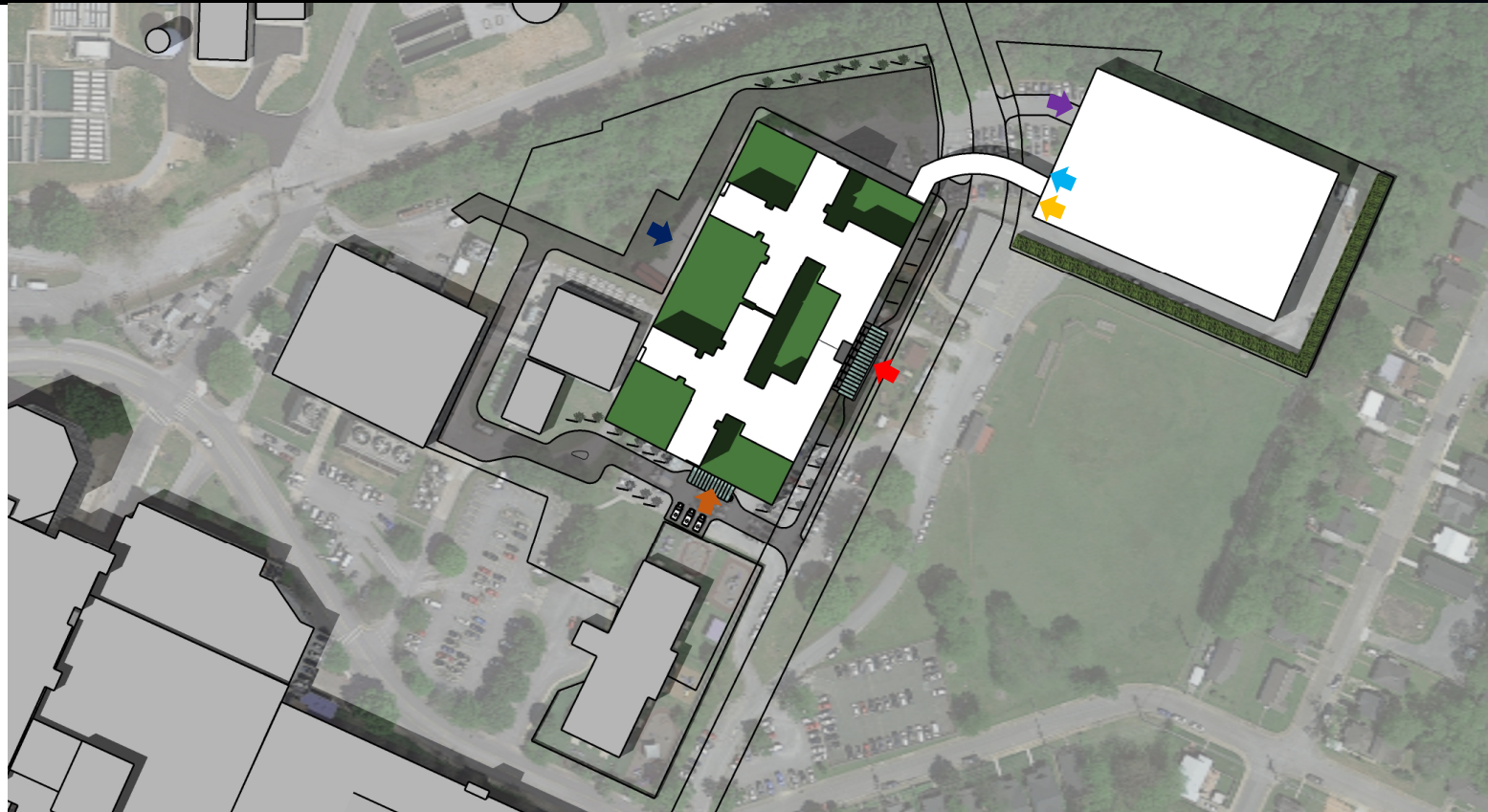
1. Erlanger Baroness Medical Center
2. New 200 bed Behavioral Health Hospital
3. Garage



SITE BUILDING MASSING

Alternate Site Test Fit Using Typical Modern House-Neighborhood-Downtown Model at 6 Stories with Basement

- ▶ Main entrance and drop off
- ▶ Staff entrance
- ▶ Admission entrance
- ▶ Service drive/ Dock
- ▶ Garage entrance
- ▶ Ambulance drop off/Pick up
- Roof top courtyard



SITE BUILDING MASSING

Alternate Site Test Fit Using Typical Modern House-Neighborhood-Downtown Model at 6 Stories with Basement

