

Facilities Review

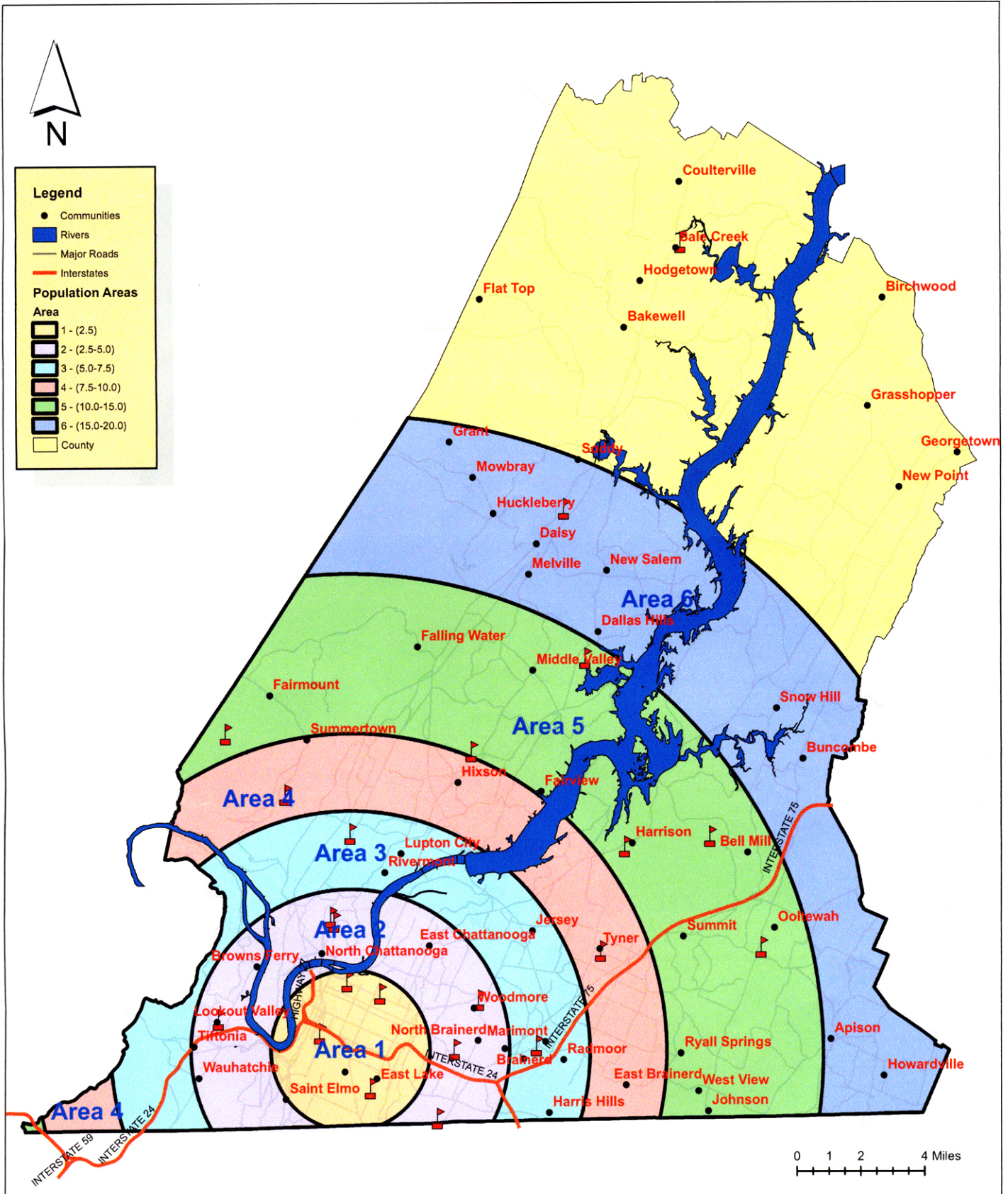
- ❖ **New School** – Build a new elementary school south of Apison Pike and west of Ooltewah-Ringgold Road to replace the existing East Brainerd Elementary School and relieve overcrowding at Bess T. Shepherd, Westview and Apison Elementary Schools. This will require zone changes
- ❖ **New School** – Build a new elementary school north of Ooltewah-Georgetown Road and west of I-75 to replace the existing Ooltewah Elementary School and relieve overcrowding at Wallace A. Smith Elementary and Snow Hill Elementary. This school will also serve new growth related to Enterprise South. This will require zone changes
- ❖ **Addition/Renovation** – Build Multi-purpose room and renovate to add additional kindergarten rooms to Wolftever Creek Elementary, general renovation/paint and finishes. This will require zone changes
- ❖ **Addition** – Build an addition to Snow Hill Elementary School to accommodate growth in the Highway 58 area. This will require zone changes
- ❖ **New School** – Build a new elementary school to replace Ganns Middle Valley and Falling Water Elementary School This will require zone changes
- ❖ **New School** – Build a new elementary school to replace Alpine Crest, DuPont, and Rivermont Elementary Schools. This will require zone changes
- ❖ **New School** – Build a new school to consolidate Harrison Elementary, Hillcrest Elementary and the attendance zone of Lakeside Academy. Lakeside Academy would still exist as a “dedicated” magnet school. This will require zone changes. Lakeside renovations will be a part of this recommendation.
- ❖ **New School** – Build a new school to replace C.S.L.A. with a K-12 program. A K-12 configuration will provide additional relief for other overcrowded schools.
- ❖ **Addition-** Sale Creek Middle/High – to relieve overcrowding
- ❖ **Addition**—Nolan Elementary- to relieve overcrowding

Net effect of facilities review (as presented) is to construct six (6) new schools and four (4) additions and close 11 schools

Other Issues to Consider:

- East County – growth as a result of Enterprise South development
- East Hamilton School – overcrowding
- Central High School – Addition/Gymnasium/classrooms
- System-wide fire code upgrades
- Additional adult high school(s)
- Lookout Valley High- new gymnasium and classrooms
- County-wide – Extracurricular facilities – Sports/ROTC/Title 9 compliance
- Other concerns:
 - Soddy Middle Renovation

Hamilton County Schools Population Study





Population Study

A population study was conducted by the Hamilton County Department of Education to determine trends in student migration within the county. The study will be used to monitor student enrollment trends, assist in determining school boundaries, and to assist in facilities planning. The study focused on 5 specific areas in Hamilton County. An epicenter at the point where Interstate 24 crosses Rossville Blvd was established. The study compared student population from the 2001-2002 school year to the 2008-2009 school year. The analysis of the study focuses primarily on the Black, Hispanic, and White populations, which are the major groups in Hamilton County.

Area 1

A circle with a radius of 2.5 miles was established. This circle, as depicted on the accompanying map, included the areas of Clifton Hills, East Lake, St. Elmo, Downtown Chattanooga, and a small section of East Ridge and Brainerd. Students residing in this area have decreased from 5,725 to 5,475, representing a 4.37% decrease. The Black population decreased by 497 students from 4,269 to 3,772. The White population decreased by 250 students from 1,294 to 1,044. The reduction of 747 Black and White students in the area was partially offset by the addition of 504 Hispanic students. It is evident that there is a migration of Black and White students from this area and a steady increase of Hispanic students.

| 2001 Student Data | | | | | | | |
|-------------------|-------|-------|----------|--------|---------|-------|-------|
| Radius | Asian | Black | Hispanic | Indian | Pacific | White | Total |
| 2.5 | 30 | 4269 | 121 | 11 | | 1294 | 5725 |

| 2008 Student Data | | | | | | | |
|-------------------|-------|-------|----------|--------|---------|-------|-------|
| Radius | Asian | Black | Hispanic | Indian | Pacific | White | Total |
| 2.5 | 28 | 3772 | 625 | 4 | 2 | 1044 | 5475 |

Area 2

Area 2 represents the area between 2.5 miles and 5 miles from the epicenter. Communities included are the majority of East Ridge and Brainerd, North Chattanooga, East Chattanooga and Lookout Valley. Students residing in this area have decreased from 8,082 in 2001 to 7,378 in 2008, representing an 8.71% decrease. The Black population decreased by 780 students from 5,149 to 4,369. The White population decreased by 143 students from 2,780 to 2,637. The reduction of 923 students in the Black and White populations was partially offset by an increase of 216 Hispanic students. As with Area 1, it is evident that there is a migration of Black and White students from this area, which is increasingly being filled with Hispanic students. Additionally, it appears that Area 2 is losing students at twice the rate of Area 1.

| 2001 Student Data | | | | | | | |
|-------------------|-------|-------|----------|--------|---------|-------|-------|
| Radius | Asian | Black | Hispanic | Indian | Pacific | White | Total |
| 5.0 | 88 | 5149 | 59 | 6 | | 2780 | 8082 |

| 2008 Student Data | | | | | | | |
|-------------------|-------|-------|----------|--------|---------|-------|-------|
| Radius | Asian | Black | Hispanic | Indian | Pacific | White | Total |
| 5.0 | 88 | 4369 | 275 | 7 | 2 | 2637 | 7378 |

Area 3

Area 3 represents the area between 5 miles and 7.5 miles from the epicenter. Communities included in the area are: Lupton City, Rivermont, part of Red Bank, East Chattanooga, Jersey, Brainerd Hills, and Harris Hills. Students residing in this area have increased by 369 students from 4,340 to 4,709, representing an 8.50% increase. The Black population increased by 402 students from 1,432 to 1,834. The White population decreased by 302 students from 2,705 to 2,403. The Hispanic population increased by 250 students from 89 to 339. It appears that there is a partial migration of Black students from Areas 1 and 2 to Area 3. It is evident that the White population is continuing to migrate away from the central city. As with Area 1 and Area 2, the Hispanic population continues to grow and offset the loss of White students in the area.

| 2001 Student Data | | | | | | | |
|-------------------|-------|-------|----------|--------|---------|-------|-------|
| Radius | Asian | Black | Hispanic | Indian | Pacific | White | Total |
| 7.5 | 106 | 1432 | 89 | 6 | 2 | 2705 | 4340 |

| 2008 Student Data | | | | | | | |
|-------------------|-------|-------|----------|--------|---------|-------|-------|
| Radius | Asian | Black | Hispanic | Indian | Pacific | White | Total |
| 7.5 | 118 | 1834 | 339 | 15 | | 2403 | 4709 |

Area 4

Area 4 represents the area between 7.5 miles and 10 miles from the epicenter. Communities included are portions of Hixson, Signal Mountain, Tyner and East Brainerd. Students residing in the area increased by 517 students from 5,729 to 6,246, representing a 9.02% increase. The Black population increased by 443 students from 1,396 to 1,839. The White population decreased by 261 students from 4,058 to 3,797. The Hispanic population increased by 222 students from 86 to 308. As evidenced by an increase of 443 Black students, it appears that part of the migration from Area 1 and 2 is settling in Area 4. In Area 4 as in Area 1, Area 2, and Area 3, there is a migration of White students. The Hispanic population continues to grow and partially offsets the loss of White students from this area.

| 2001 Student Data | | | | | | | |
|-------------------|-------|-------|----------|--------|---------|-------|-------|
| Radius | Asian | Black | Hispanic | Indian | Pacific | White | Total |
| 10.0 | 164 | 1396 | 86 | 25 | | 4058 | 5729 |

| 2008 Student Data | | | | | | | |
|-------------------|-------|-------|----------|--------|---------|-------|-------|
| Radius | Asian | Black | Hispanic | Indian | Pacific | White | Total |
| 10.0 | 285 | 1839 | 308 | 12 | 5 | 3797 | 6246 |

Area 5

Area 5 represents the area between 10 miles and 15 miles from the epicenter. Communities included are Falling Water, Middle Valley, Harrison, Westview, and portions of Signal Mountain and Ooltewah. Students residing in the area increased by 279 students from 8,817 to 9,096, representing a 3.16% increase. The Black population increased by 420 students from 717 to 1,137. The White population decreased by 488 students from 7,801 to 7,313. The Hispanic population increased by 297 students from 121 to 418. The Black and Hispanic population in this area are growing, while the White population has decreased.

| 2001 Student Data | | | | | | | |
|-------------------|-------|-------|----------|--------|---------|-------|-------|
| Radius | Asian | Black | Hispanic | Indian | Pacific | White | Total |
| 15.0 | 165 | 717 | 121 | 12 | 1 | 7801 | 8817 |

| 2008 Student Data | | | | | | | |
|-------------------|-------|-------|----------|--------|---------|-------|-------|
| Radius | Asian | Black | Hispanic | Indian | Pacific | White | Total |
| 15.0 | 201 | 1137 | 418 | 12 | 15 | 7313 | 9096 |

Area 6

Area 6 represents the area between 15 miles and 20 miles from the epicenter. Communities included are Mowbray Mountain, Daisy, New Salem, Snow Hill, Apison, and portions of Ooltewah. Students residing in the area increased by 396 students from 4,664 to 5,060. The Black population increased by 54 students from 56 to 110. The White population increased by 242 students from 4,552 to 4,794. The Hispanic population increased by 71 from 25 to 96. The Black, Hispanic, and White populations have increased in this area.

| 2001 Student Data | | | | | | | |
|-------------------|-------|-------|----------|--------|---------|-------|-------|
| Radius | Asian | Black | Hispanic | Indian | Pacific | White | Total |
| 20.0 | 21 | 56 | 25 | 10 | | 4552 | 4664 |

| 2008 Student Data | | | | | | | |
|-------------------|-------|-------|----------|--------|---------|-------|-------|
| Radius | Asian | Black | Hispanic | Indian | Pacific | White | Total |
| 20.0 | 47 | 110 | 96 | 11 | 2 | 4794 | 5060 |

Summary

Areas 1 and 2 are the only areas experiencing declining growth. 1,257 Black students and 393 White students have collectively left this area. The Black population appears to be migrating from Area 1 and Area 2 into Area 3, Area 4, and Area 5, on an almost equal basis. The White population shows decreases in Area 1, Area 2, Area 3, Area 4, and Area 5 of 1,444 students. The increase in Area 6 is only 242 students, which leaves 1,202 students unaccounted for. The White population in Hamilton County Schools has decreased 1,874 students from 2001 to 2008, indicating a loss to private schools, an increase in home schooling and/or a migration to neighboring counties. The Hispanic population is burgeoning in all areas with an overall growth rate in the last 7 years of 311.38% in the areas studied. The scope of this study does not seek to ascertain reasons for migration.

| Total Enrollment | | | | | | | |
|------------------|-------|-------|----------|--------|---------|-------|-------|
| Year | Asian | Black | Hispanic | Indian | Pacific | White | Total |
| 2001 | 583 | 13723 | 668 | 60 | 6 | 26025 | 41065 |
| 2008 | 770 | 13329 | 2099 | 68 | 29 | 24151 | 40446 |