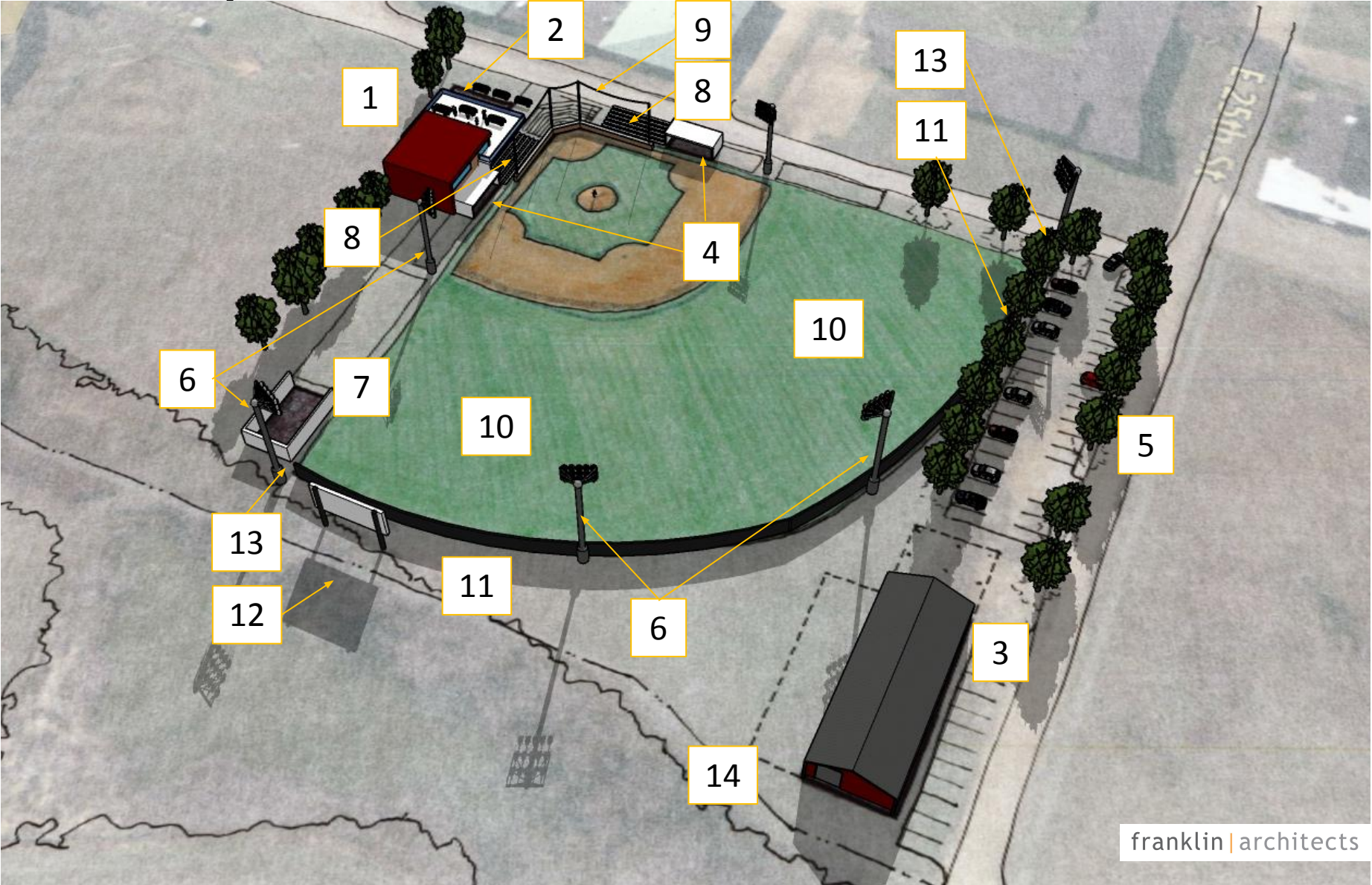


Baseball Field Masterplan

Howard High School



Masterplan



- 1. Concessions Stand
- 2. Sky Box
- 3. Training Facility
- 4. Dugouts
- 5. Parking Expansion
- 6. Lighting Upgrades
- 7. Bullpen
- 8. Bleachers
- 9. Backdrop Net
- 10. Irrigation
- 11. Outfield Fence
- 12. Scoreboard
- 13. Foul Poles
- 14. Potential Footprint Expansion for Training Facility

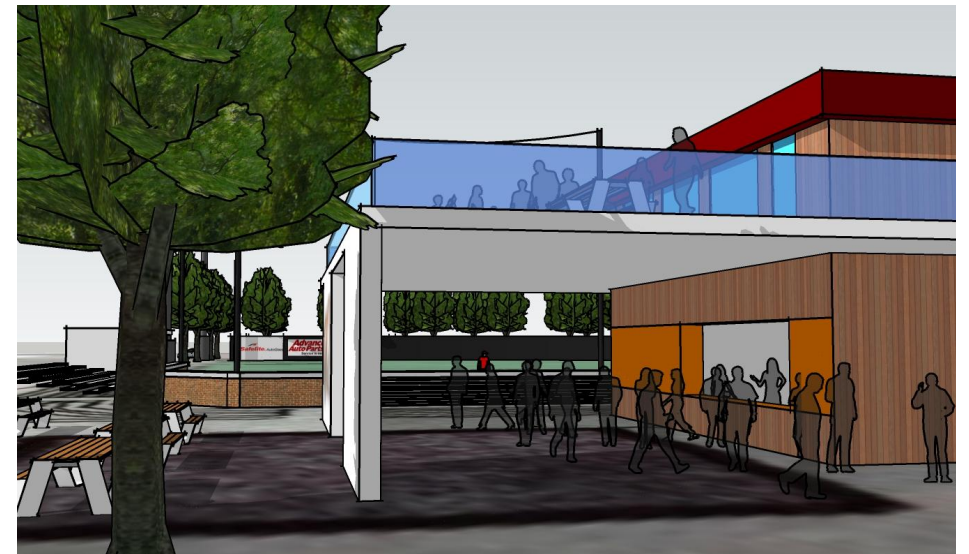
Concessions and Skybox



Concession stand and sponsored skybox

2 levels
1,000 sf per level

Budget Est.: \$175 psf



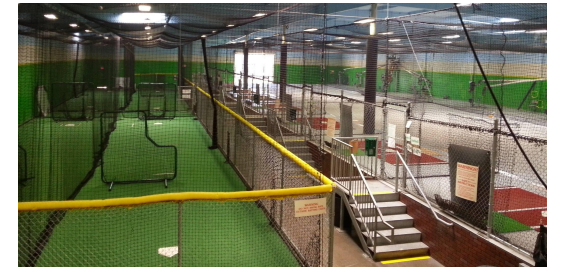
Batting Facility



Indoor batting facility
w/options for expansion

1 level
4,300 sf

Budget Est.: \$150 psf
\$645,000.00 Building Cost



Dugouts + Bleachers



Dugouts, bleachers, brick and net backstop

1 level

2 dugouts

6 rows of bleachers @
approx. 160 lf

Budget Est.: \$???



New Parking Area



30 new parking spaces

New Advertising Opportunities

